

16 Inch DC Motor Pedestal Fan White



DFI670

Batch code:

Please read these instructions carefully before use and retain for future reference

**Before switching on your appliance,
always check for any damage which may have been caused in transit**

CONTENTS

Important Safety Instructions.....	3-4
Specification	5
Assembly Instructions.....	6-7
Operating Instructions.....	8-9
Cleaning and Maintenance	10
Fuse Replacement.....	10
Trouble Shooting Guide.....	11
Disposal Information.....	11
Igenix Warranty Terms and Conditions.....	12-13

IMPORTANT SAFETY INSTRUCTIONS

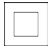
Read and follow all of the instructions even if you feel you are familiar with the product, and find a place to keep this manual handy for future reference.

Important: This appliance is intended for use in a domestic environment only. Any other use is not recommended by the manufacturer and may cause fire, electrical shocks or other injury to user or property. When using electrical appliances, basic safety precautions should always be followed:

- Before plugging in the appliance, check that the voltage indicated on the rating label corresponds with the main voltage in your home.
- Do not operate the unit with a damaged cord or plug, after it malfunctions or has been dropped or damaged in any way. Return to an authorised service facility for examination and repair.
- Ensure that the air inlets and outlets are not blocked or covered.
- Do not place the unit too close to curtains or other objects - min 30cm.
- Make sure there are no objects near the unit which can prevent it from oscillating.
- Never insert fingers, pencils or other objects into the unit, and especially not during the operation. Warn your children against these dangers.
- This appliance must not be used by children.
- Cleaning and user maintenance shall not be made by children.
- Keep the appliance and its cord out of reach of children.
- Children shall not play with the appliance.
- Appliances cannot be used by persons with reduced physical, sensory or mental capabilities or lack of experience and knowledge.
- Unplug the unit from the socket when not in use. Do not pull on the cord.

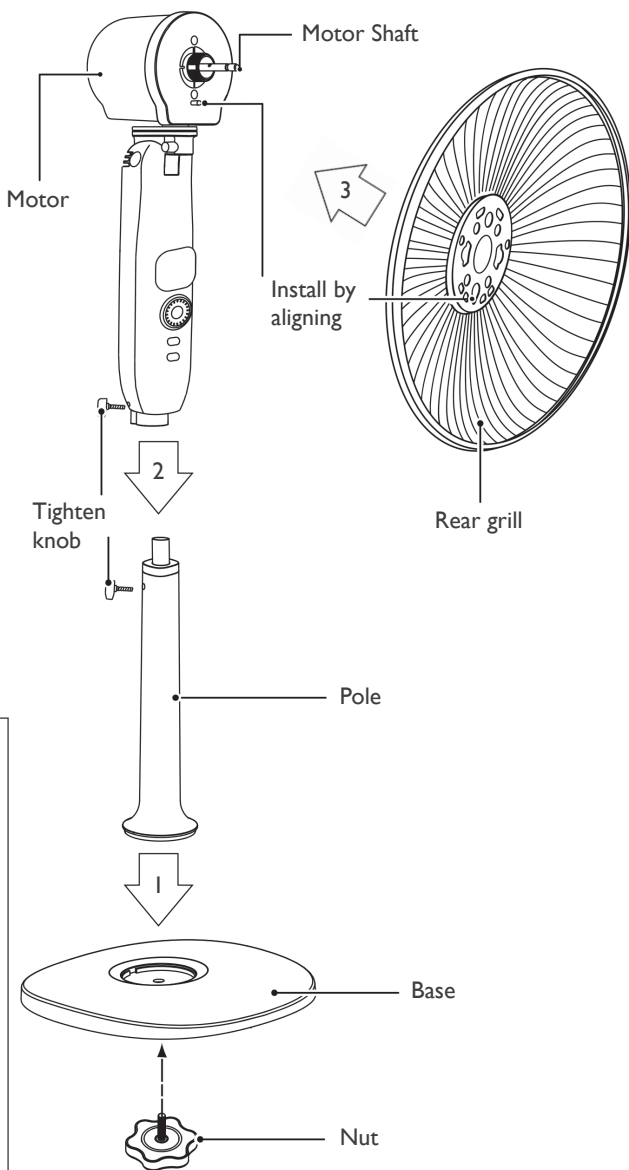
- Do not use the unit near a bath, shower, swimming pool or anywhere it could be splashed with water.
- Do not expose the unit to direct sunlight.
- Do not immerse the appliance or the electrical cord or plug in any type of liquid.
- Do not use the appliance near a source of heat.
- Do not use the unit near flammable or explosive gases.
- Before cleaning the unit, switch it off and unplug the power cord.
- Do not leave the unit unattended during operation. Always unplug the power cord when not in use.
- To repair the unit, take it to a qualified service engineer. Repairs carried out by unqualified people may cause damage to the unit or injury to persons or property and void the warranty.

SPECIFICATION

Model No:	DFI 670
Brand	Igenix
Colour	White
Wattage (W)	25 W
Frequency (Hz)	50 Hz
Voltage (V)	220-240 V
Product Dimensions (mm)	H 1360 x W 400 x D 452 mm
Net Weight (kg)	7.6 kg
Oscillation Function	Yes
Class	II 
Speeds	12 Speeds

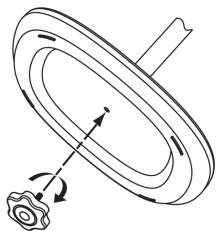
ASSEMBLY INSTRUCTIONS

IMPORTANT: Remove parts from each separate component before performing installation.



Base Installation

Align the column with the groove on the base and fix using the Base Nut:

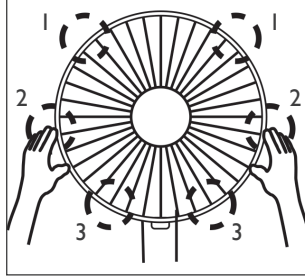


Front and Rear Guard Installation

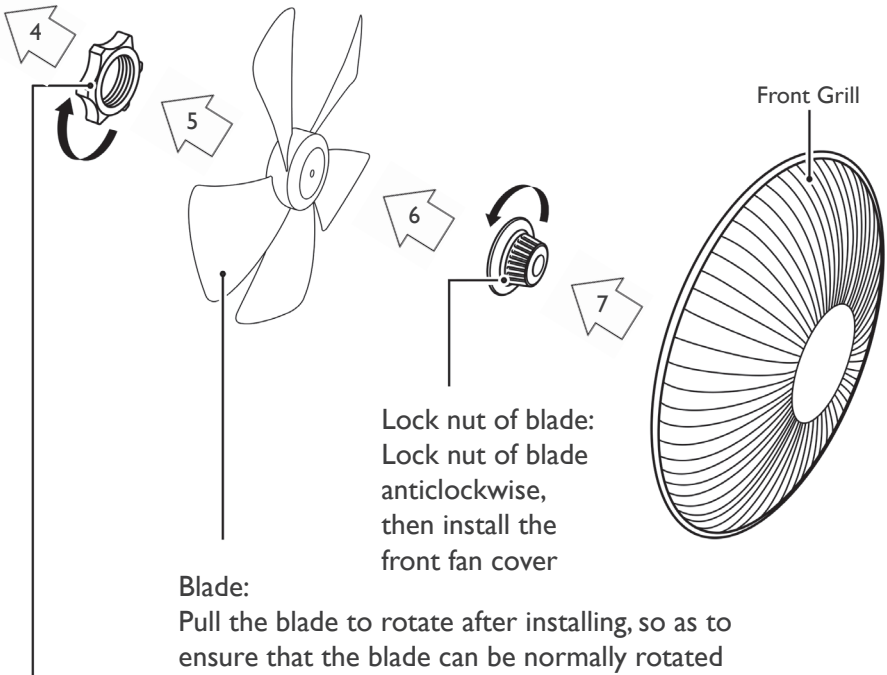
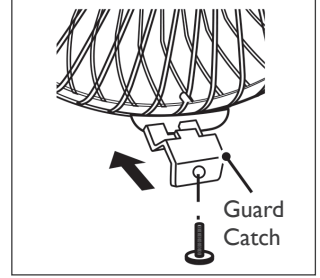
1. Align catch of the Front Guard with the illustrated position of the Rear Guard



2. Press guards sequentially with both hands



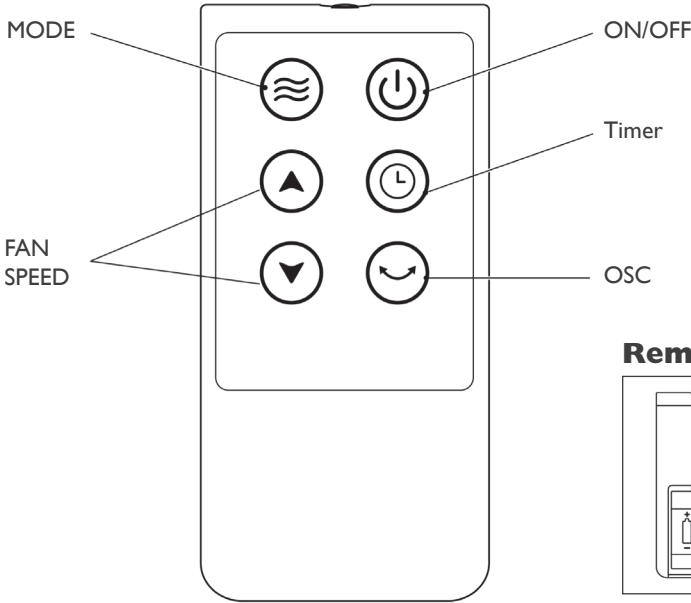
3. Self-Catch installation



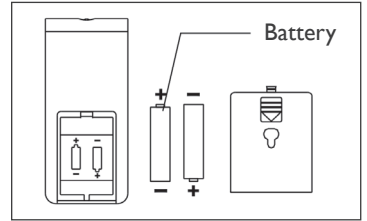
Lock nut of grill:
Screw the lock nut of grill clockwise, and ensure the rear grill is kept in place

OPERATING INSTRUCTIONS

Remote Control

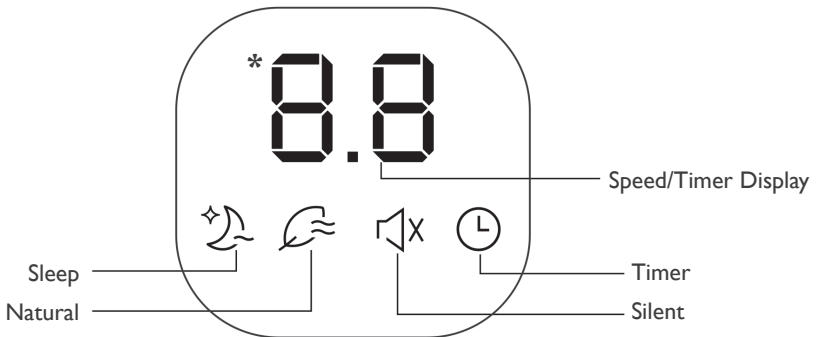


Remote Batteries



IMPORTANT: Effective range of remote control: within 5m distance and 30 degree angle from front of product.

Display * Note: Display will dim and not show LED after 30 seconds



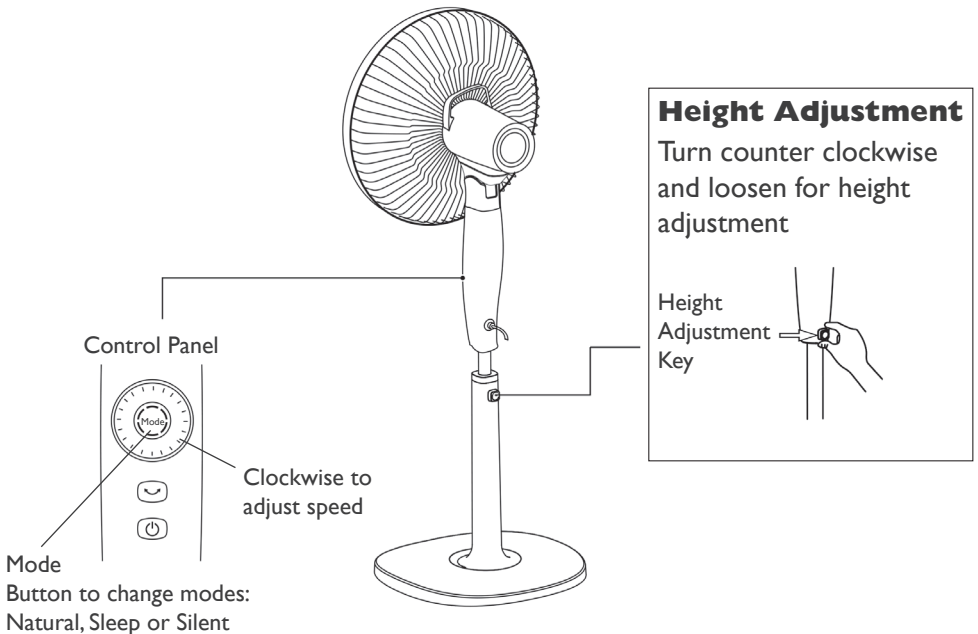
Functions

Natural - The wind will simulate the natural winds found outdoors and offer a unique natural wind setting.

Sleep - The wind will be slumberous. You can chose this mode when you sleep.

Silent - Speed to 0 - very light breeze, no noise.

Instructions for Adjustment



CLEANING AND MAINTENANCE

- Turn off the fan and remove the plug from the power supply before cleaning.
- Use a dry, soft cloth to remove any dust from the fan.
- If the fan is particularly dirty, use a soft damp cloth and wipe dry.
- Do not use any chemicals or detergents as they will damage the fan.
- It is recommended to cover the fan with a plastic bag before storage to prevent dust collecting on fan blades.
- Store the fan in a ventilated and dry area.
- Do not allow water to get inside the body of the fan.

MAINS PLUG FUSE REPLACEMENT

Fuse Replacement (Class II)

Remove the fuse cover with a small flat head screw driver. Take out the fuse and replace with a new fuse of the same Amp. Replace the fuse cover and push back into place.



TROUBLE SHOOTING GUIDE

If you experience difficulties with the appliance, please check the suggestions below before contacting customer services on 01473 271272:

Problem	Possible Cause	Possible Solution
The appliance does not work.	The appliance is not properly plugged into the wall socket.	Plug the appliance in firmly.
	The appliance is not switched on.	Make sure the appliance is switched on.
	There is no electricity running through the mains wall socket.	Check the fuse or breaker.

DISPOSAL INFORMATION

The European Directive 2012/19/EU on Waste Electrical and Electronic Equipment (WEEE), requires that old household electrical appliances must not be disposed of in normal unsorted municipal waste.

Old appliances must be collected separately in order to optimise the recovery and recycling of the materials they contain and reduce the impact on human health and the environment.

The crossed out “wheeled bin” symbol on the product reminds you of your obligation, that when you dispose of the appliance it must be separately collected. Consumers should contact their local authority or retailer for information concerning the correct disposal of their old appliance.





Igenix Warranty Terms & Conditions

This product is guaranteed for a period of 12 months as standard from the date of purchase against mechanical and electrical defects. You can extend your warranty for a further 12 months by registering your product.

Upon registration we will cover your product for a period of 24 months from the original purchase date against any mechanical or electrical defects.

To qualify for the guarantee, the product must be used for domestic household use only and in accordance with the instructions in the user manual. Any misuse of the product will result in the warranty being void.

The guarantee does not cover accidental damage, misuse, neglect, tampering or incorrect adjustment or installation.

The guarantee will be rendered invalid if the product is resold, has had its serial number removed (or has an invalid serial number), or if an unauthorised person has carried out any repairs or alterations.

The warranty does not cover accessories or consumable parts that require replacement under normal use. This includes shelving, dials, filters, belts and trays etc.

In the unlikely event of a breakdown please refer to the Troubleshooting guide in your user manual and check all plugs, fuses and the electricity supply.

If you still require assistance please contact our Customer Service department on **01473 271 272** or write to us at the following address:

**Customer Service Department
38 Bluestem Road, Ransomes Europark
Ipswich, IP3 9RR**

Please quote the Product Code which begins 'IG' or 'DF' and the Batch Code on the front of the instruction manual, and give details of the exact fault. We will then decide whether to repair or replace the item.

Before we arrange the repair or replacement you will be required to return a copy of your proof of purchase. Please retain your original.

If an item is replaced within the agreed guarantee period, the guarantee for the replacement item will be calculated from the purchase date of the original.

In the event that the product is inspected and no fault is found or the product is not within the guarantee period you will be charged for the repair and any carriage costs.



Thank you for choosing Igenix

As a valued customer we would like to offer you a FREE 2 year warranty to cover your product against any electrical or mechanical defects.

This means that in the unlikely event you develop a fault or problem with your product we will happily repair or replace the item free of charge.

To qualify for the 2 year warranty you must register your product within 30 days of purchase. The full Terms & Conditions of our warranty policy are shown on the opposite page. They are also available on our website. **www.igenix.co.uk**

igenix

38 Bluestem Road, Ransomes Europark, Ipswich, IP3 9RR

Tel. 01473 271 272

Disclaimer: Igenix operate a policy of continual improvement and development.
We therefore reserve the right to change/alter the specification and appearance of our appliances without prior notice.
All diagrams and images shown in this manual are for illustration purposes only.