

Product Data Sheet for KLEENEX® ULTRA Hand Towels - Interfolded / White /Medium - 6778

Product Information

Product Long Code 06778000
Customer Facing Code 6778
Description KLEENEX® ULTRA Hand Towels - Interfolded / White /Medium
PDS Reference 28/09/2018



Packaging Configuration

Case Contents 15 Clips x 124 Sheets = 1860 Sheets
Outer Pack Material Paper

Icon	Unit	Dimension				Weight(kg)		
	Clip	21.50	x	10.60	x	13.00	Length x Width x Height(cm)	0.32
	Sheet	31.50	x	21.50			Length x Width(cm)	

Product Description

KLEENEX® Ultra Super Soft Hand Towels are softer, more absorbent and Stronger than conventional towels, adding a touch of luxury to food contact areas and office and hotel washrooms with a high-quality image. The unique Airflex technology ensures that each towel is Ultra absorbent and Strong, even when wet, preventing them from becoming soggy or ripping. The clever, interfolded design helps to prevent towels from ripping when being pulled from the dispenser, and ensures only single towels are dispensed each time, reducing mess and wastage. KLEENEX® Ultra Super Soft Hand Towels are FSC certified, giving assurance that they are made from or contain wood that comes from FSC certified forests. These forests are managed to meet the social, economic and ecological needs of present and future generations. Individual sheet size 31.5cm (L) x 21.5cm (W). Compatible with AQUARIUS* Folded Hand Towel Dispensers (product code 6945, 6956 and 7171) and Kimberly-Clark Professional* Folded Hand Towel Dispensers (product codes 8971 and 9962). 15 packs x 124 white, 2 ply sheets (1,860 total)

Product Features

- 15 packs x 124 white, 2 ply sheets (1,860 total)
- FSC Certified
- Soft, Strong and absorbent hand towels that provide a quality feel whenever used
- Interfolded hand towels that dispense one at a time, reducing waste and keeping refill frequency and costs to a minimum
- Compatible with AQUARIUS* Folded Hand Towel Dispensers (product code 6945, 6956 and 7171) and Kimberly-Clark Professional* Folded Hand Towel Dispensers (product codes 8971 and 9962).
- Made using unique Airflex™ Technology. Soft, Strong & highly absorbent, even when wet.
- Ideal for adding a touch of luxury to food contact areas and office and hotel washrooms with a high-quality image.

Product Data Sheet for KLEENEX® ULTRA Hand Towels - Interfolded / White /Medium - 6778

Product Specifications

Fold Type	I	Virgin Fibre(%)	76
Bleaching Method	Elemental Chlorine Free (ECF)	Embossing/textured	No
Technology	Uncreped Through Air Dried (UCTAD)	Plies	2
Bar Code (Case)	05027375040924	Recycled Fibre(%)	24
Colour	White		

Product Data Sheet for KLEENEX® ULTRA Hand Towels - Interfolded / White /Medium - 6778

International Standards and Symbols

Marketing

Healthy Workplace Project

EMPLOYEE : * Health and Wellbeing of the individual * Improved hygiene facilities * Improved awareness of benefits of good hygiene * Being cared for by their employer * Reduction of illness at work and home
EMPLOYER : * THE HEALTHY WORKPLACE PROJECT*, creating a healthier and more engaged workforce * Reduced sickness helps lower absenteeism * Engaged employees are more likely to "go the extra mile"

Standard R+E

Food Contact Regulations

This product is suitable for food contact and complies with Regulation (EC) No. 1935/2004. Furthermore, nitrile rubber gloves comply with Regulation (EC) No. 10/2011 and German Recommendation, BfR No. XXI, and paper products comply with German Recommendation, BfR No. XXXVI.

AIRFLEX* Technology

AIRFLEX*

Compression

KIMBERLY-CLARK PROFESSIONAL* is using new air compression technology to fit up to 18% more paper hand towels into each case, resulting in a range of commercial and environmental benefits. The technology is being applied across a range of KLEENEX and SCOTT Hand Towels manufactured using AIRFLEX* Fabric. Compressed AIRFLEX* Fabric towels will continue to offer superior absorbency and strength and outstanding levels of hygiene and comfort. Along with the following additional benefits: Environmental, it means more towels per truck so fewer trucks on the road. Packaging waste is also reduced. End-users will now need to use less warehouse storage space for the same amount of hand towels, while more towels in each sleeve will mean fewer refills are required.

Trade

FSC F1 Mixed F2 Recycled F3 Pure

Forest Stewardship Council - Products carrying the Forest Stewardship Council (FSC) label are independently certified, giving assurance they come from forests that are managed to meet the social, economic and ecological needs of present and future generations. This product is FSC Certified - giving you the assurance that it is made from or contains wood that comes from FSC certified forests.

ISO 14001

ISO 14001 is an international environmental standard. Designed to help organisations ensure that operations comply with environmental laws, and; major environmental risks and liabilities are properly identified, minimised and managed.

ISO 9001

This gives the requirements for quality management systems, is now firmly established as the globally implemented standard for providing assurance about the ability to satisfy quality requirements and to enhance customer satisfaction in supplier-customer relationships.

Product Data Sheet for KLEENEX® ULTRA Hand Towels - Interfolded / White /Medium - 6778

Packaging

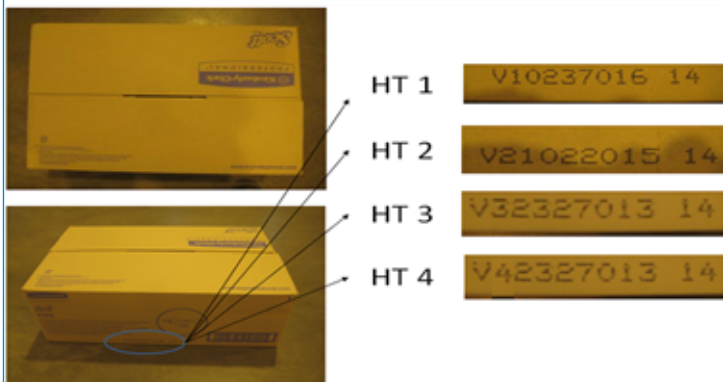
Unit Of Sale	Case	Net Weight(kg)	4.755
Max Weight(kg)	5.85	Case Dimension (LXWXH)(cm)	55.4 x 39.5 x 21.6
Inner Pack Material	Paper	Full Pallet	Yes

Pallet Type	LxWxH (m)	Cases per Layer	Layers per Pallet	Cases per Pallet
A2	1.20 x 1.00 x 1.23	5	5	25

Related Products

Product Code	Description	Recommendation
	Fits Dispenser	
6945	AQUARIUS* Folded Hand Towel Dispenser - Interleaved / White	✓
6956	AQUARIUS* Folded Hand Towel Dispenser - Multifold / White /Small	
7171	AQUARIUS* Folded Hand Towel Dispenser - Interleaved / Black	
9962	KIMBERLY-CLARK PROFESSIONAL* Folded Hand Towel Dispenser - Interleaved / White	
8971	KIMBERLY-CLARK PROFESSIONAL* Hand Towel Dispenser - Stainless steel	

Batch Code



Information

It is the employer's responsibility to assess the risk of the task to be undertaken and determine the correct choice of wipers for the task. The manufacturer, Kimberly-Clark, does not accept any responsibility for the incorrect choice or misuse of wipers shown in this brochure. All care has been taken to ensure that the information contained herein is as accurate as possible at the time of publication, however errors may occur and legislation concerning personal protective equipment is under constant review and may change in the lifetime of this brochure. Accordingly, the specifications for the products may be subject to change. We would advise you to contact INFOFAX if you have any queries concerning the products shown or the suitability of such products for the particular task. Always dispose of used protective equipment in a safe and appropriate manner in accordance with European, National and Local environmental regulations

Infofax Details	infofax@kcc.com	Websites	www.kcprofessional.co.uk
Customer Service Number	For more information please contact Customer Service during regular office hours-0870 551 044		
Country of Origin	FRANCE		