

# Filing Cabinet - BS & Double Filing Cabinets



First choice for workplace storage

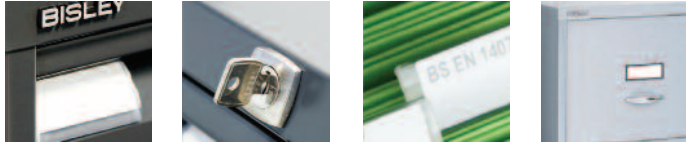
Version.2 - Nov 2010

**BISLEY**

# Filing Cabinet - BS Filing



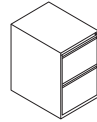
Bisley filing cabinets are built to last featuring a one-piece carcass, fully welded construction and double skin drawer fronts. Drawers are mounted on roller bearing slides with a positive closing device, providing ultra-smooth action and full extension for access to the whole drawer. The range includes five, four, three and two drawer versions for foolscap or A4 filing.



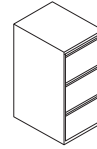
1. easy print labels and holder, flush front 2. mastered lock, 200 differs 3. approved to BS EN 14073: pts 2+3 & BS EN 14074 4. classic front

## BS flush front filing cabinets

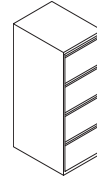
foolscap/A4



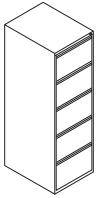
1623/3623



1633/3633



1643/3643




1653

foolscap	description	height <sup>†</sup>	width <sup>†</sup>	depth <sup>†</sup>
1623	(BS2E) 2 drawer cabinet	711	470	622
1633	(BS3E) 3 drawer cabinet	1016	470	622
1643	(BS4E) 4 drawer cabinet	1321	470	622
1653	(BS5E) 5 drawer cabinet	1511	470	622

A4	description	height <sup>†</sup>	width <sup>†</sup>	depth <sup>†</sup>
3623	(A4BS2E) 2 drawer cabinet	711	413	622
3633	(A4BS3E) 3 drawer cabinet	1016	413	622
3643	(A4BS4E) 4 drawer cabinet	1321	413	622

<sup>†</sup> measurements in millimetres

 **standard / trade colour palette**

	silver
	goose grey
	light grey
	beige
	cream
	coffee
	edinburgh
	black
	pink*
	light red orange*
	yellow*
	green*
	blue*
	oxford blue*
	graphite*
	white*
	coffee/cream duo

Colour blocks are only approximations, please refer to Bisley metal colour samples for an exact representation.  
\*surcharge applies

## BS Filing Cabinets

### Benefits & Features

- 100% extension drawers (0.56m linear capacity)
- fully welded carcass without bolts or rivets for greater strength and cleaner line
- backs and sides are pierced to enable units to be bolted together
- filing cabinets can be fitted with compressor plates
- internal drawer dimensions:

foolscap	258(h) x 385(w) x 555(d) max loading 36 Kg
foolscap 5 drawer	240(h) x 385(w) x 555(d) max loading 33.25 Kg
A4 drawer	255(h) x 330(w) x 555(d) max loading 31 Kg

### Options

- classic or flush front
- If you want the file bar factory fitted, add "A" at the end of the part code for A4 ex. 1643A or D for Dutch folio ex. 1643D
- same lock number on multiple units - add letter 'X' at the end of the part code
- security locking bar available
- easy print label holders

### Technical Information

<b>Price Group:</b>	36
<b>Made at:</b>	Bisley, Surrey
<b>Finishes:</b>	smooth wet paint
<b>Guarantee:</b>	7 years
<b>Slide Type:</b>	tbc
<b>Key info:</b>	AA series, 500 differs, AA500-AA999, mastered

#### Quality Accreditation:

BS EN 14073 2004 Part 2 & 3, BS EN 14074, BS 4875 1998 Part 7 level 4 & Part 8, BS 5459 1983 Part 3, DIN 4554/485, ANSI/BIFMA X5.2, 5.3 & 5.5, 1997/98, level 5.3

NB: Drawers tested to BS4875, Part 7, Table 3 Test Level 4, 80,000 cycles

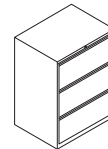
# Filing Cabinet - Double Filer



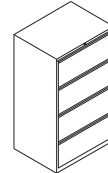
## A4 double filer



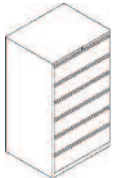
DF2



DF3



DF4

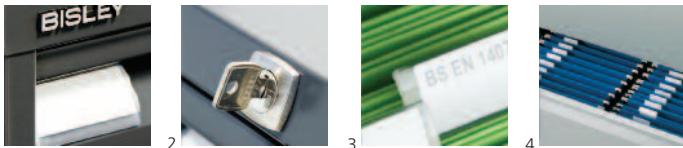


DF6

item	description	height <sup>†</sup>	width <sup>†</sup>	depth <sup>†</sup>
DF2	2 drawer (complete with cross rails and file bars)	713	800	622
DF3	3 drawer (complete with cross rails and file bars)	1017	800	622
DF4	4 drawer (complete with cross rails and file bars)	1321	800	622
DF6*	6 drawer (complete with compressor plates)	1321	800	622


CPDFP10 Compressor plates for DF6 pack of 10

\* used for card and media storage, each drawer is sub divided to accommodate 3 rows (215mm wide) of cards.



1. easy print labels and holder 2. mastered lock, 200 differs 3. approved to BS EN 14073: pts 2+3 & BS EN 14074 4. two rows of A4 suspension files in double filer

<sup>†</sup> measurements in millimetres

 standard / trade colour palette

	silver
	goose grey
	light grey
	beige
	cream
	coffee
	edinburgh
	black
	pink*
	light red orange*
	yellow*
	green*
	blue*
	oxford blue*
	graphite*
	white*
	coffee/cream duo

Colour blocks are only approximations, please refer to Bisley metal colour samples for an exact representation.  
\*surcharge applies

## A4 Double Filer

### Benefits & Features

- each drawer will accommodate 2 x rows of A4 files front to back.
- 100% extension drawers (0.56m linear capacity)
- fully welded carcass without bolts or rivets for greater strength and cleaner line
- backs and sides are pierced to enable units to be bolted together
- filing cabinets can be fitted with compressor plates
- internal drawer dimensions:

DF2 DF3 DF4	275(h) x 720(w) x 563(d) max loading 60 Kg.
DF6	184(h) x 691(w) x 560(d) max loading 43.3kg

### Options

- If you wish to use American letter filing please add letter "AL" at the end of the part code to include the filing bar (Factory fitted)
- same lock number - add letter 'X' at the end of the part code

### Technical Information

<b>Product Group:</b>	33
<b>Made at:</b>	Bisley, Newport, South Wales
<b>Finishes:</b>	smooth powder paint
<b>Guarantee:</b>	5 years
<b>Slide Type:</b>	tbc
<b>Key info:</b>	92 series, 200 differs, 92201-92400, mastered

#### Quality Accreditation:

BS EN 14073 2004 Part 2 & 3, BS EN 14074, BS 4875 1998 Part 7 level 4 & Part 8, BS 5459 1983 Part 3, DIN 4554/485

#### Head Office, Sales & Production

F C Brown (Steel Equipment) Ltd  
Bisley Office Furniture  
Queens Road  
Bisley, Surrey  
GU24 9BJ  
Tel: +44 (0)1483 485 600  
Fax: +44 (0)1483 489 962  
info@bisley.com

#### Showroom

Bisley Office Furniture  
Northumberland House  
155-157 Great Portland Street  
London  
W1W 6QP  
Tel: +44 (0)20 7436 7111  
Fax: +44 (0)20 7436 8111  
info@bisley.com

#### Design & Production

Bisley Office Furniture  
Caswell Way  
Reevesland Ind Est  
Newport, South Wales  
NP19 4PW  
Tel: +44 (0)1633 637 383  
Fax: +44 (0)1633 637 384  
info@bisley.com

#### Bisley France

6 bis, rue Georges Chapelier  
78150 Le Chesnay  
France

Tel: +33 (0)1 39 54 39 58  
Fax: +33 (0)1 39 55 98 03  
info@bisley.fr

#### Bisley GmbH

Wiesenstrasse 70  
40549 Düsseldorf  
Germany

Tel: +49 211 87 541 600  
Fax: +49 211 87 541 899  
info@bisley.de

#### Bisley B.V.

Vollerstraat 2  
5051 JV GOIRLE  
Holland

Tel: +31 13 46 30 662  
Fax: +31 13 46 39 615  
info@bisley.nl

#### Bisley Ireland

36 Beechwood Close  
Bray, Co. Wicklow  
Ireland

Tel: +353 (0)1 276 9100  
Fax: +353 (0)1 276 9101  
info@bisley.ie

#### Bisley Spain

Pol. Ind. Bakiola Pab. 6  
48498 Arrankudiaga (Vizcaya)  
Spain

T +34 94 633 32 00  
F +34 94 633 32 33  
info@bisley.es

[www.bisley.com](http://www.bisley.com)

