

**PRODUCT SHORT DESCRIPTION:**

Earth Lacquered Steel Aluminium Frame

**FEATURES AND BENEFITS:**

- Best performance dry erase surface ideal for normal use
- Excellent value balanced on quality and price
- Aluminium pen tray and wall fastening kit included
- Vertical or horizontal mounting
- 10 year warranty on board surface
- C2C Certified

**PRODUCT IMAGE:**



**MARKETING COPY:**

Giving preference to recycled and recyclable materials in its manufacture, Bi-Office Earth! products combine fine quality with a responsive approach on the environmental issues our planet is now facing. In our pursuit for excellence we match our office and communication solutions with the highest standards in sustainable development.

Answering to the contemporary need of finding sustainable options for the continued development of our consumer needs, Bi-Office products are offered in ecologically concerned formats. Our Earth! presentation boards provide our customers with the best performance and professional quality, from recycled and recyclable materials.

**APPLICATION AND SALES PROPOSITION:**

- Environmentally responsible and friendly solution
- Same sturdiness and resilience as similar standard product

**TARGET MARKET:**

CHANNEL: Office products wholesalers, office products stores, decoration products wholesalers, decoration stores and other retailers

END USERS: conference centers, hotels, companies and organizations in general

**ADDITIONAL NOTES:**

Other information supports: our official websites, Youtube®, Facebook®, catalogue and online catalogue, demo videos and more.

**PROMOTIONAL TIPS:**

No specific timing, thus we recommend the occasional promotion like product and offering of cleaning kits or markers

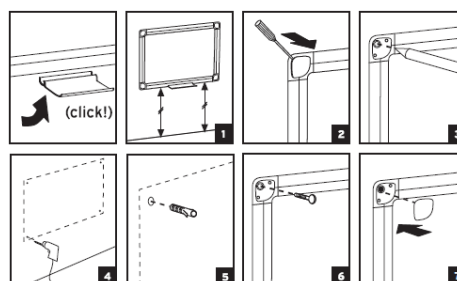
**RANGING TABLE:**

Frame/Colour:	Surface/Colour:	Product Size:	Packed mm	N.W. kg	G.W. kg	Reference:	RRP:
Grey Aluminium	Lacquered steel	600x450	720x470x22	1,89	2,45	MA0207790	---
Grey Aluminium	Lacquered steel	900x600	1030x620x25	3,61	4,60	MA0307790	---
Grey Aluminium	Lacquered steel	1200x900	1330x920x25	6,96	8,81	MA0507790	---
Grey Aluminium	Lacquered steel	1200x1200	1330x1260x25	7,33	9,79	MA3807790	---
Grey Aluminium	Lacquered steel	1500x1000	1650x1050x25	7,64	10,12	MA1507790	---
Grey Aluminium	Lacquered steel	1500x1200	1650x1260x25	9,07	12,05	MA1207790	---
Grey Aluminium	Lacquered steel	1800x900	2000x940x25	8,25	10,87	MA0707790	---

Grey Aluminium	Lacquered steel	1800x1200	2000x1260x25	13,56	17,05	MA2707790	---
Grey Aluminium	Lacquered steel	2000x1000	2200x1050x25	10,08	13,28	MA2207790	---
Grey Aluminium	Lacquered steel	2000x1200	2200x1260x25	11,00	14,30	MA2807790	---
Grey Aluminium	Lacquered steel	2400x1200	2590x1260x25	17,96	22,47	MA2107790	---

**TECHNICAL DETAILS****COMPOSITION:**

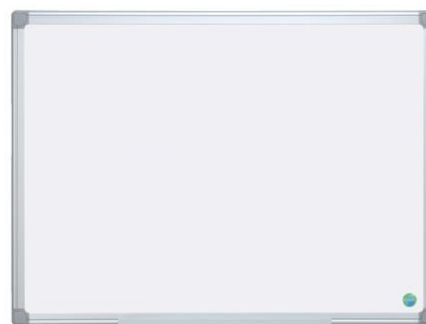
- Aluminum frame
- 10 year warranty on board surface

**ASSEMBLY OVERVIEW:****CERTIFICATION AND LEGISLATION:**

C2C Certification

**ILLUSTRATION:****SUGGESTED ADVERT:****Earth Lacquered Steel Whiteboard****Earth Lacquered Steel Aluminium Frame**

- Best performance dry erase surface ideal for normal use
- Excellent value balanced on quality and price
- Aluminium pen tray and wall fastening kit included
- Vertical or horizontal mounting
- 10 year warranty on board surface
- C2C Certified



**WITHIN FAMILY:**

- Earth ceramic whiteboard
- Earth non-magnetic whiteboard
- Earth Trio Maya whiteboard

**QR CODE:**

**Author:** Daniela González

**Approval:**

**Revision:** 04

**Date:** 28-09-2022