

Nescafé Coffeemate Coffee Whitener 2.5kg



EAN

5011546474892

Target market(s)

GB, IE

Components

Ingredients

Glucose Syrup

Palm Oil

Milk Proteins

Stabilisers (E331, E452)

Acidity Regulator (E340)

Emulsifiers (E471, E472e)

Anti-Caking Agent (E170)

Colour: Riboflavin

Nutrition

	Per 100g	Per 100ml**	Per mug**	%RI*
Energy	2281 kJ	77 kJ	156 kJ	
	547 kcal	19 kcal	37 kcal	2%
Fat	34.4g	1.1g	2.2g	3%
of which: saturates	25.9g	0.8g	1.7g	9%
Carbohydrate	56.7g	1.9g	3.7g	1%
of which: sugars	11.9g	0.4g	0.8g	<1%
Fibre	0.0g	0.3g	0.6g	-
Protein	2.2g	0.1g	0.3g	<1%
Salt	1.00g	0.03g	0.07g	1%

*Reference Intake of an average adult (8400kJ/2000 kçal)

**One mug (2 heaped tsp (6.5g) Nestle® Coffee-Mate® + 1 tsp (1.8g) soluble coffee + 200ml water); used as basis for per 100ml

Makes 384 mugs

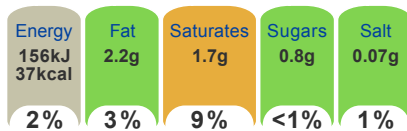
Calculated Nutrition

	per 100g	Per 100ml
Energy (kJ)	2281	77
Energy (kcal)	547	19
Fat (g)	34.4	1.1
of which saturates (g)	25.9	0.8
Carbohydrate (g)	56.7	1.9
of which sugars (g)	11.9	0.4
Fibre (g)	0	0.3
Protein (g)	2.2	0.1
Salt (g)	1	0.03

Front of Pack Nutrition

Per Portion

Each mug** contains:



Of an adult's Reference Intake (RI)*

Energy per 100ml**: 77kJ/19 kcal

*Reference Intake of an average adult (8400kJ/2000 kcal)

Product Description

Brand

Coffee Mate

Manufacturer Brand

Brand - Nestlé

Features

For creamier tasting coffee
No hydrogenated vegetable oil
Suitable for vegetarians

Standardised Brand

Brand - Coffee Mate

Regulated Product Name

Whitener for hot beverages

Marketing

Company Address

PO Box 207,
York,
YO91 1XY,
UK.

Product Marketing

Professional advice
Coffee-mate keeps your coffee hotter for longer so you can savour the delicious taste.

Brand Marketing

Coffee-Mate
Brought to you by the makers of Nescafé coffee.
We love the great flavour and inviting aroma of coffee as much as you do.
That's why we have specially tailored our recipe to enhance your everyday coffee moments, making every sip smoother and silkier.

Trademark Information

Nutritional Compass®
©Reg. Trademark of Société des Produits Nestlé S.A.

Health & Lifestyle

Lifestyle

- Suitable for Vegetarians

Allergy Advice

Milk - Contains

Storage & Usage

Storage Type

Type

Ambient

Preparation and Usage

- 1 Add two heaped teaspoons of Coffee-Mate® to hot black coffee, stir...
- 2 ..and enjoy its smooth, silky taste

Storage

Store in a cool, dry place

Brandbank Captured Pack Data

Pack Size

2.5kg e

Numeric Size

Numeric Size - 2.5

Pack Type

Type - Bag - Plastic

Usage Count

Number of uses - Servings

384

Usage Other Text

Approx. 384 servings

Customer Services

Manufacturers Address

PO Box 207,
York,
YO91 1XY,
UK.

Return To

Contact our professionals
Tel. 0800 745 845 (UK)
00800 6378 5385 (ROI)
PO Box 207,
York,
YO91 1XY,
UK.
www.nestleprofessional.co.uk

Telephone Helpline

0800 745 845 (UK)
00800 6378 5385 (ROI)

Web Address

www.nestleprofessional.co.uk

Extended Data

Languages On Pack

- English

Description Breakdown

Functional Name - Coffee Whitener