

Business or pleasure.
Works both ways.

Executive Desk

Clifton Place Collection | **Model 5421113**

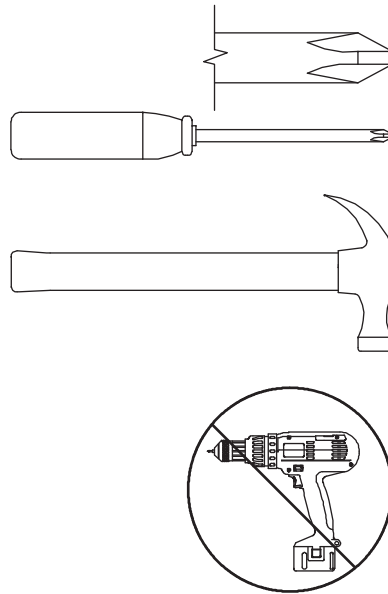
NOTE: THIS INSTRUCTION BOOKLET CONTAINS **IMPORTANT** SAFETY INFORMATION.

PLEASE READ AND KEEP FOR FUTURE REFERENCE.

Table of Contents

Assembly Tools Required

Part Identification	2-3
Hardware Identification	3-4
Assembly Steps	5-38
Français	39-43
Español	44-48
Safety	49-50
Warranty	51



No. 2 Phillips Screwdriver
Tip Shown Actual Size

Hammer
Not actual size 😊

Skip the power trip.
This time.

Part Identification

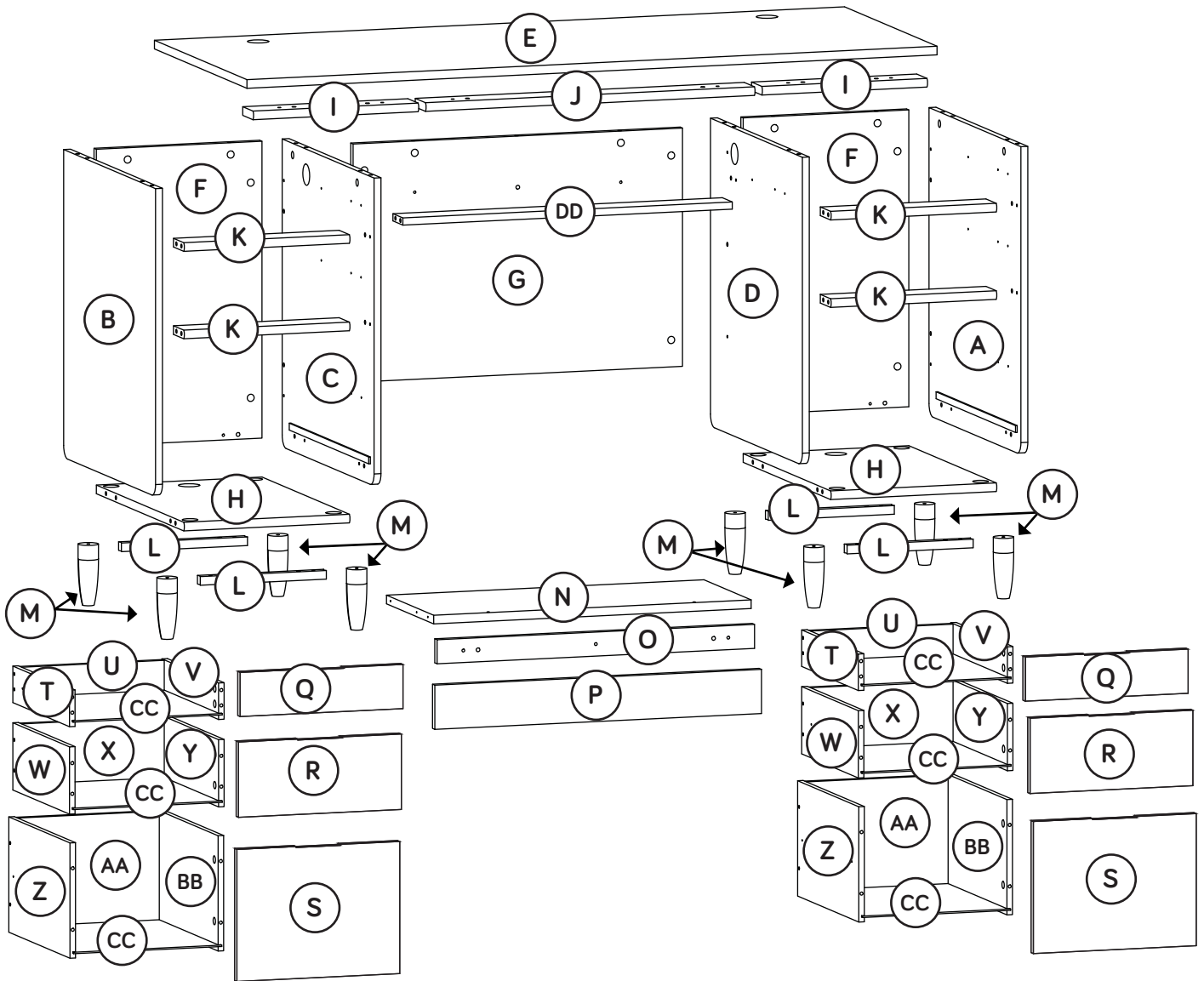
A	RIGHT END (1)	L	BOTTOM MOLDING (4)	V	SMALL RIGHT DRAWER SIDE (2)
B	LEFT END (1)	M	FOOT (8)	W	LEFT DRAWER SIDE (2)
C	LEFT UPRIGHT (1)	N	KEYBOARD SHELF (1)	X	DRAWER BACK (2)
D	RIGHT UPRIGHT (1)	O	KEYBOARD HINGE FRONT (1)	Y	RIGHT DRAWER SIDE (2)
E	TOP (1)	P	KEYBOARD FRONT (1)	Z	LARGE LEFT DRAWER SIDE (2)
F	BACK (2)	Q	SMALL DRAWER FRONT (2)	AA	LARGE DRAWER BACK (2)
G	MODESTY PANEL (1)	R	DRAWER FRONT (2)	BB	LARGE RIGHT DRAWER SIDE (2)
H	BOTTOM (2)	S	LARGE DRAWER FRONT (2)	CC	DRAWER BOTTOM (6)
I	SHORT TOP MOLDING (2)	T	SMALL LEFT DRAWER SIDE (2)	DD	MODESTY PANEL SHELF (1)
J	LONG TOP MOLDING (1)	U	SMALL DRAWER BACK (2)		
K	BRACE (4)				

Part Identification

Now you know
our ABCs.



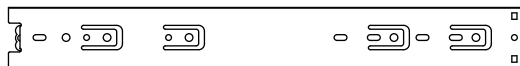
↑ While not all parts are labeled, some of the parts will have a label or an inked letter on the edge to help distinguish similar parts from each other. Use this part identification to help identify similar parts.



Hardware Identification

EE LONG EXTENSION
RAIL - 4

(EXTENSION SET SHOWN SEPARATED)



FF LONG EXTENSION
SLIDE - 4

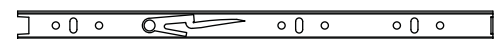


GG SHORT EXTENSION
RAIL - 2

(EXTENSION SET SHOWN SEPARATED)



HH SHORT EXTENSION
SLIDE - 2



Hardware Identification

† Screws are shown actual size. You may receive extra hardware with your unit.

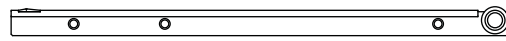
II RIGHT CABINET RAIL - 4



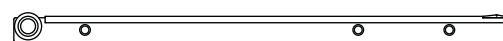
JJ LEFT CABINET RAIL - 4



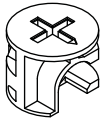
KK RIGHT DRAWER SLIDE - 4



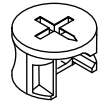
LL LEFT DRAWER SLIDE - 4



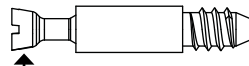
1 LARGE HIDDEN CAM - 50



2 SMALL HIDDEN CAM - 24

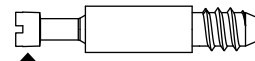


3 ANGLED HEAD CAM SCREW - 50



Angled head

4 STRAIGHT HEAD CAM SCREW - 24

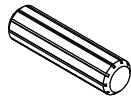


Straight head

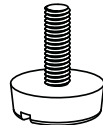
5 SHORT WOOD DOWEL - 16



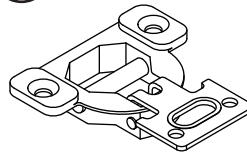
6 LONG WOOD DOWEL - 42



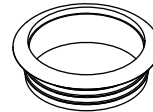
7 LEVELER - 8



8 HINGE - 2



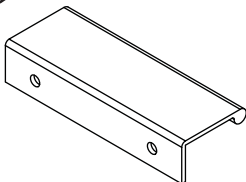
9 GROMMET - 4



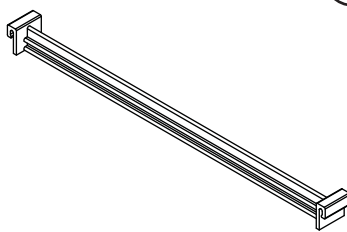
10 GROMMET and CAP - 2



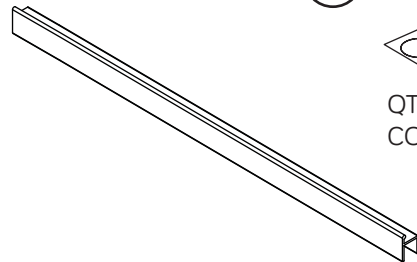
11 PULL - 6



12 FILE HANGER - 4



13 FILE GLIDE - 4

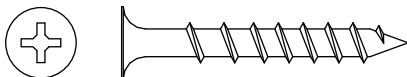


14 CAM COVER CARD - 1

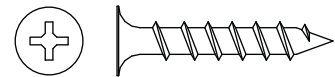


QTY-26
COVERS

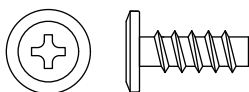
15 1-1/2" FLAT HEAD SCREW - 24



16 1-1/8" FLAT HEAD SCREW - 18



17 9/16" WAFER HEAD SCREW - 2



18 BLACK 1/2" FLAT HEAD SCREW - 48



19 SILVER 1/2" FLAT HEAD SCREW - 16

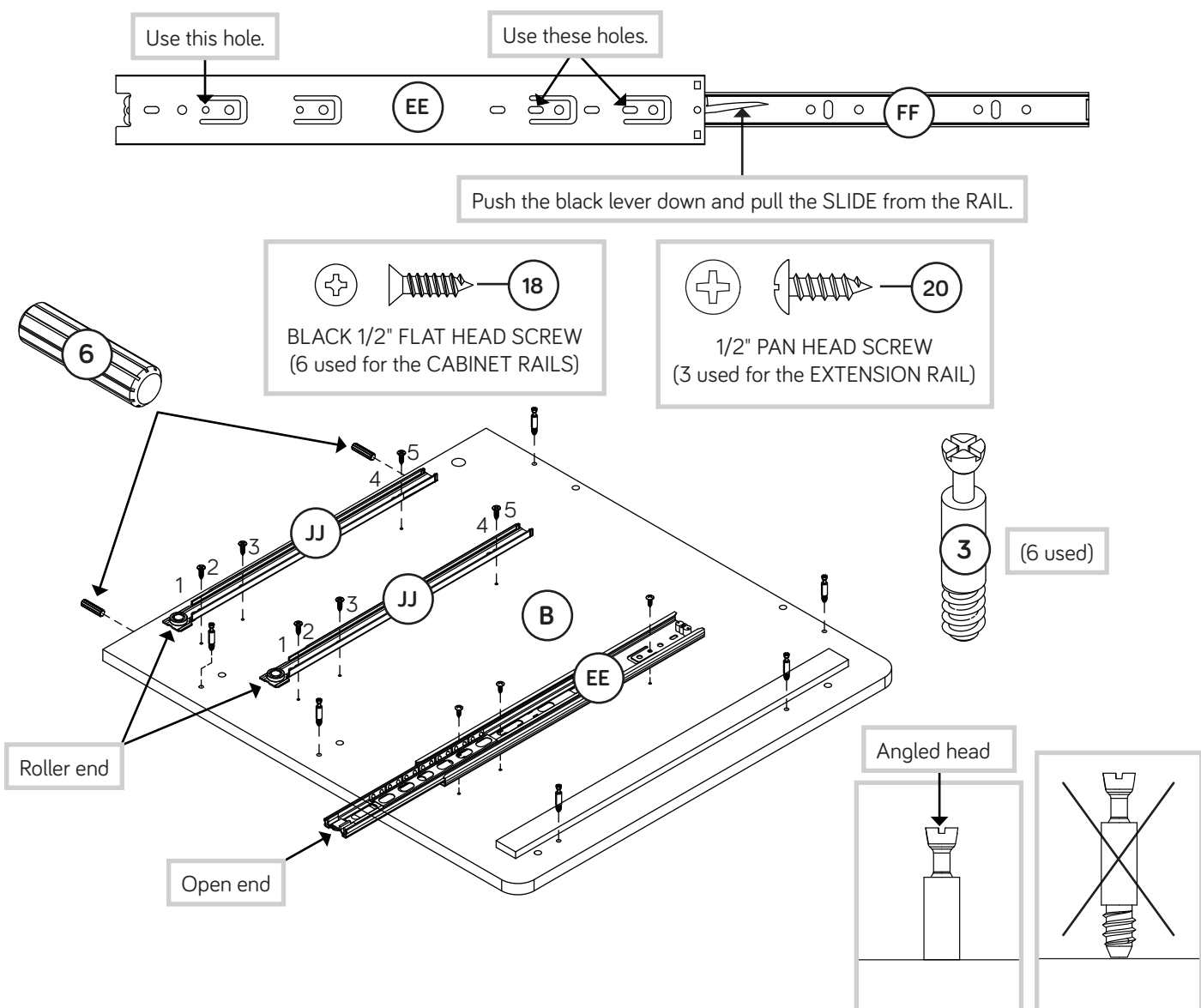


20 1/2" PAN HEAD SCREW - 36



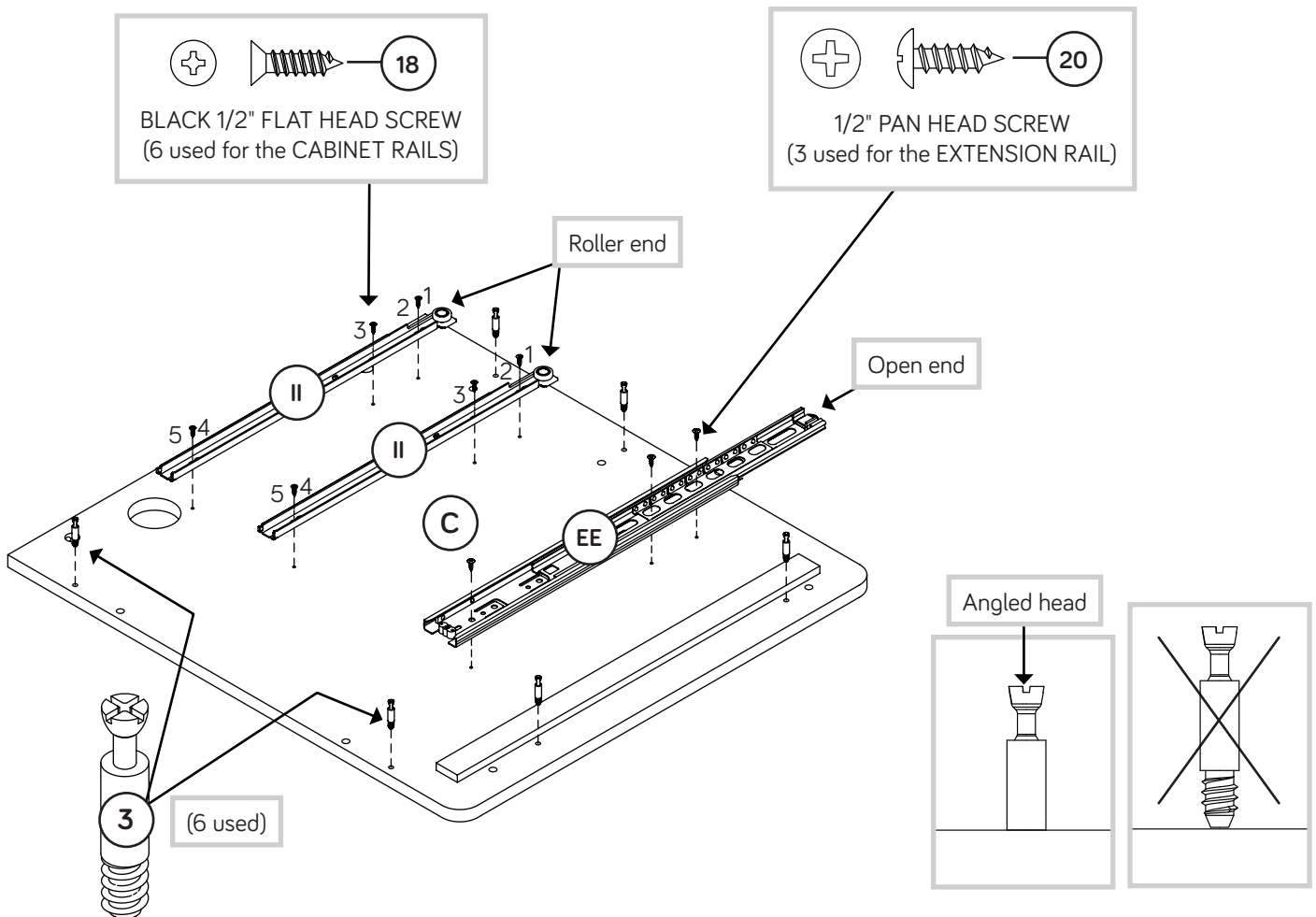
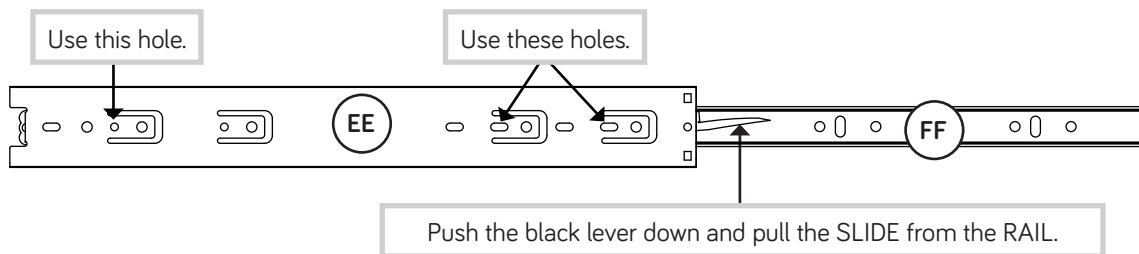
Step 1

- ✚ Assemble your unit on a carpeted floor or on the empty carton to avoid scratching your unit or the floor.
- ✚ Turn six ANGLED HEAD CAM SCREWS (3) into the LEFT END (B).
- ✚ Push two LONG WOOD DOWELS (6) into the short edge of the LEFT END (B).
- ✚ Fasten two LEFT CABINET RAILS (JJ) to the LEFT END (B). Use six BLACK 1/2" FLAT HEAD SCREWS (18) through the 2nd, 3rd, and 5th holes as shown.
- ✚ Separate a LONG EXTENSION SLIDE (FF) from a LONG EXTENSION RAIL (EE) as shown in the upper diagram. Be prepared, the parts are greasy.
- ✚ Fasten the LONG EXTENSION RAIL (EE) to the LEFT END (B). Use three 1/2" PAN HEAD SCREWS (20).
- ✚ **NOTE:** For each EXTENSION RAIL, turn a SCREW into the holes shown in the upper diagram. Then, slide the inner cartridge of the EXTENSION RAIL in to find the other two holes that line up with the holes in the LEFT END. Turn the SCREWS into those holes.
- ✚ **NOTE:** The LONG EXTENSION SLIDE will be used later for the LARGE DRAWERS.



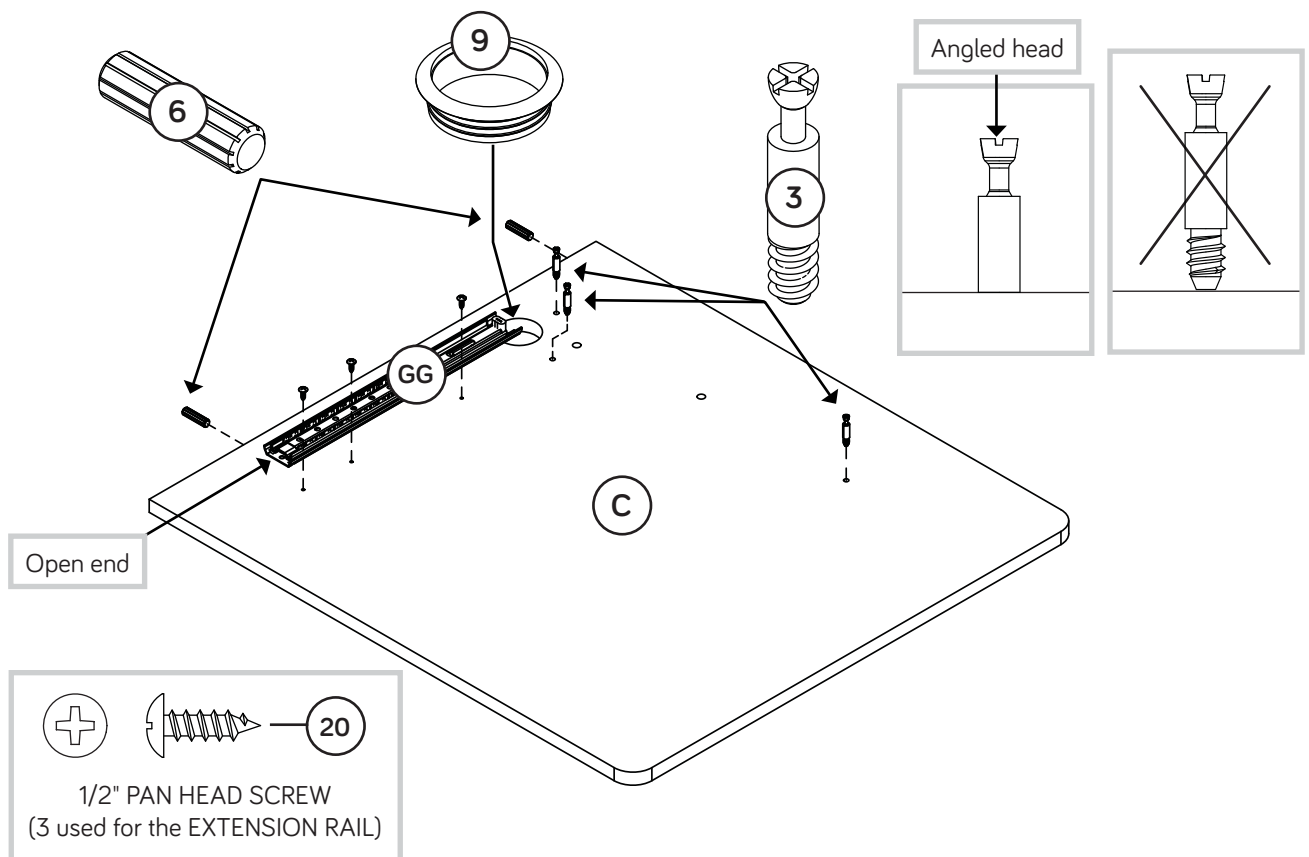
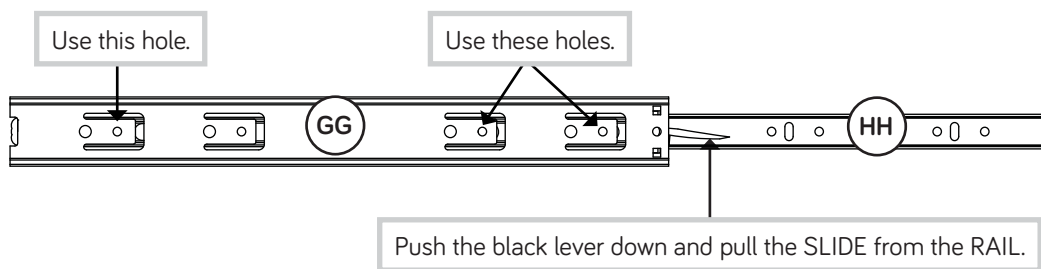
Step 2

- ✚ Turn six ANGLED HEAD CAM SCREWS (3) into the LEFT UPRIGHT (C).
- ✚ Fasten two RIGHT CABINET RAILS (II) to the LEFT UPRIGHT (C). Use six BLACK 1/2" FLAT HEAD SCREWS (18) through the 2nd, 3rd, and 5th holes as shown.
- ✚ Separate a LONG EXTENSION SLIDE (FF) from a LONG EXTENSION RAIL (EE) as shown in the upper diagram. Be prepared, the parts are greasy.
- ✚ Fasten the LONG EXTENSION RAIL (EE) to the LEFT UPRIGHT (C). Use three 1/2" PAN HEAD SCREWS (20).
- ✚ **NOTE:** For each EXTENSION RAIL, turn a SCREW into the hole shown in the upper diagram. Then, slide the inner cartridge of the EXTENSION RAIL in to find the other two holes that line up with the holes in the LEFT UPRIGHT. Turn the SCREWS into those holes.
- ✚ **NOTE:** The LONG EXTENSION SLIDE will be used later for the LARGE DRAWERS.



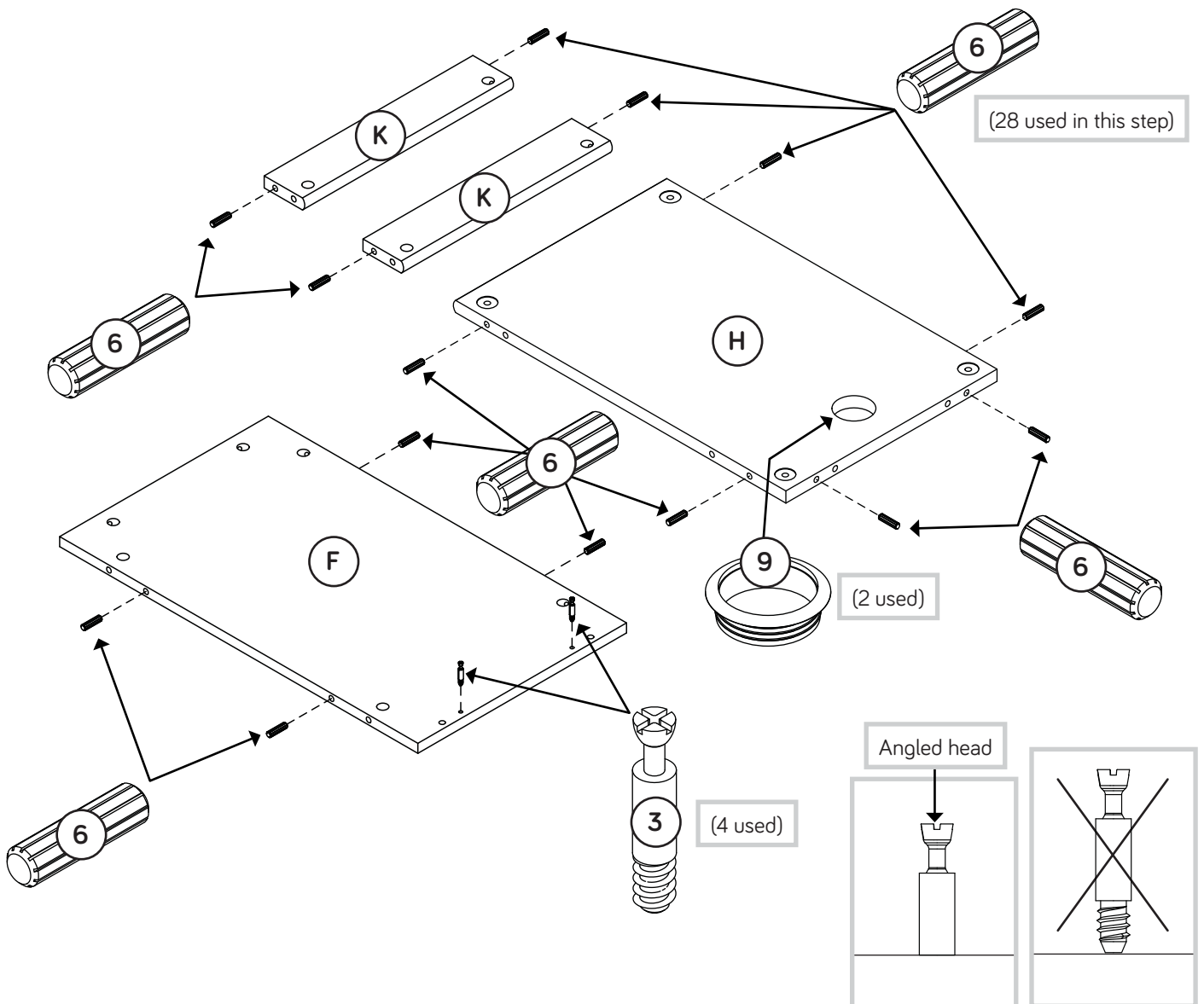
Step 3

- ✚ Flip the LEFT UPRIGHT (C) over.
- ✚ Turn three ANGLED HEAD CAM SCREWS (3) into the LEFT UPRIGHT (C).
- ✚ Push two LONG WOOD DOWELS (6) into the short edge of the LEFT UPRIGHT (C).
- ✚ Separate a SHORT EXTENSION SLIDE (HH) from a SHORT EXTENSION RAIL (GG) as shown in the upper diagram. Be prepared, the parts are greasy.
- ✚ Fasten the SHORT EXTENSION RAIL (GG) to the LEFT UPRIGHT (C). Use three 1/2" PAN HEAD SCREWS (20).
- ✚ NOTE: For each EXTENSION RAIL, turn a SCREW into the hole shown in the upper diagram. Then, slide the inner cartridge of the EXTENSION RAIL in to find the other two holes that line up with the holes in the LEFT UPRIGHT. Turn the SCREWS into those holes.
- ✚ NOTE: The SHORT EXTENSION SLIDE will be used later for the KEYBOARD SHELF.
- ✚ Insert a GROMMET (9) into the large hole in the LEFT UPRIGHT (C).



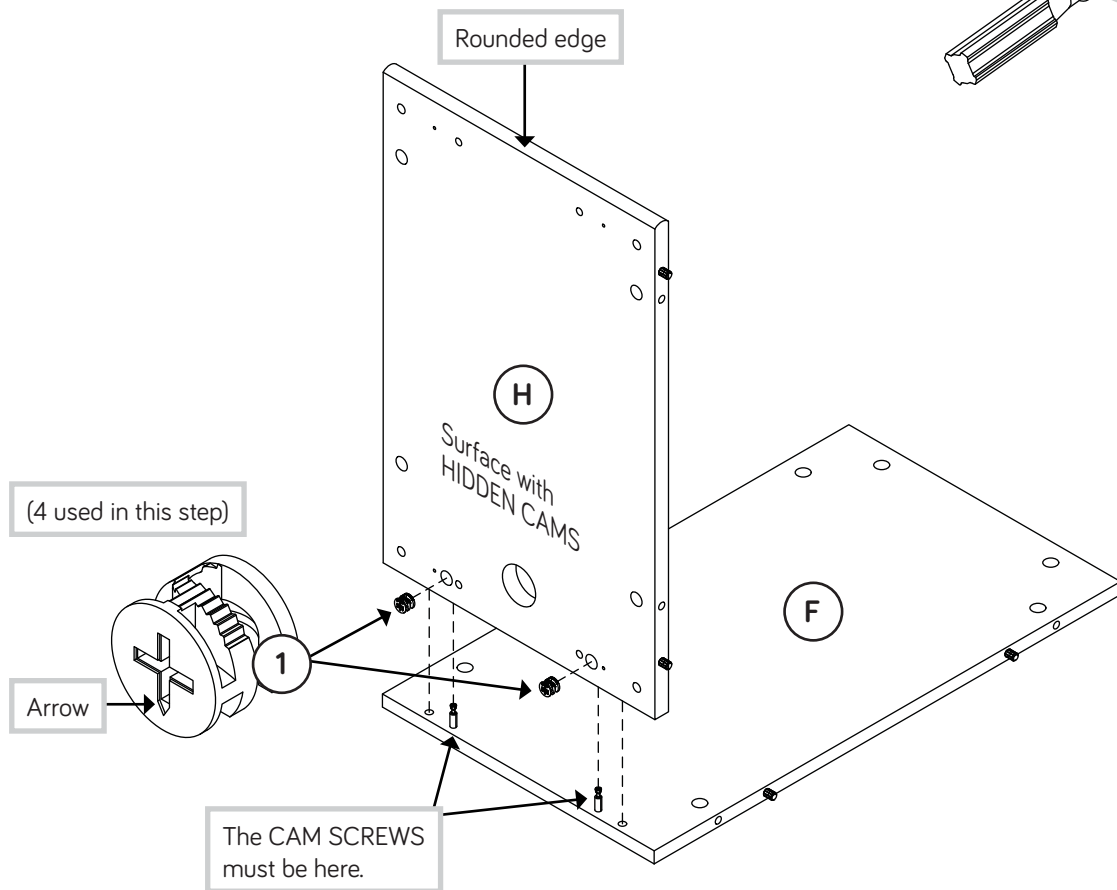
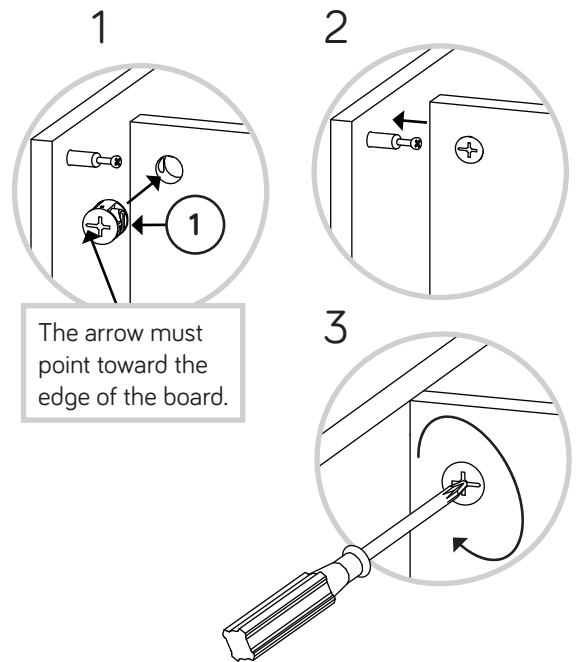
Step 4

- ✚ Push fourteen LONG WOOD DOWELS (6) into a BACK (F), BOTTOM (H), and two BRACES (K).
- ✚ Turn two ANGLED HEAD CAM SCREWS (3) into the BACK (F).
- ✚ Insert a GROMMET (9) into the large hole in the BOTTOM (H).
- ✚ Repeat this step for the other BACK (F), BOTTOM (H), and BRACES (K).



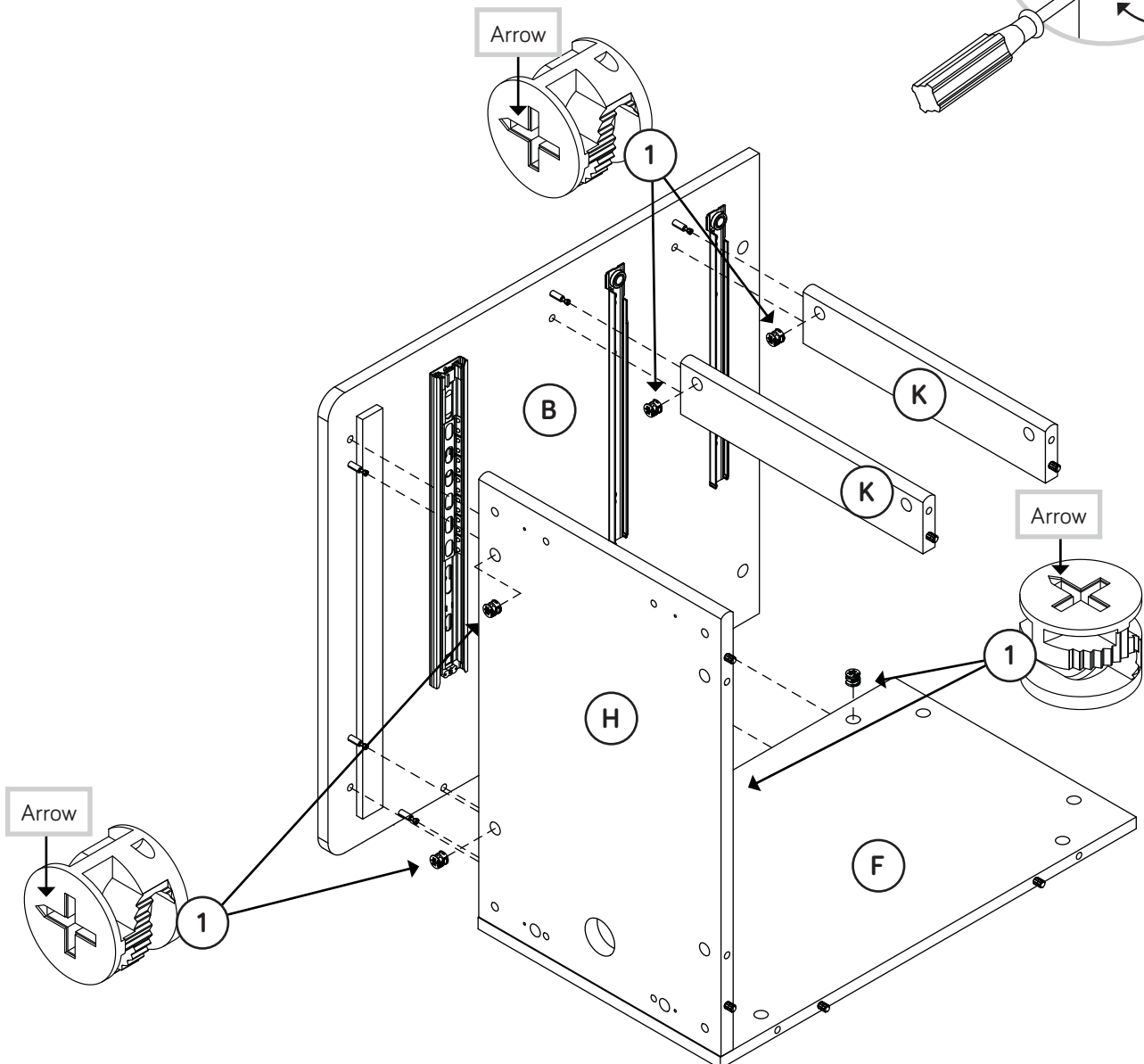
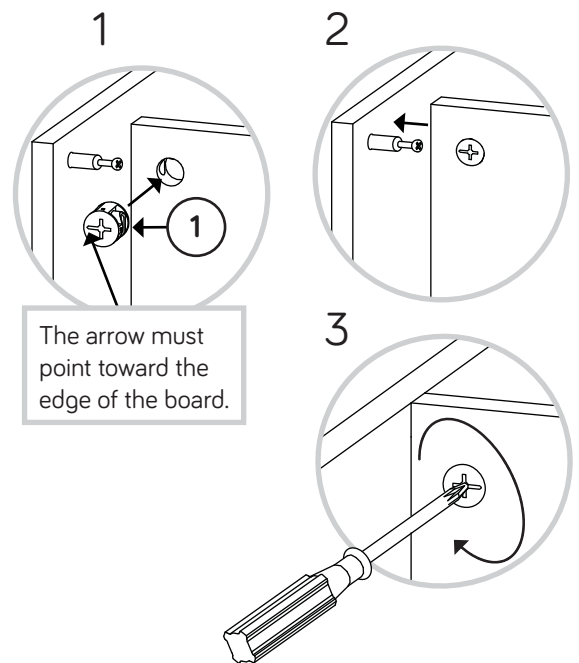
Step 5

- ✚ Push two LARGE HIDDEN CAMS (1) into a BOTTOM (H).
- ✚ Fasten the BOTTOM (H) to a BACK (F). Tighten two LARGE HIDDEN CAMS.
- ✚ **NOTE:** Be sure the WOOD DOWELS in the BOTTOM (H) insert into the BACK.
- ✚ Repeat this step for the other BACK (F), and BOTTOM (H).



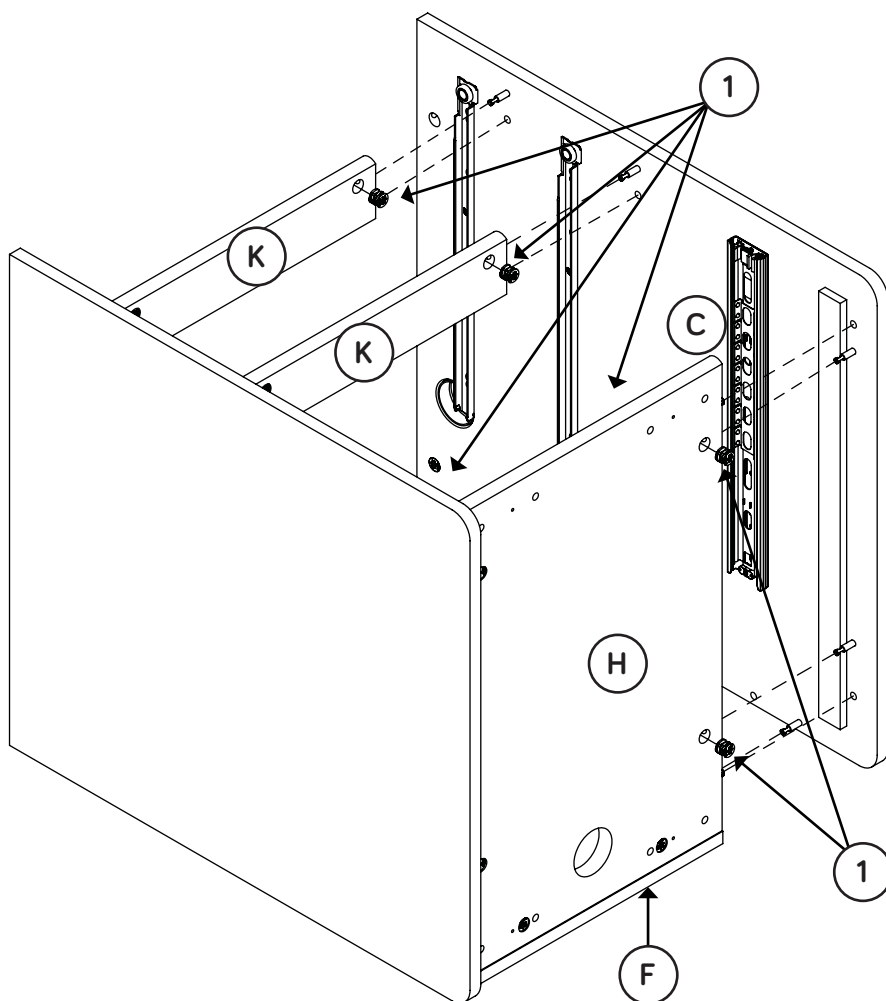
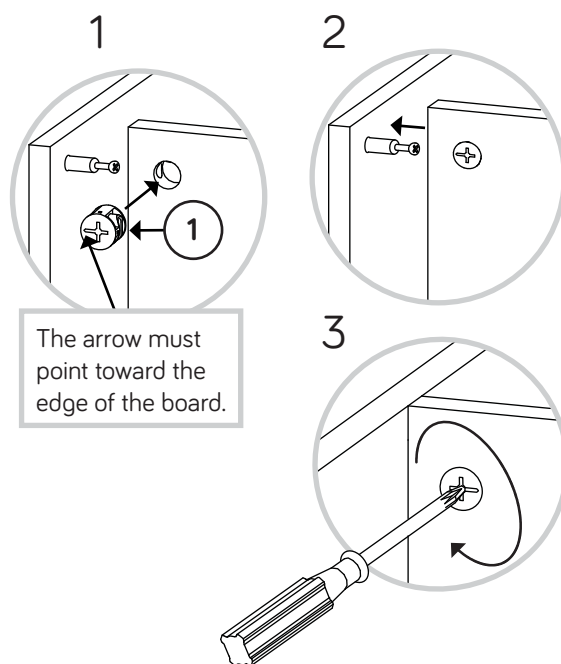
Step 6

- ✚ Push six LARGE HIDDEN CAMS (1) into a BACK (F), BOTTOM (H), and two BRACES (K).
- ✚ Fasten the LEFT END (B) to the BACK (F) and BOTTOM (H). Tighten four LARGE HIDDEN CAMS.
- ✚ **NOTE:** Be sure the WOOD DOWELS in the BACK and BOTTOM insert into the LEFT END.
- ✚ Fasten two BRACES (K) to the LEFT END (B). Tighten two HIDDEN CAMS.
- ✚ **NOTE:** Be sure the WOOD DOWELS in the BRACES insert into the LEFT END.



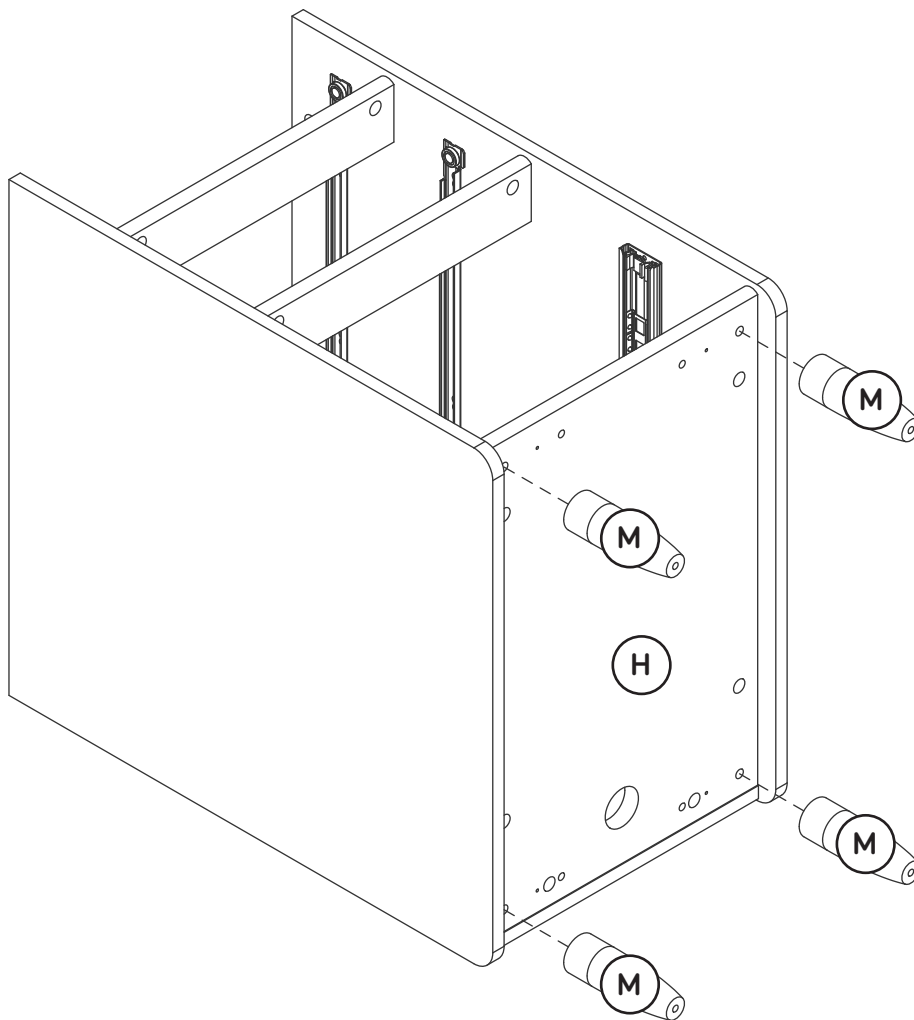
Step 7

- ✚ Push six LARGE HIDDEN CAMS (1) into the BACK (F), BOTTOM (H), and BRACES (K).
- ✚ Fasten the LEFT UPRIGHT (C) to the BACK (F), BOTTOM (H), and BRACES (K). Tighten six LARGE HIDDEN CAMS.
- ✚ **NOTE:** Be sure the WOOD DOWELS in the BACK, BOTTOM, and BRACES insert into the LEFT UPRIGHT.



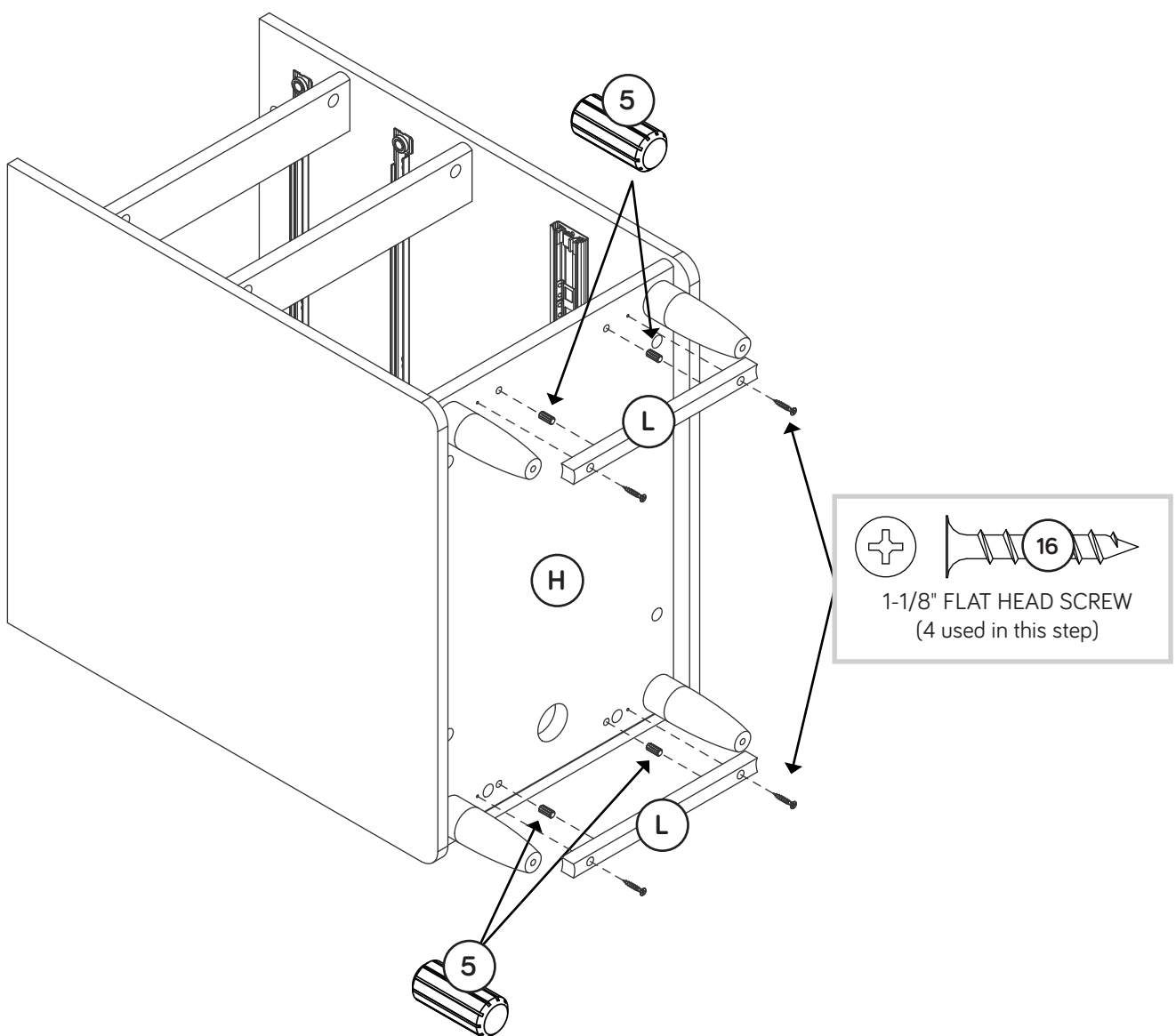
Step 8

Turn and tighten four FEET (M) into the BOTTOM (H).



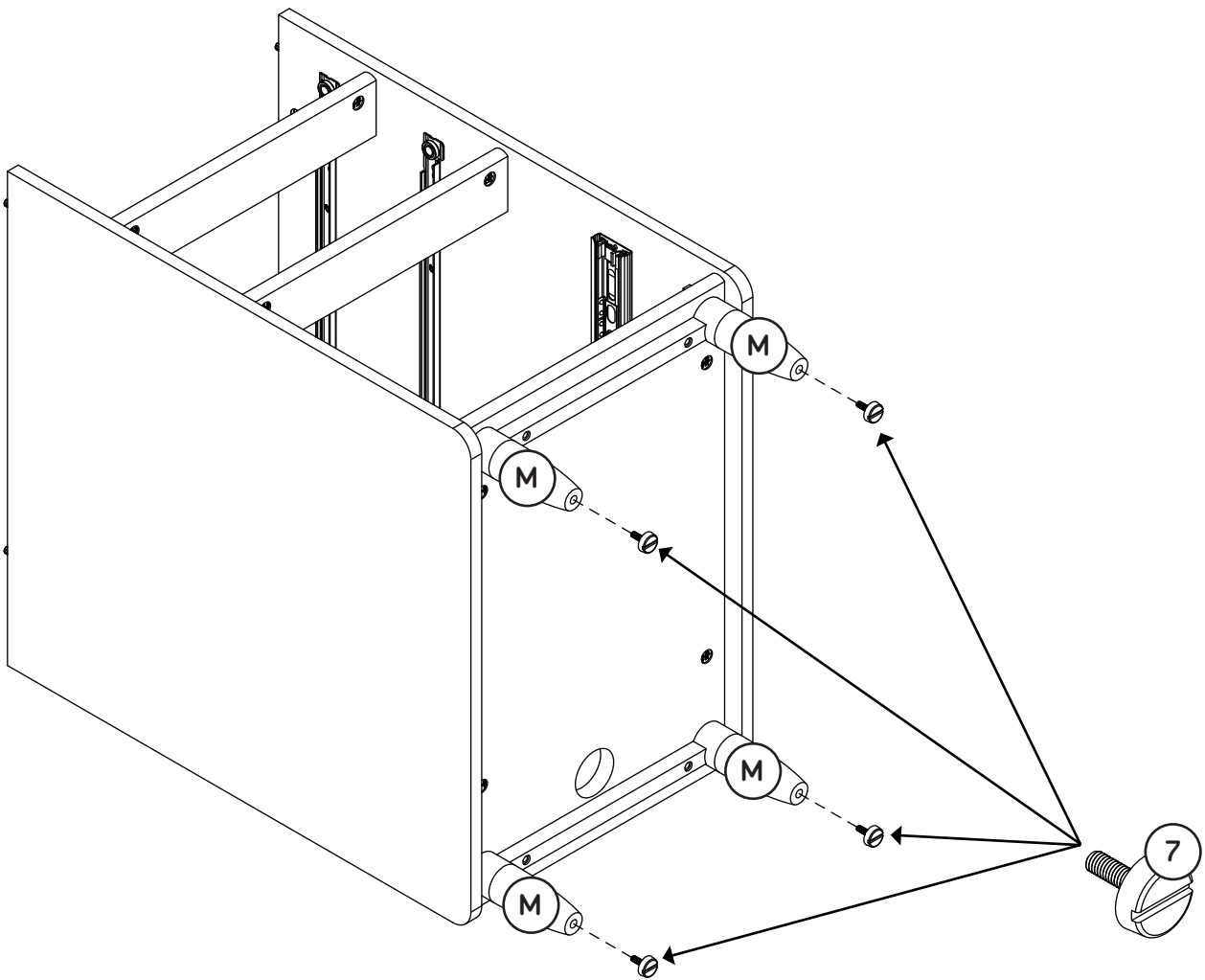
Step 9

- ✚ Push four SHORT WOOD DOWELS (5) into the BOTTOM (H).
- ✚ Fasten two BOTTOM MOLDINGS (L) to the BOTTOM (H). Use four 1-1/8" FLAT HEAD SCREWS (16).



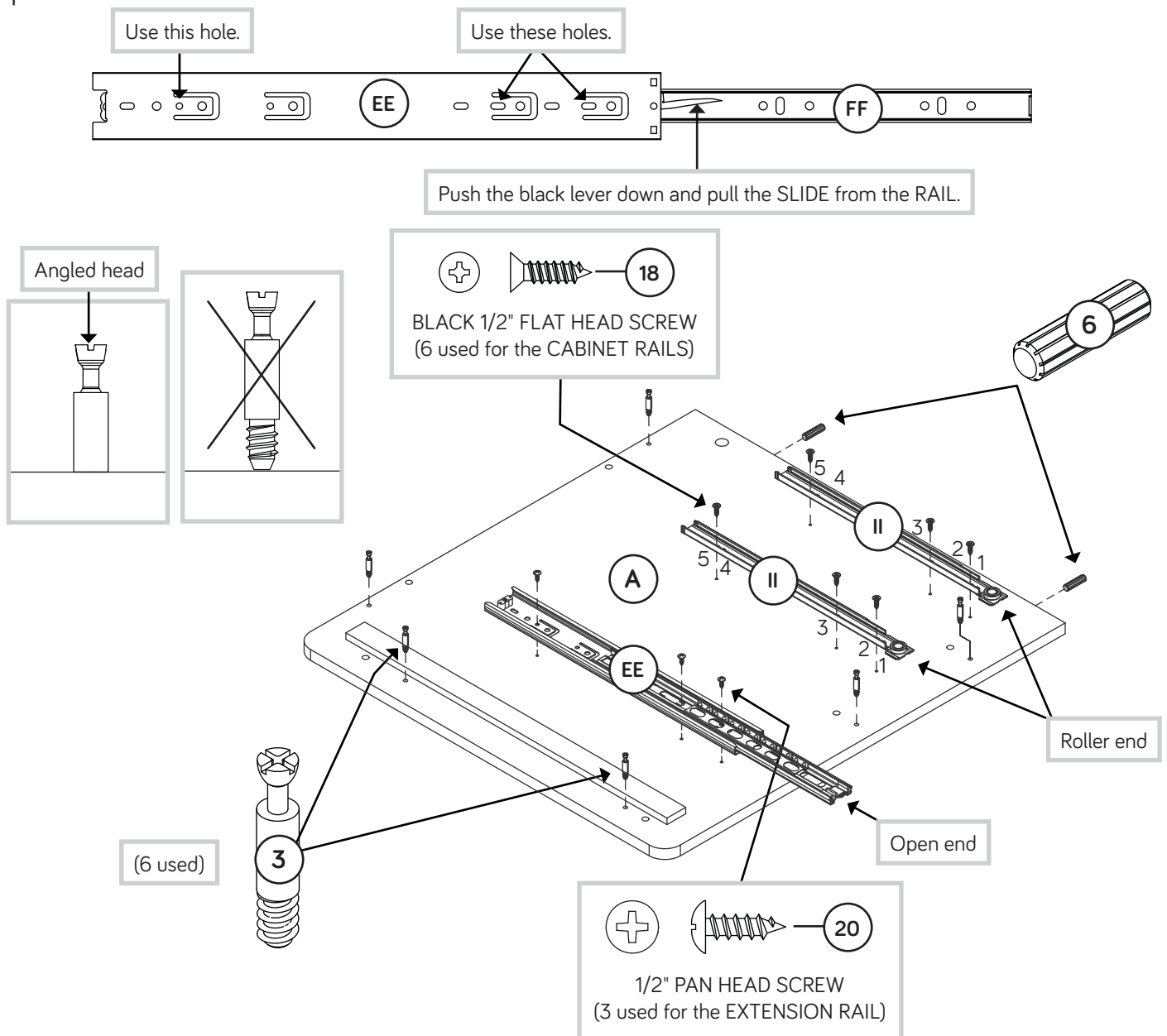
Step 10

- ✚ Turn four LEVELERS (7) into the FEET (M).
- ✚ NOTE: The LEVELERS will be adjusted in the last step.



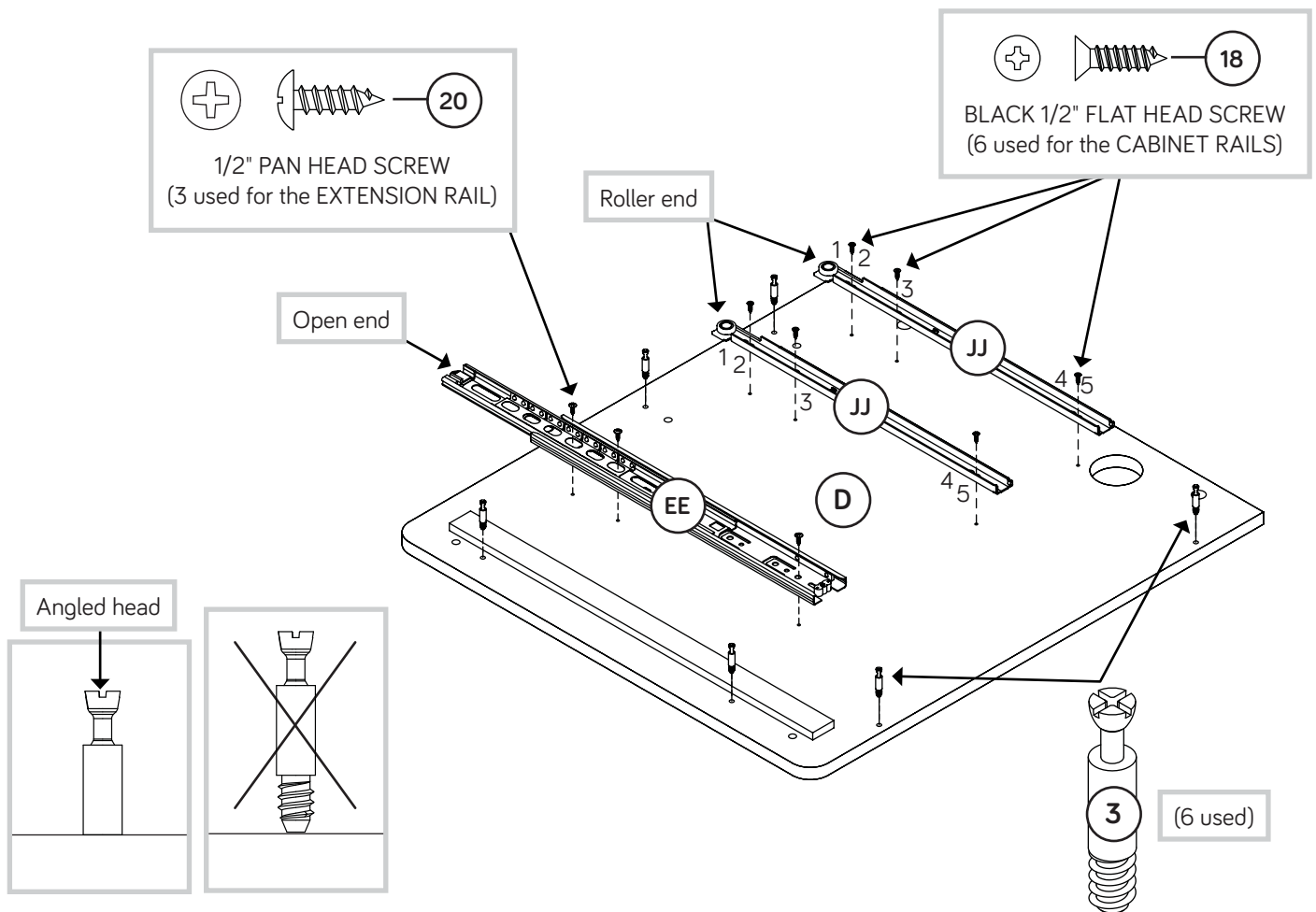
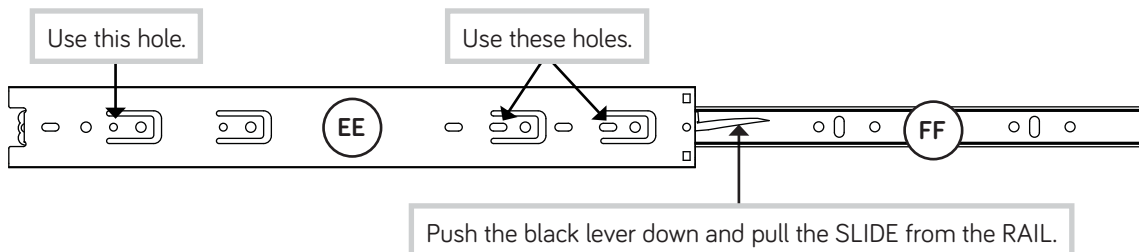
Step 11

- ✚ Turn six ANGLED HEAD CAM SCREWS (3) into the RIGHT END (A).
- ✚ Push two LONG WOOD DOWELS (6) into the short edge of the RIGHT END (A).
- ✚ Fasten two RIGHT CABINET RAILS (II) to the RIGHT END (A). Use six BLACK 1/2" FLAT HEAD SCREWS (18) through the 2nd, 3rd, and 5th holes as shown.
- ✚ Separate a LONG EXTENSION SLIDE (FF) from a LONG EXTENSION RAIL (EE) as shown in the upper diagram. Be prepared, the parts are greasy.
- ✚ Fasten the LONG EXTENSION RAIL (EE) to the RIGHT END (A). Use three 1/2" PAN HEAD SCREWS (20).
- ✚ **NOTE:** For each EXTENSION RAIL, turn a SCREW into the hole shown in the enlarged diagram. Then, slide the inner cartridge of the EXTENSION RAIL in to find the other two holes that line up with the holes in the RIGHT END. Turn the SCREWS into those holes.
- ✚ **NOTE:** The LONG EXTENSION SLIDE will be used later for the DRAWERS.



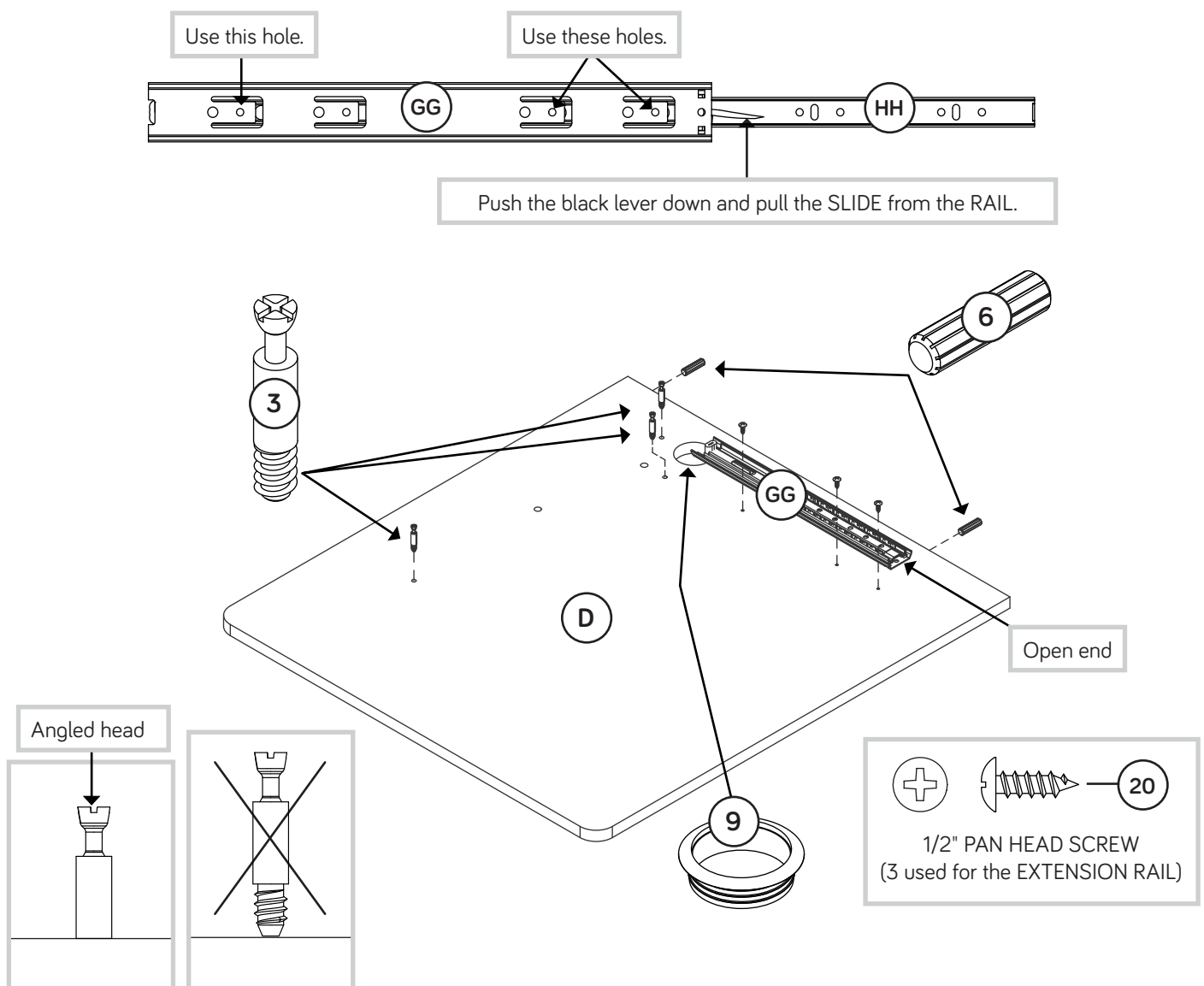
Step 12

- ✚ Turn six ANGLED HEAD CAM SCREWS (3) into the RIGHT UPRIGHT (D).
- ✚ Fasten two LEFT CABINET RAILS (JJ) to the RIGHT UPRIGHT (D). Use six BLACK 1/2" FLAT HEAD SCREWS (18) through the 2nd, 3rd, and 5th holes as shown.
- ✚ Separate a LONG EXTENSION SLIDE (FF) from a LONG EXTENSION RAIL (EE) as shown in the upper diagram. Be prepared, the parts are greasy.
- ✚ Fasten the LONG EXTENSION RAIL (EE) to the RIGHT UPRIGHT (D). Use three 1/2" PAN HEAD SCREWS (20).
- ✚ **NOTE:** For each EXTENSION RAIL, turn a SCREW into the hole shown in the upper diagram. Then, slide the inner cartridge of the EXTENSION RAIL in to find the other two holes that line up with the holes in the RIGHT UPRIGHT. Turn the SCREWS into those holes.
- ✚ **NOTE:** The LONG EXTENSION SLIDE will be used later for the DRAWERS.



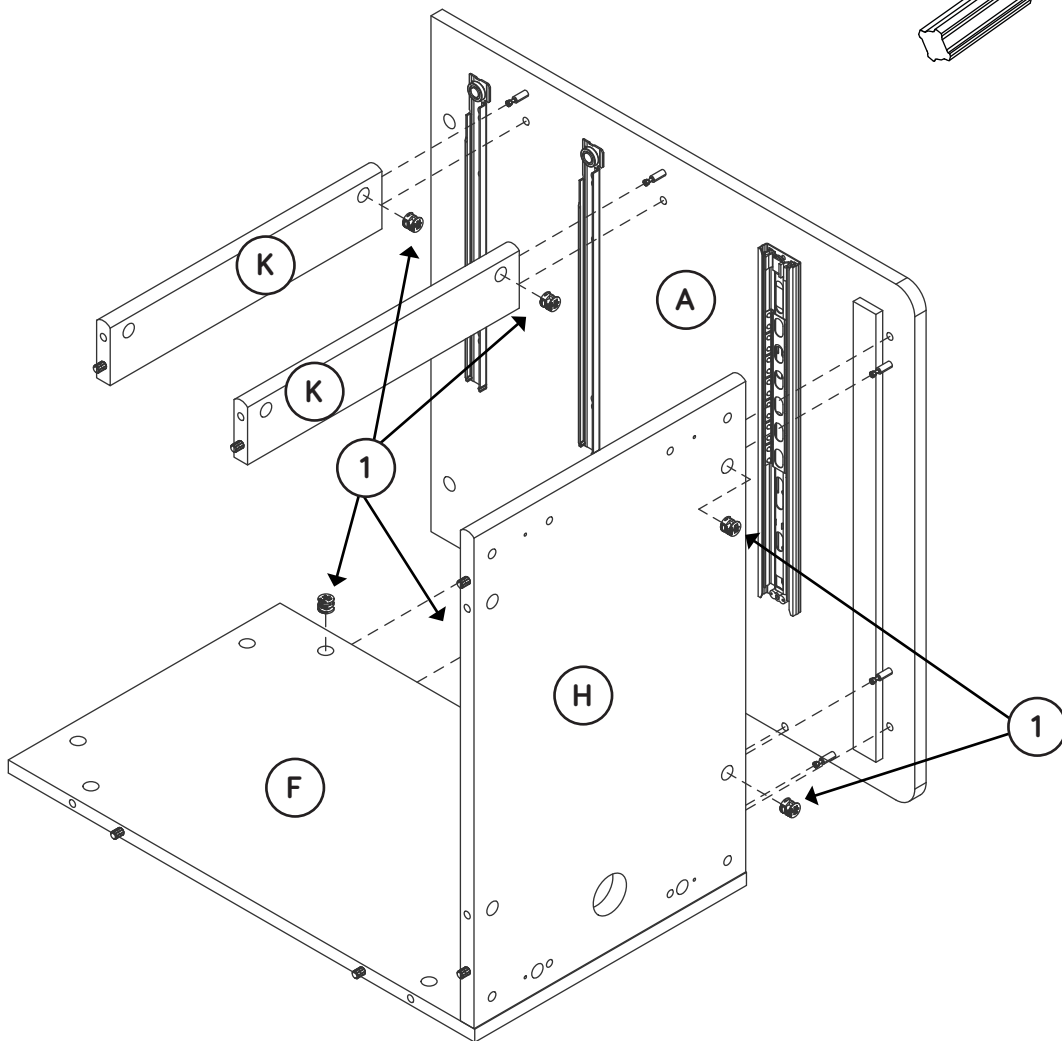
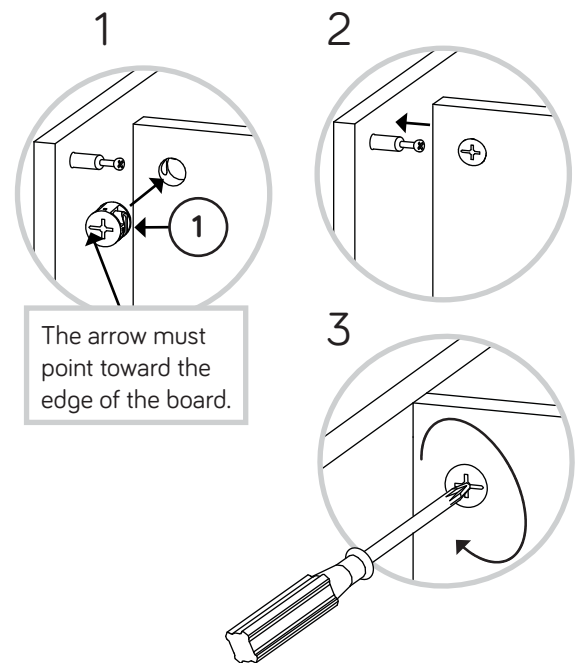
Step 13

- ✚ Flip the RIGHT UPRIGHT (D) over.
- ✚ Turn three ANGLED HEAD CAM SCREWS (3) into the RIGHT UPRIGHT (D).
- ✚ Push two LONG WOOD DOWELS (6) into the short edge of the RIGHT UPRIGHT (D).
- ✚ Separate a SHORT EXTENSION SLIDE (HH) from a SHORT EXTENSION RAIL (GG) as shown in the upper diagram. Be prepared, the parts are greasy.
- ✚ Fasten the SHORT EXTENSION RAIL (GG) to the RIGHT UPRIGHT (D). Use three 1/2" PAN HEAD SCREWS (20).
- ✚ NOTE: For each EXTENSION RAIL, turn a SCREW into the hole shown in the upper diagram. Then, slide the inner cartridge of the EXTENSION RAIL in to find the other two holes that line up with the holes in the RIGHT UPRIGHT. Turn the SCREWS into those holes.
- ✚ NOTE: The SHORT EXTENSION SLIDE will be used later for the KEYBOARD SHELF.
- ✚ Insert a GROMMET (9) into the large hole in the RIGHT UPRIGHT (D).



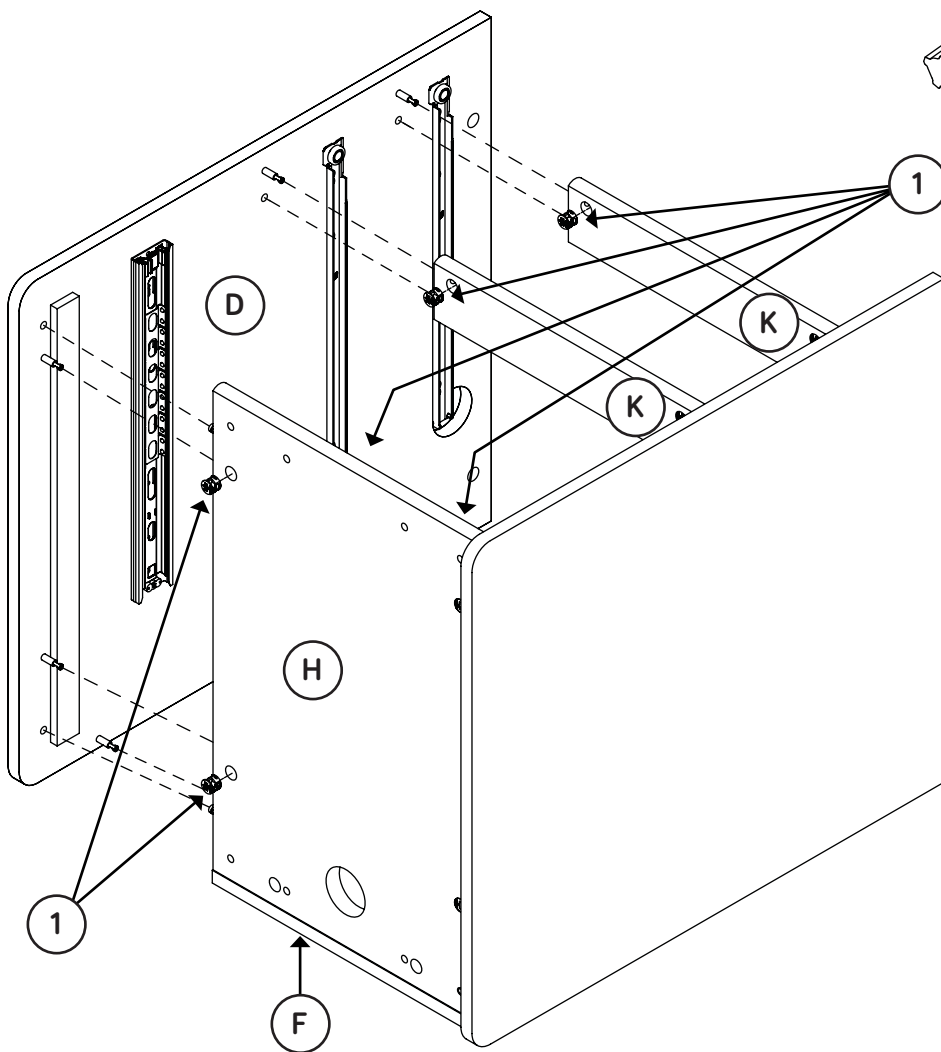
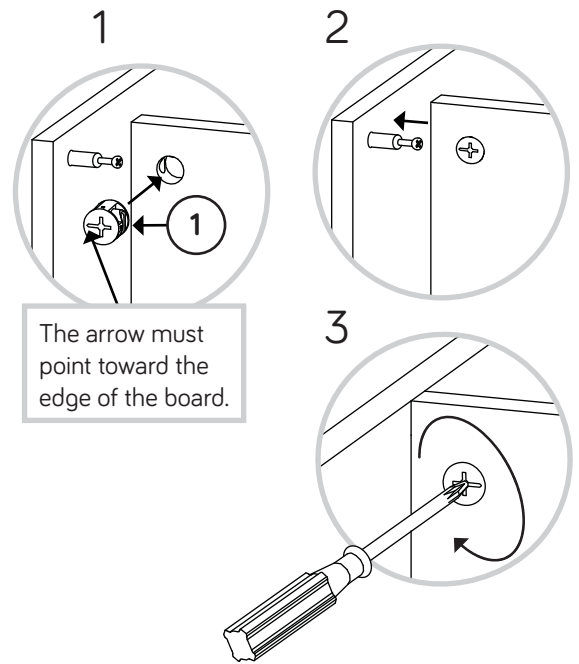
Step 14

- ✚ Push six LARGE HIDDEN CAMS (1) into a BACK (F), BOTTOM (H), and two BRACES (K).
- ✚ Fasten the RIGHT END (A) to the BACK (F) and BOTTOM (H). Tighten four LARGE HIDDEN CAMS.
- ✚ **NOTE:** Be sure the WOOD DOWELS in the BACK and BOTTOM insert into the RIGHT END.
- ✚ Fasten two BRACES (K) to the RIGHT END (A). Tighten two HIDDEN CAMS.
- ✚ **NOTE:** Be sure the WOOD DOWELS in the BRACES insert into the RIGHT END.



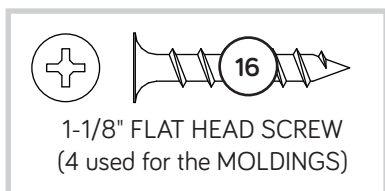
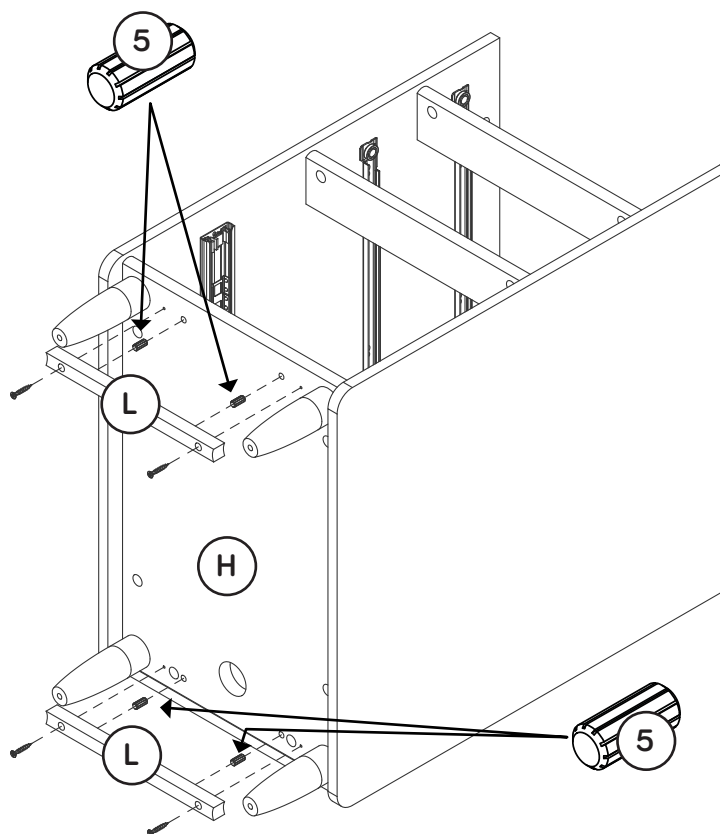
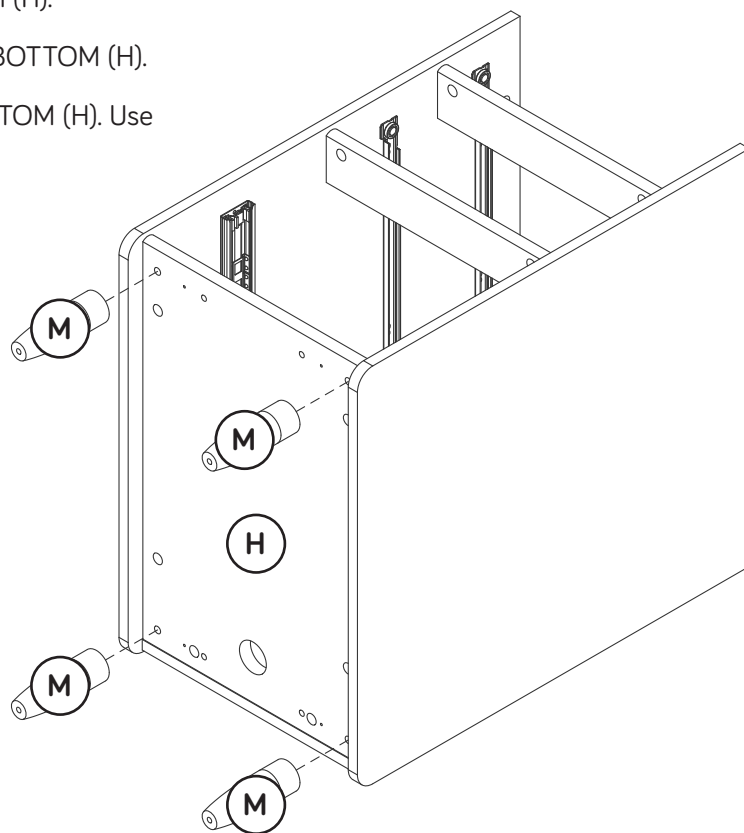
Step 15

- ✚ Push six LARGE HIDDEN CAMS (1) into the BACK (F), BOTTOM (H), and BRACES (K).
- ✚ Fasten the RIGHT UPRIGHT (D) to the BACK (F), BOTTOM (H), and BRACES (K). Tighten six LARGE HIDDEN CAMS.
- ✚ **NOTE:** Be sure the WOOD DOWELS in the BACK, BOTTOM, and BRACES insert into the RIGHT UPRIGHT.



Step 16

- ✚ Turn and tighten four FEET (M) into the BOTTOM (H).
- ✚ Push four SHORT WOOD DOWELS (5) into the BOTTOM (H).
- ✚ Fasten two BOTTOM MOLDINGS (L) to the BOTTOM (H). Use four 1-1/8" FLAT HEAD SCREWS (16).

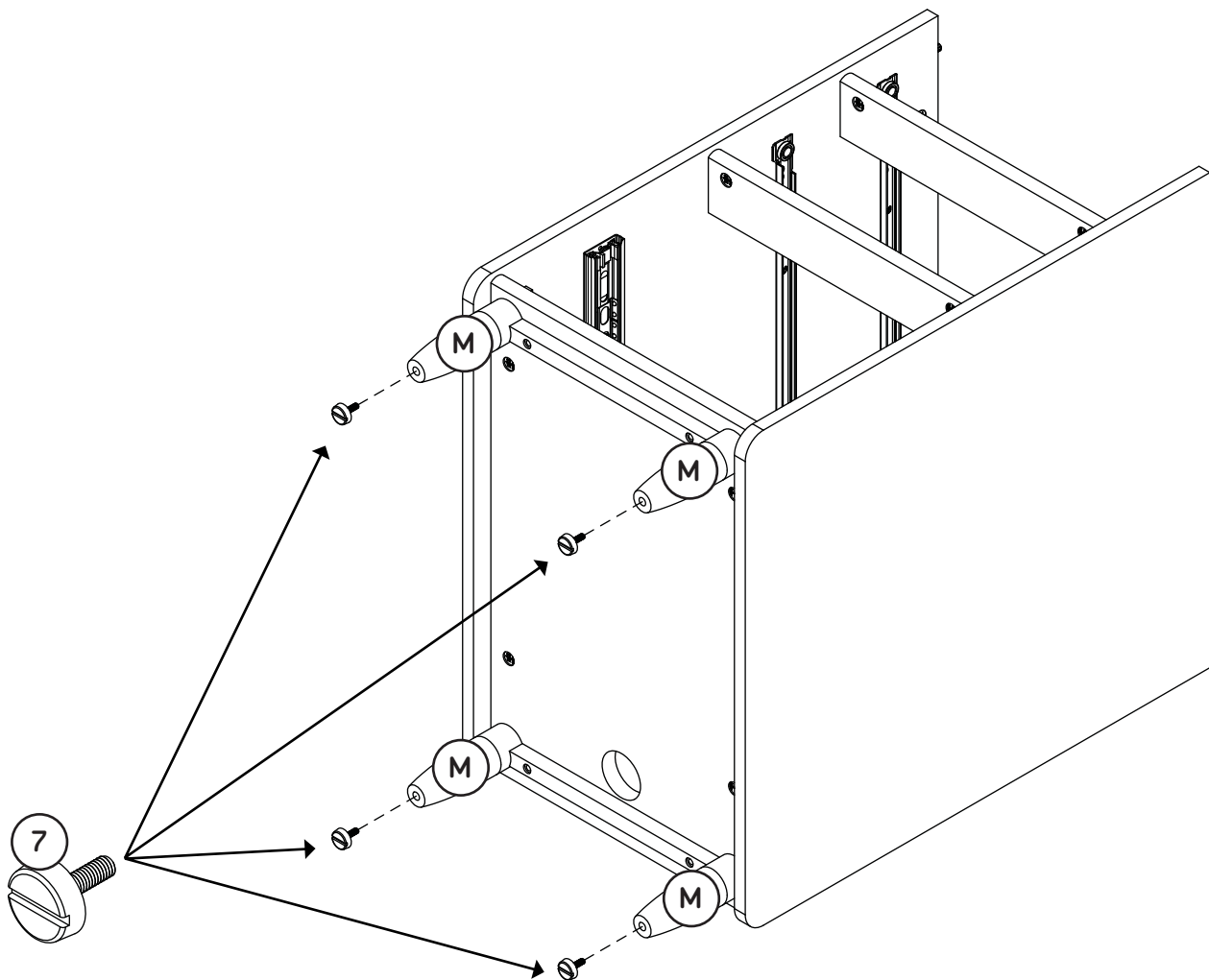


Step 17

- Turn four LEVELERS (7) into the FEET (M).
- NOTE:** The LEVELERS will be adjusted in the last step.

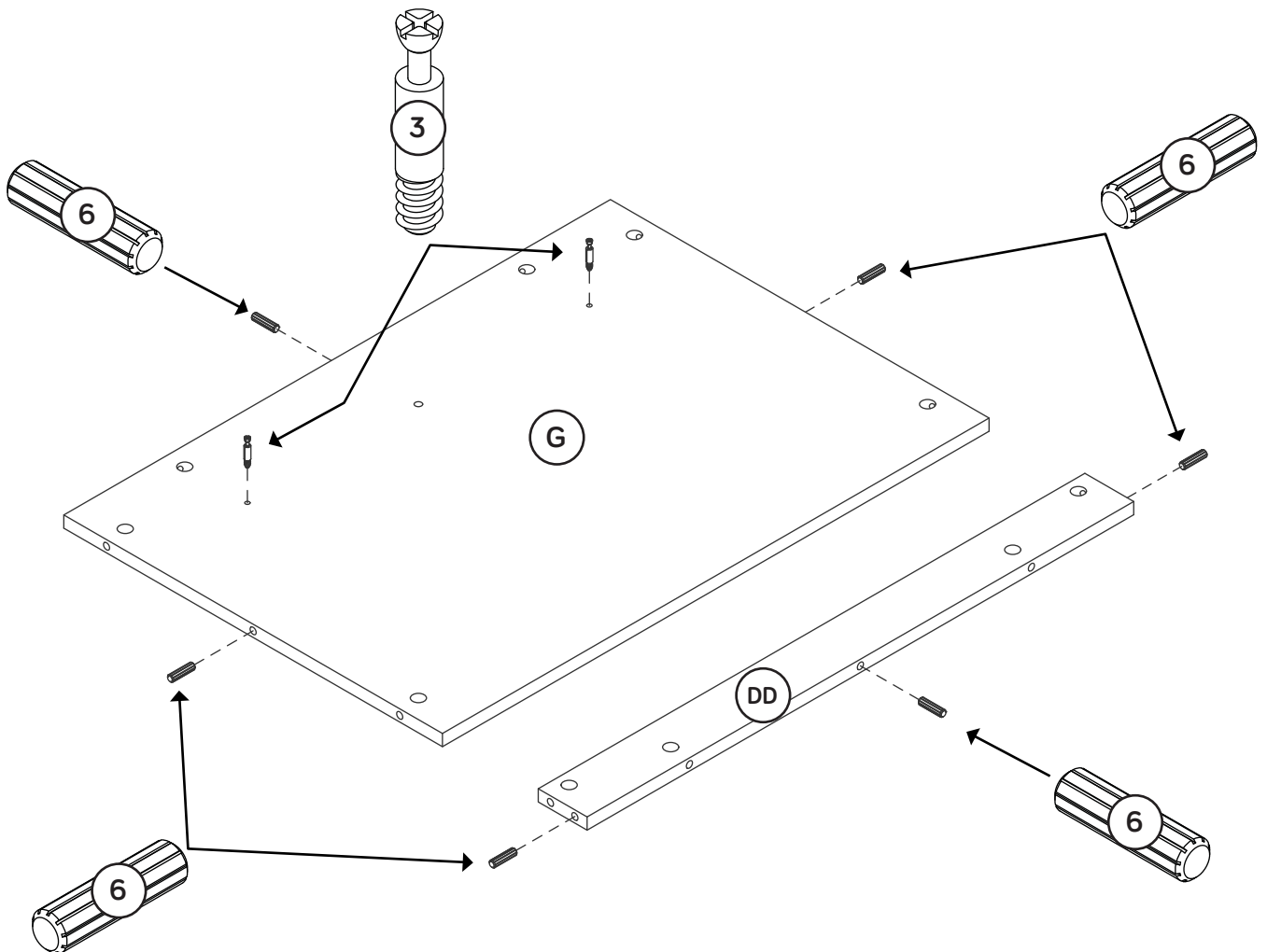
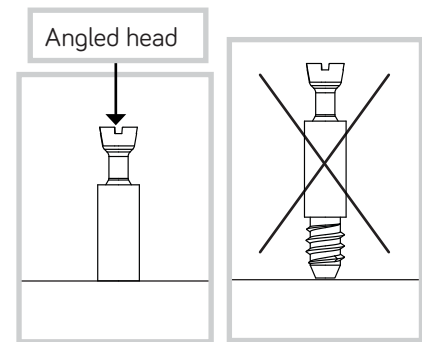


Now might be a good time to refresh your drink.



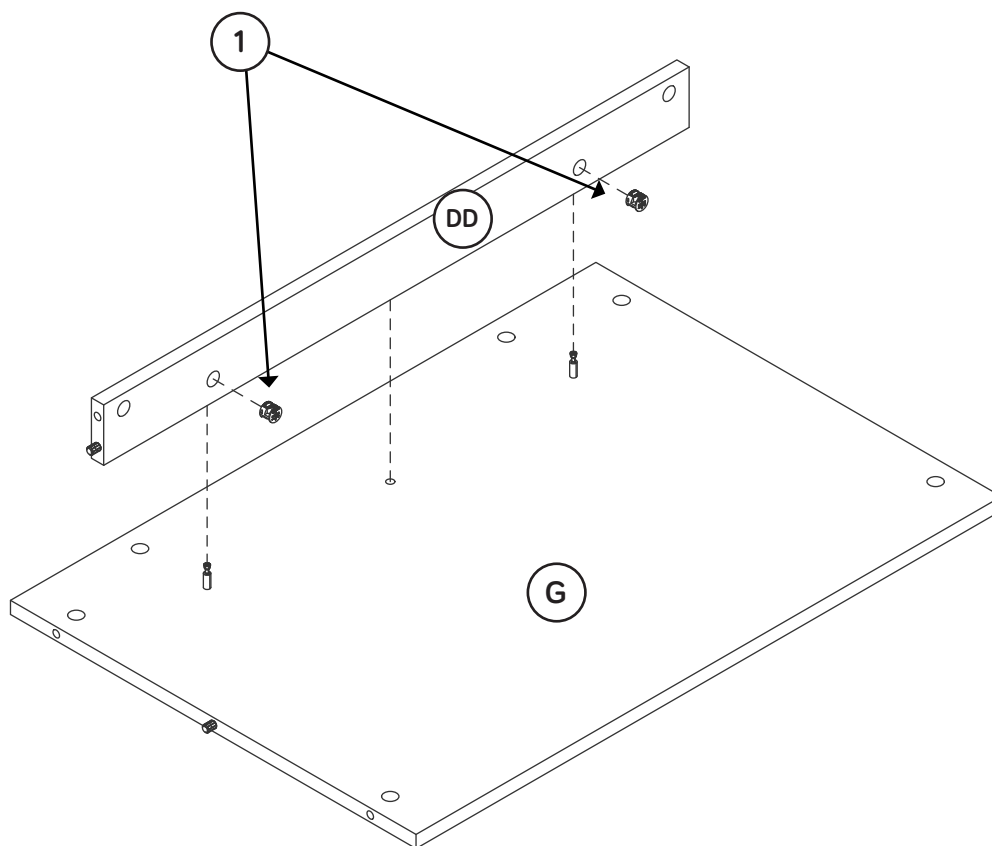
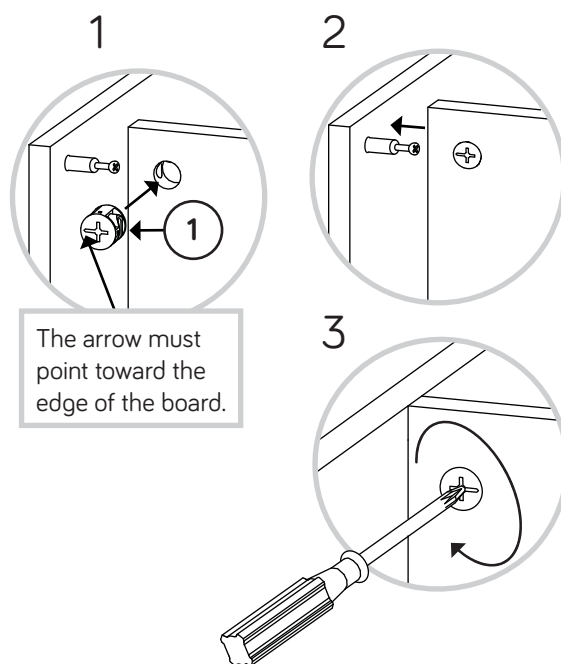
Step 18

- Turn two ANGLED HEAD CAM SCREWS (3) into the MODESTY PANEL (G).
- Push six LONG WOOD DOWELS (6) into the edges of the MODESTY PANEL (G) and MODESTY PANEL SHELF (DD).



Step 19

- ✚ Push two LARGE HIDDEN CAMS (1) into the MODESTY PANEL SHELF (DD).
- ✚ Fasten the MODESTY PANEL SHELF (DD) to the MODESTY PANEL (G). Tighten two LARGE HIDDEN CAMS.
- ✚ **NOTE:** Be sure the WOOD DOWEL in the MODESTY PANEL SHELF inserts into the hole in the MODESTY PANEL.



Step 20

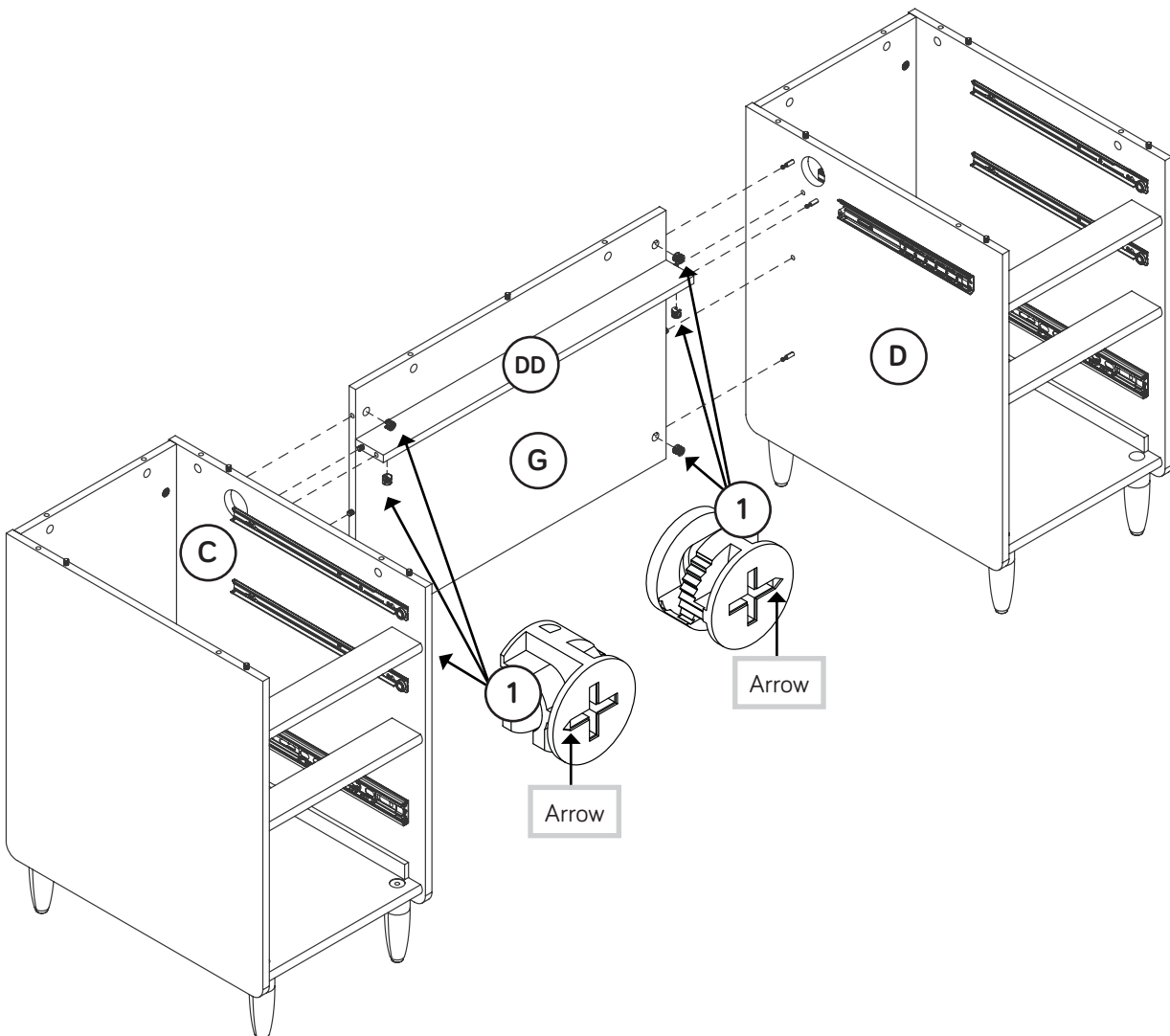
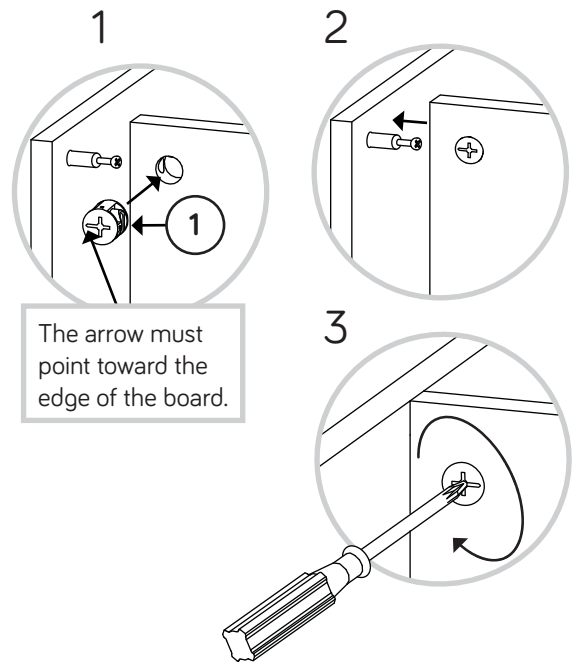
✚ This step will require 2 people to assemble.

✚ Push six LARGE HIDDEN CAMS (1) into the MODESTY PANEL (G) and MODESTY PANEL SHELF (DD).

✚ Stand the unit pedestals onto their FEET.

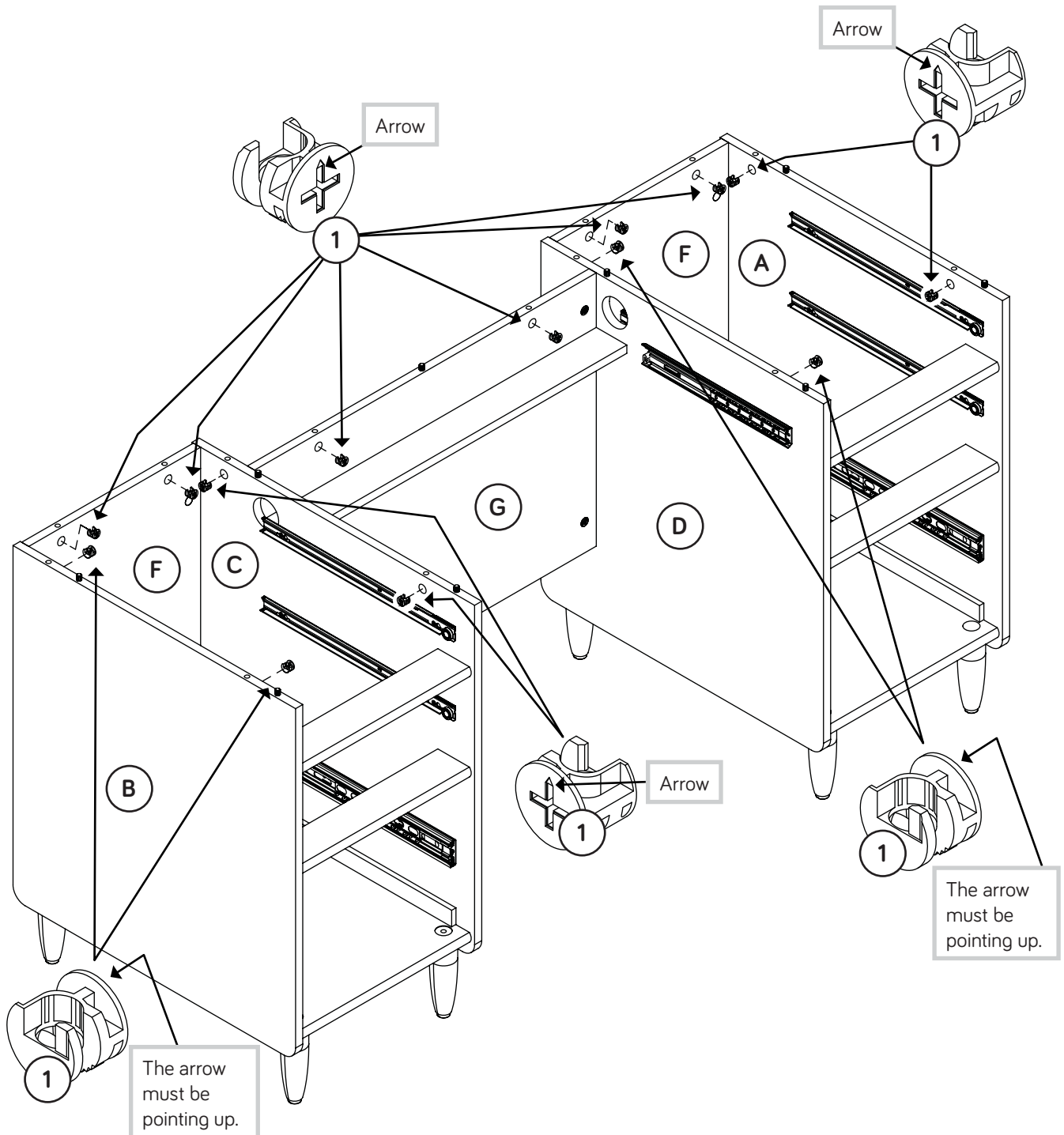
✚ Fasten the MODESTY PANEL (G) and MODESTY PANEL SHELF (DD) to the UPRIGHTS (C and D). Tighten six LARGE HIDDEN CAMS.

✚ **NOTE:** Be sure the WOOD DOWELS in the MODESTY PANEL and MODESTY PANEL SHELF insert into the holes in the UPRIGHTS.



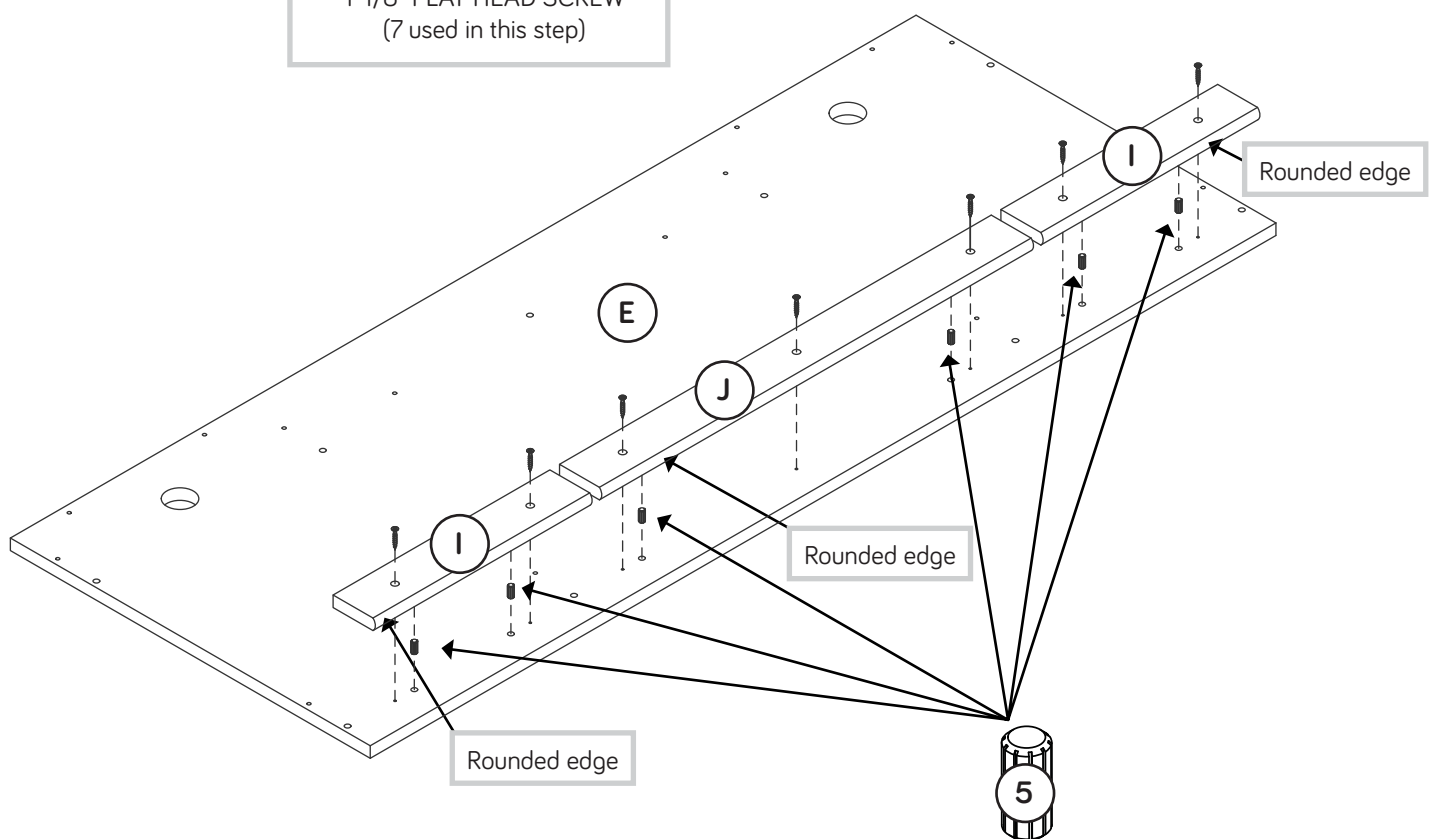
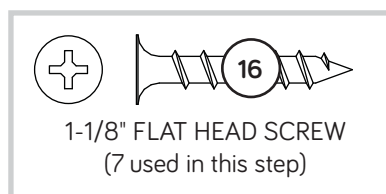
Step 21

- Push fourteen LARGE HIDDEN CAMS (1) into the ENDS (A and B), UPRIGHTS (C and D), BACKS (F), and MODESTY PANEL (G).



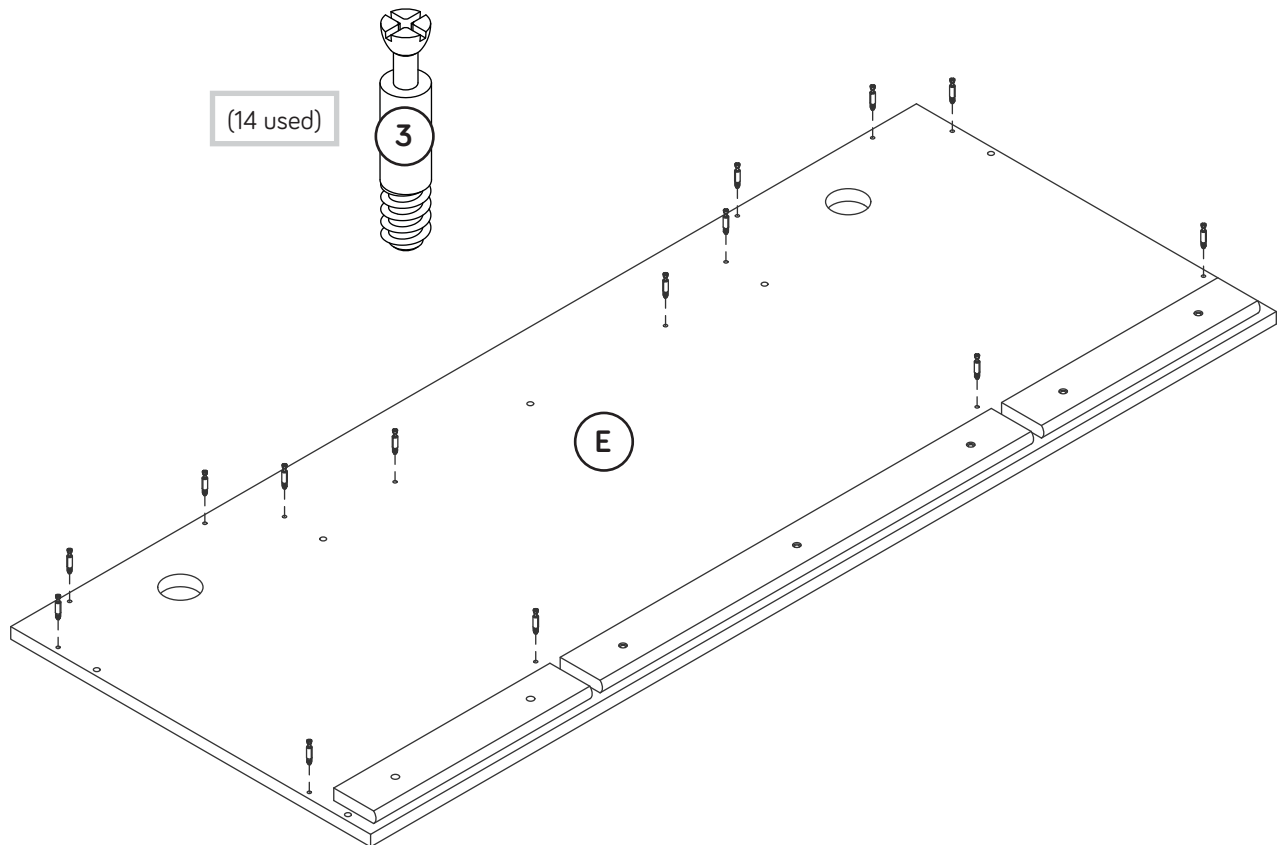
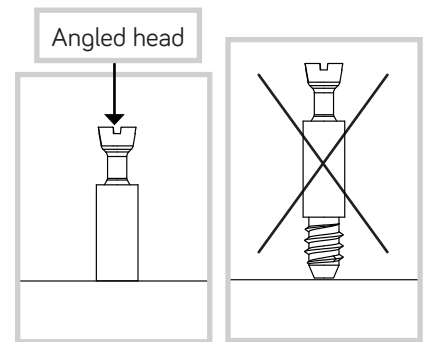
Step 22

- ✚ Push six SHORT WOOD DOWELS (5) into the TOP (E).
- ✚ Fasten the TOP MOLDINGS (I and J) to the TOP (E). Use seven 1-1/8" FLAT HEAD SCREWS (16).
- ✚ **NOTE:** You may want to leave the screws slightly loose so the TOP will fasten easier in step 24.
- ✚ **NOTE:** Be sure the WOOD DOWELS in the TOP insert into the holes in the TOP MOLDINGS.



Step 23

Turn fourteen ANGLED HEAD CAM SCREWS (3) into the TOP (E).

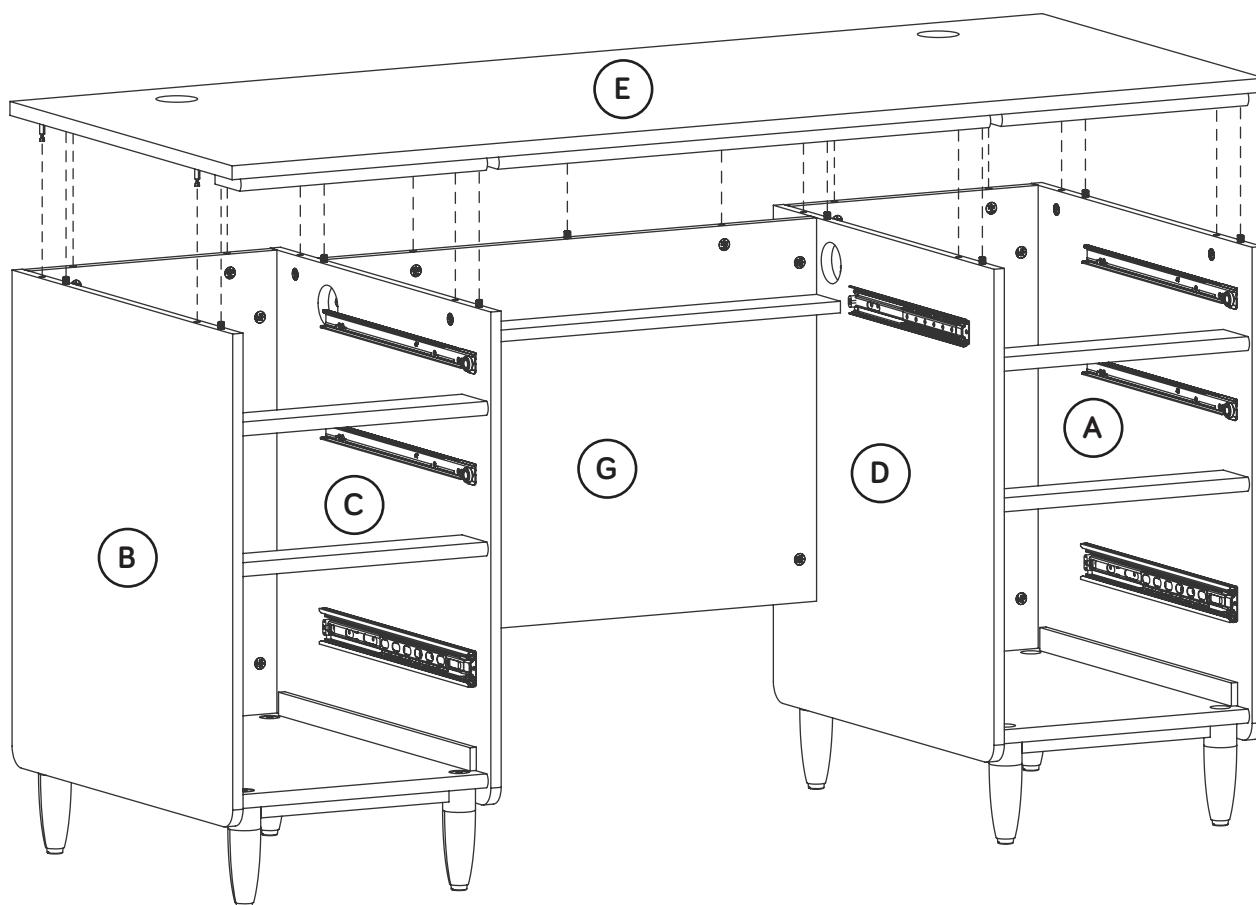
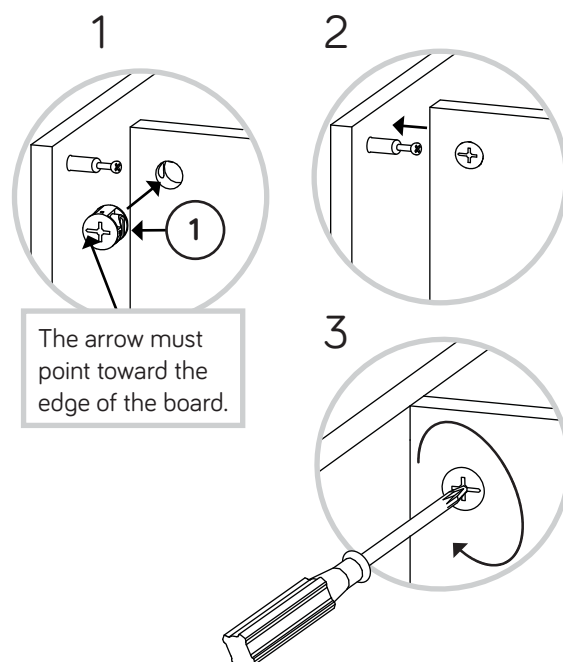


Step 24

Fasten the TOP (E) to the ENDS (A and B), UPRIGHTS (C and D), and MODESTY PANEL (G). Tighten fourteen LARGE HIDDEN CAMS (1).

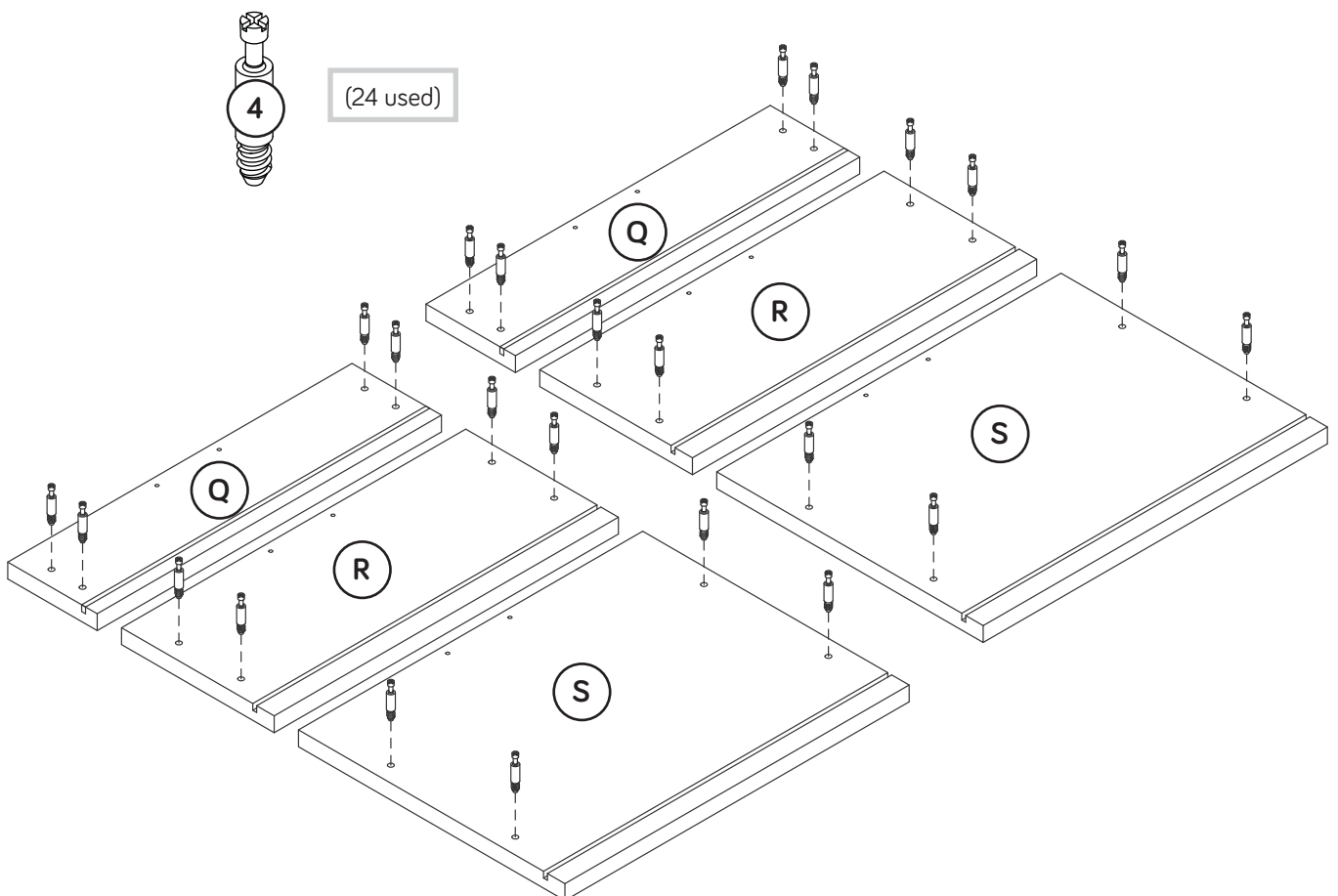
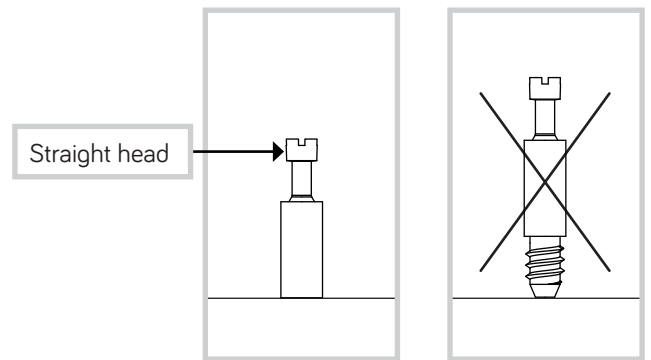
NOTE: Be sure the WOOD DOWELS in the ENDS, UPRIGHTS, and MODESTY PANEL insert into the holes in the TOP.

Tighten the SCREWS in the TOP MOLDINGS.



Step 25

- Turn twenty-four STRAIGHT HEAD CAM SCREWS (4) into the DRAWER FRONTS (Q, R, and S).



Step 26

1

The arrow must point toward the edge of the board.

2

➤ Push four SMALL HIDDEN CAMS (2) into the SMALL DRAWER SIDES (T and V).

➤ Fasten the SMALL DRAWER SIDES (T and V) to the SMALL DRAWER FRONT (Q). Tighten four SMALL HIDDEN CAMS.

➤ Slide the DRAWER BOTTOM (CC) into the grooves in the SMALL DRAWER SIDES (T and V) and DRAWER FRONT (Q).

3

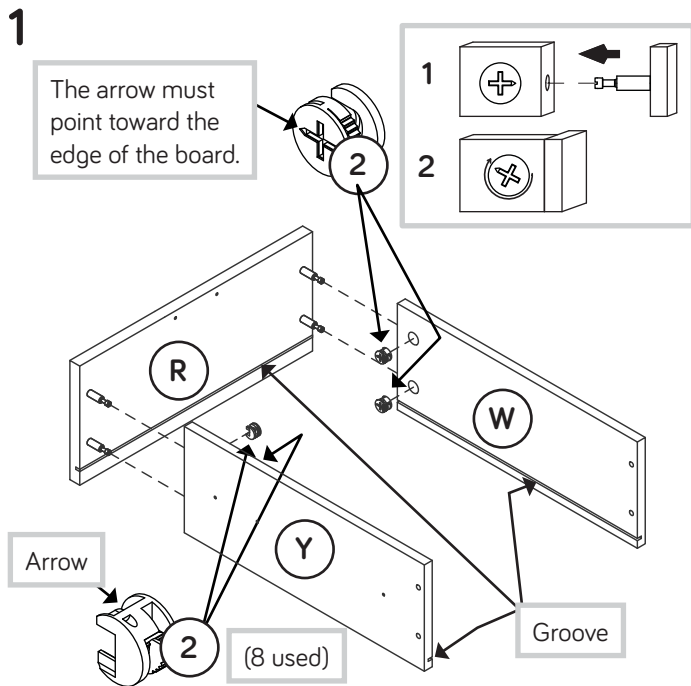
Be sure the DRAWER BOTTOM inserts into the DRAWER BACK groove.

➤ Fasten the SMALL DRAWER BACK (U) to the SMALL DRAWER SIDES (T and V). Use four 1-1/2" FLAT HEAD SCREWS (15).

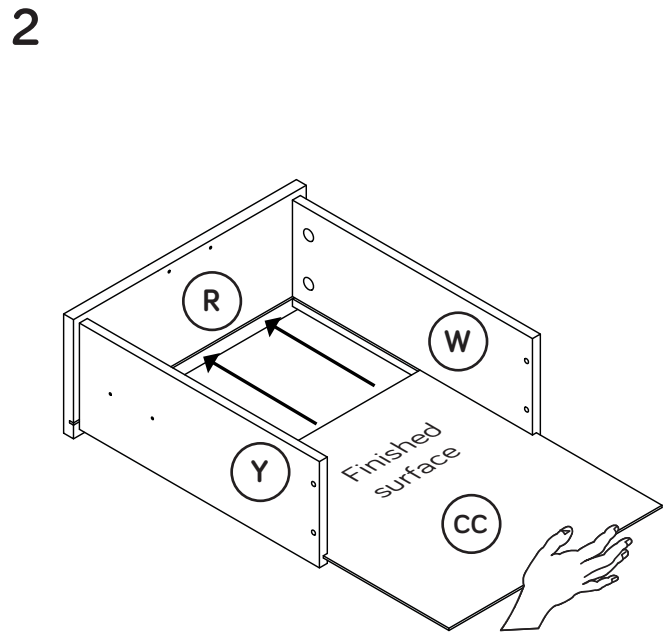
➤ NOTE: Be sure the DRAWER BOTTOM (CC) inserts into the groove of the SMALL DRAWER BACK (U).

➤ Repeat this step for the other small drawer.

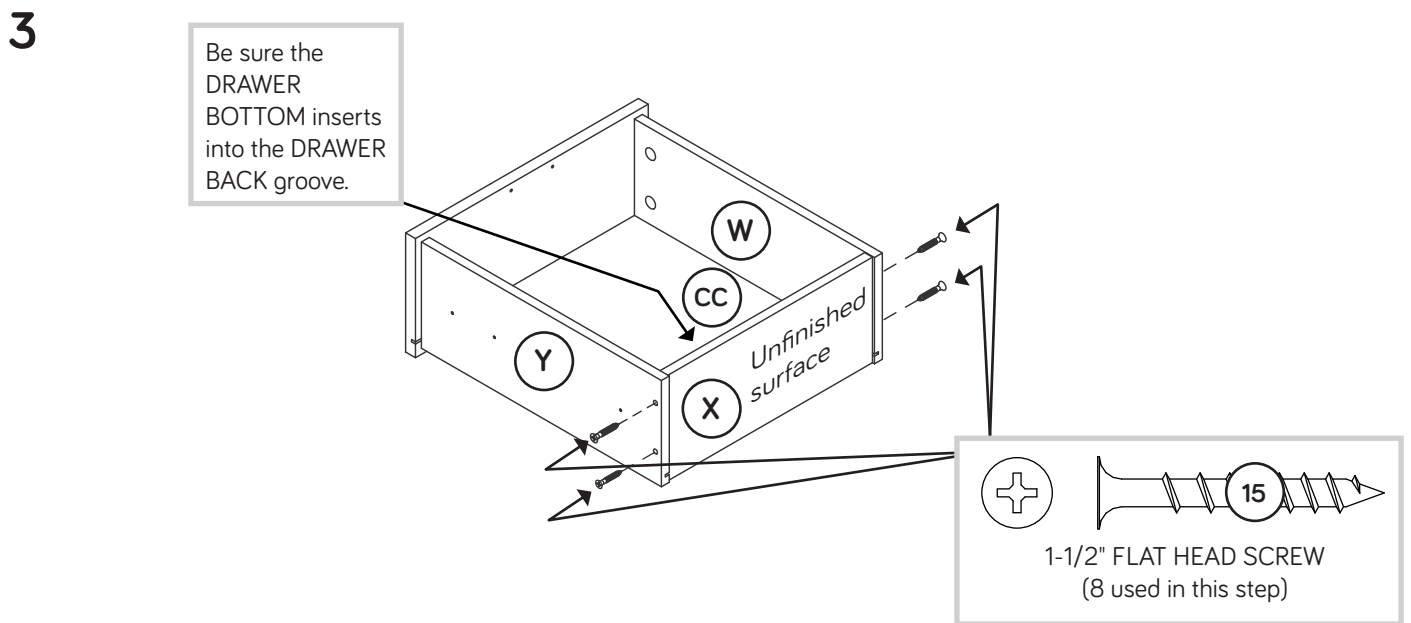
Step 27



- ✚ Push four SMALL HIDDEN CAMS (2) into the DRAWER SIDES (W and Y).
- ✚ Fasten the DRAWER SIDES (W and Y) to the DRAWER FRONT (R). Tighten four SMALL HIDDEN CAMS.

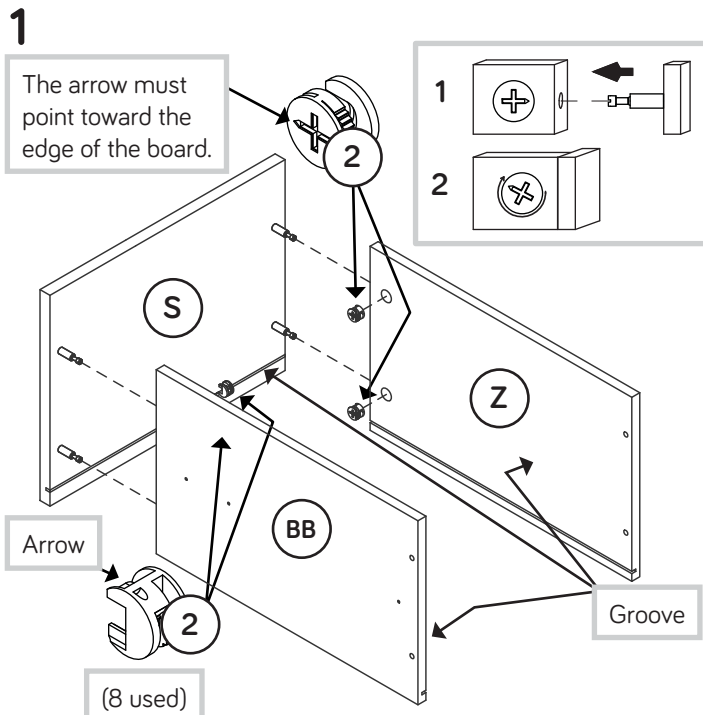


- ✚ Slide the DRAWER BOTTOM (CC) into the grooves in the DRAWER SIDES (W and Y) and DRAWER FRONT (R).

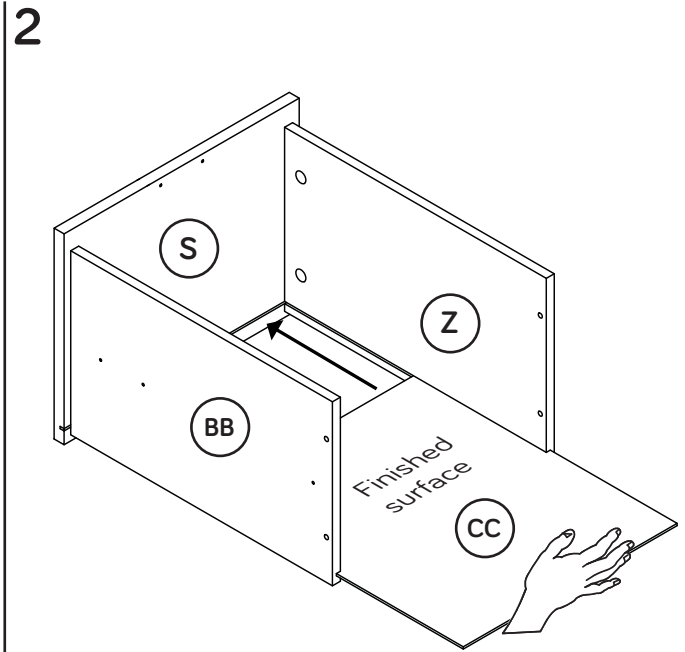


- ✚ Fasten the DRAWER BACK (X) to the DRAWER SIDES (W and Y). Use four 1-1/2" FLAT HEAD SCREWS (15).
- ✚ NOTE: Be sure the DRAWER BOTTOM (CC) inserts into the groove of the DRAWER BACK (X).
- ✚ Repeat this step for the other drawer.

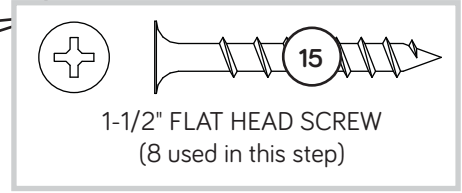
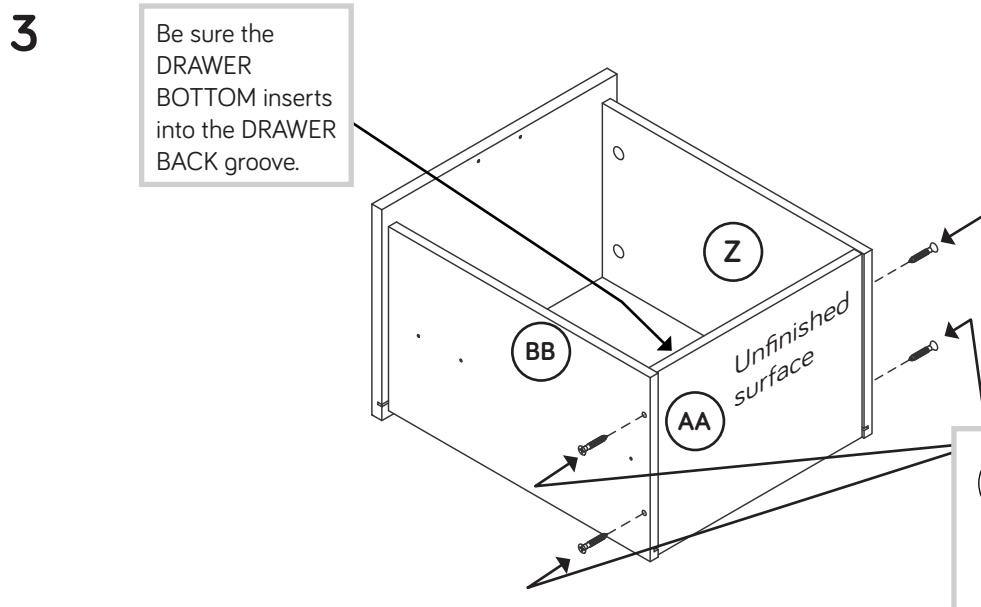
Step 28



- ✦ Push four SMALL HIDDEN CAMS (2) into the LARGE DRAWER SIDES (Z and BB).
- ✦ Fasten the LARGE DRAWER SIDES (Z and BB) to the LARGE DRAWER FRONT (S). Tighten four SMALL HIDDEN CAMS.



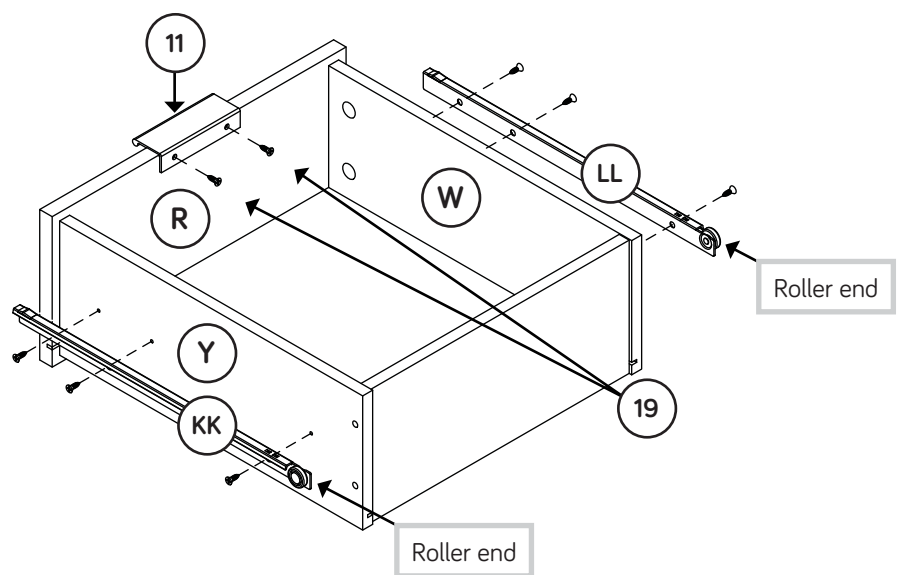
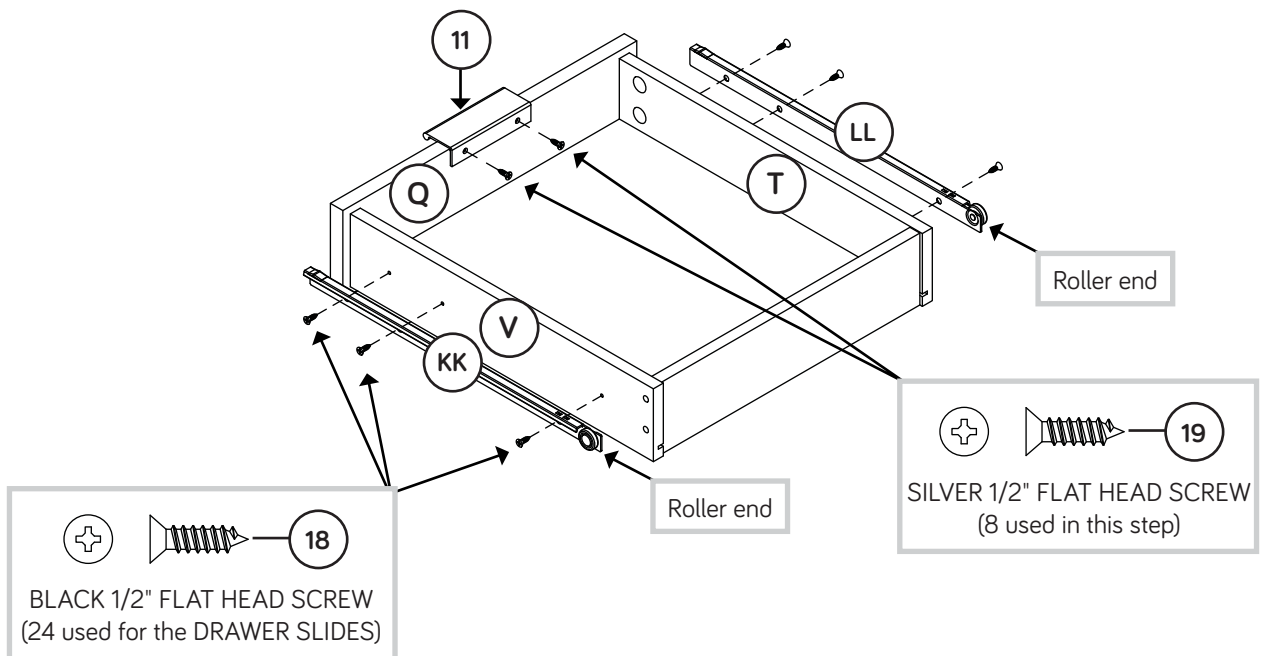
- ✦ Slide the DRAWER BOTTOM (CC) into the grooves in the LARGE DRAWER SIDES (Z and BB) and LARGE DRAWER FRONT (S).



- ✦ Fasten the LARGE DRAWER BACK (AA) to the LARGE DRAWER SIDES (Z and BB). Use four 1-1/2" FLAT HEAD SCREWS (15).
- ✦ **NOTE:** Be sure the DRAWER BOTTOM (CC) inserts into the groove of the LARGE DRAWER BACK (AA).
- ✦ Repeat this step for the other large drawer.

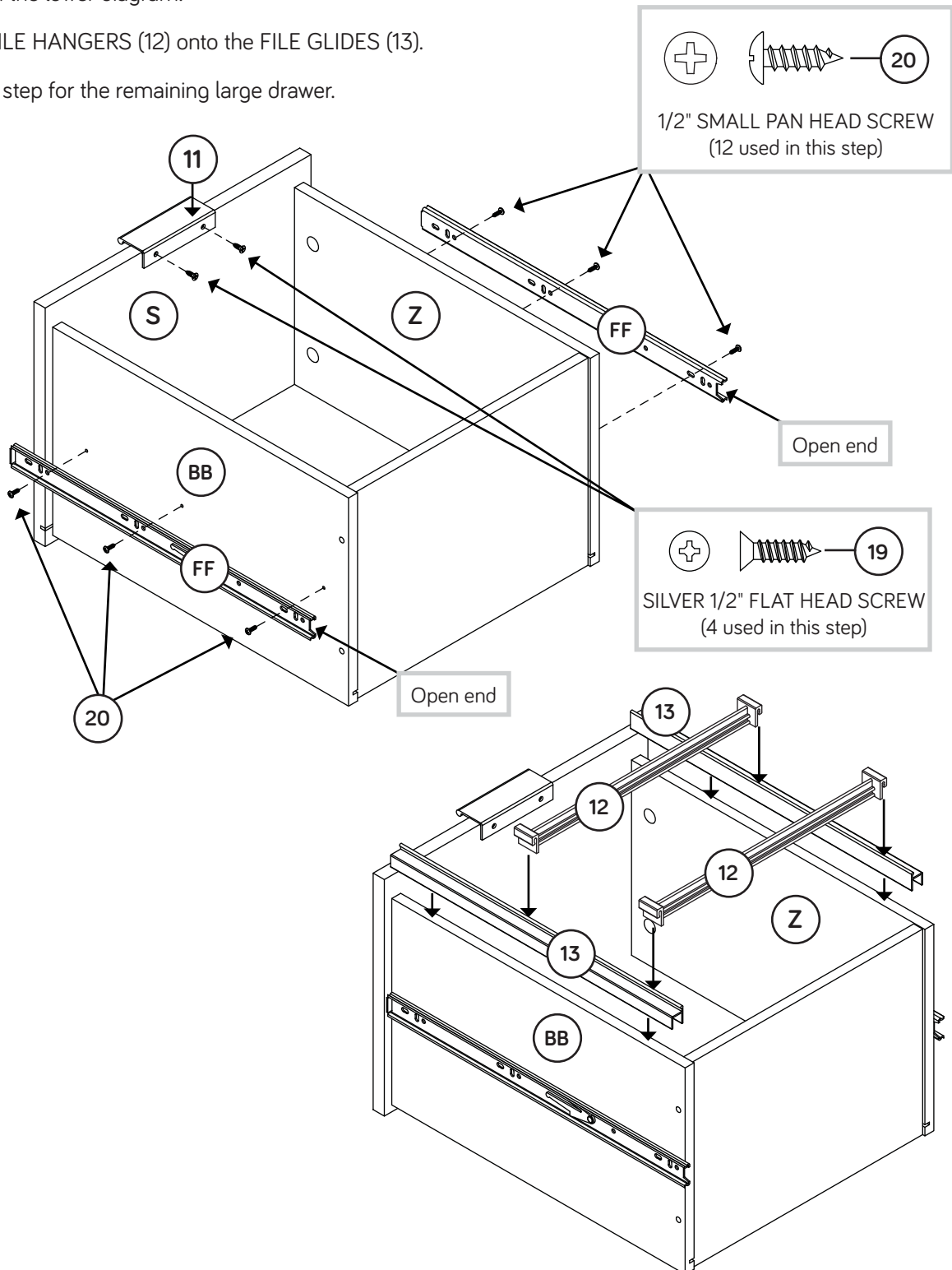
Step 29

- ✚ Fasten a PULL (11) to each DRAWER FRONT (Q and R). Use four SILVER 1/2" FLAT HEAD SCREWS (19).
- ✚ Fasten the RIGHT DRAWER SLIDES (KK) to the RIGHT DRAWER SIDES (V and Y). Use six BLACK 1/2" FLAT HEAD SCREWS (18).
- ✚ Fasten the LEFT DRAWER SLIDES (LL) to the LEFT DRAWER SIDES (T and W). Use six BLACK 1/2" FLAT HEAD SCREWS (18).
- ✚ Repeat this step for the remaining small drawer and drawer.



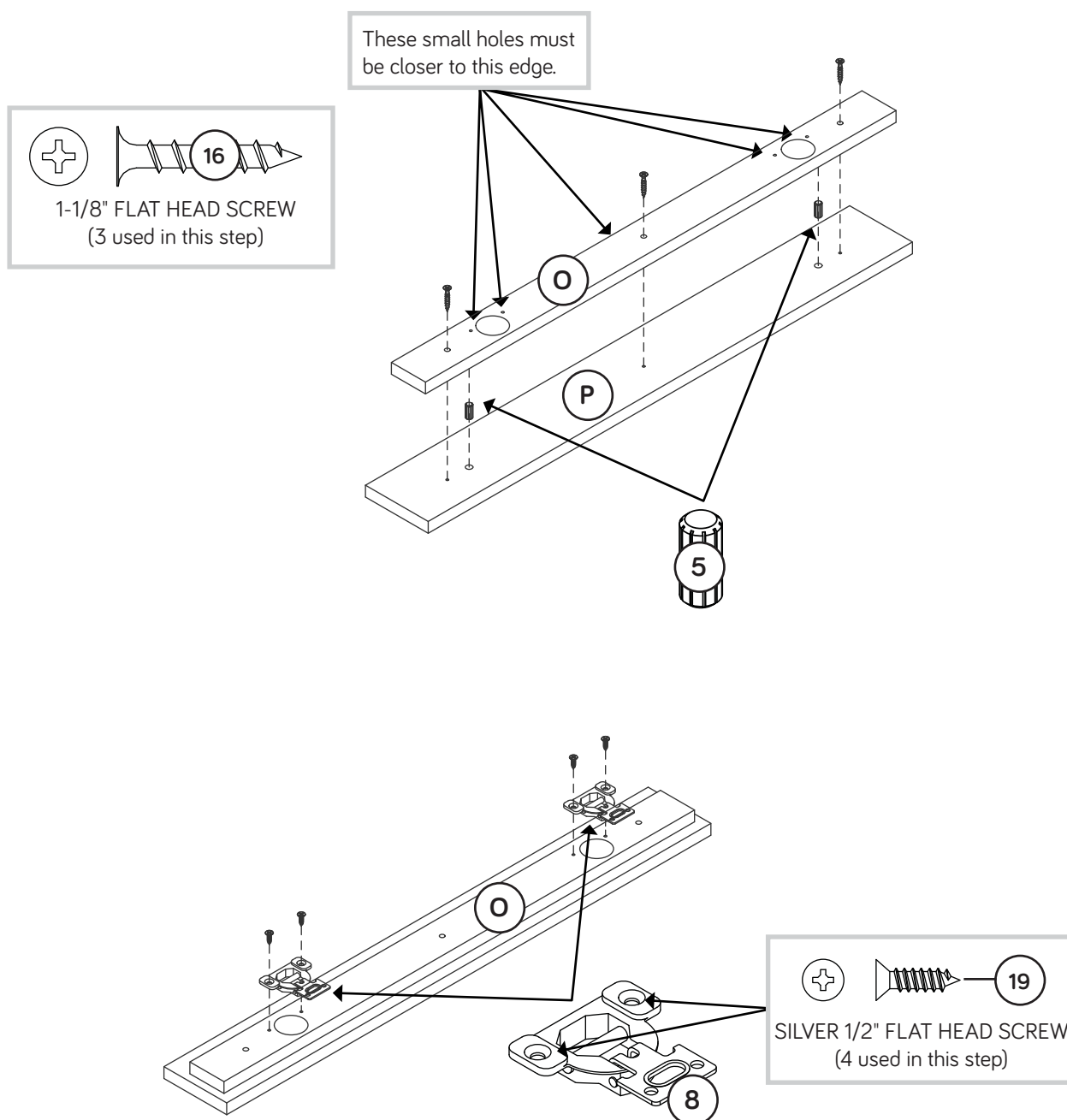
Step 30

- Fasten a PULL (11) to the LARGE DRAWER FRONT (S). Use two SILVER 1/2" FLAT HEAD SCREWS (19) as shown in the upper diagram.
- Fasten the LONG EXTENSION SLIDES (FF) to the LARGE DRAWER SIDES (Z and BB). Use six 1/2" SMALL PAN HEAD SCREWS (20).
- Push two FILE GLIDES (13) onto the LARGE DRAWER SIDES (Z and BB) as shown in the lower diagram.
- Push two FILE HANGERS (12) onto the FILE GLIDES (13).
- Repeat this step for the remaining large drawer.



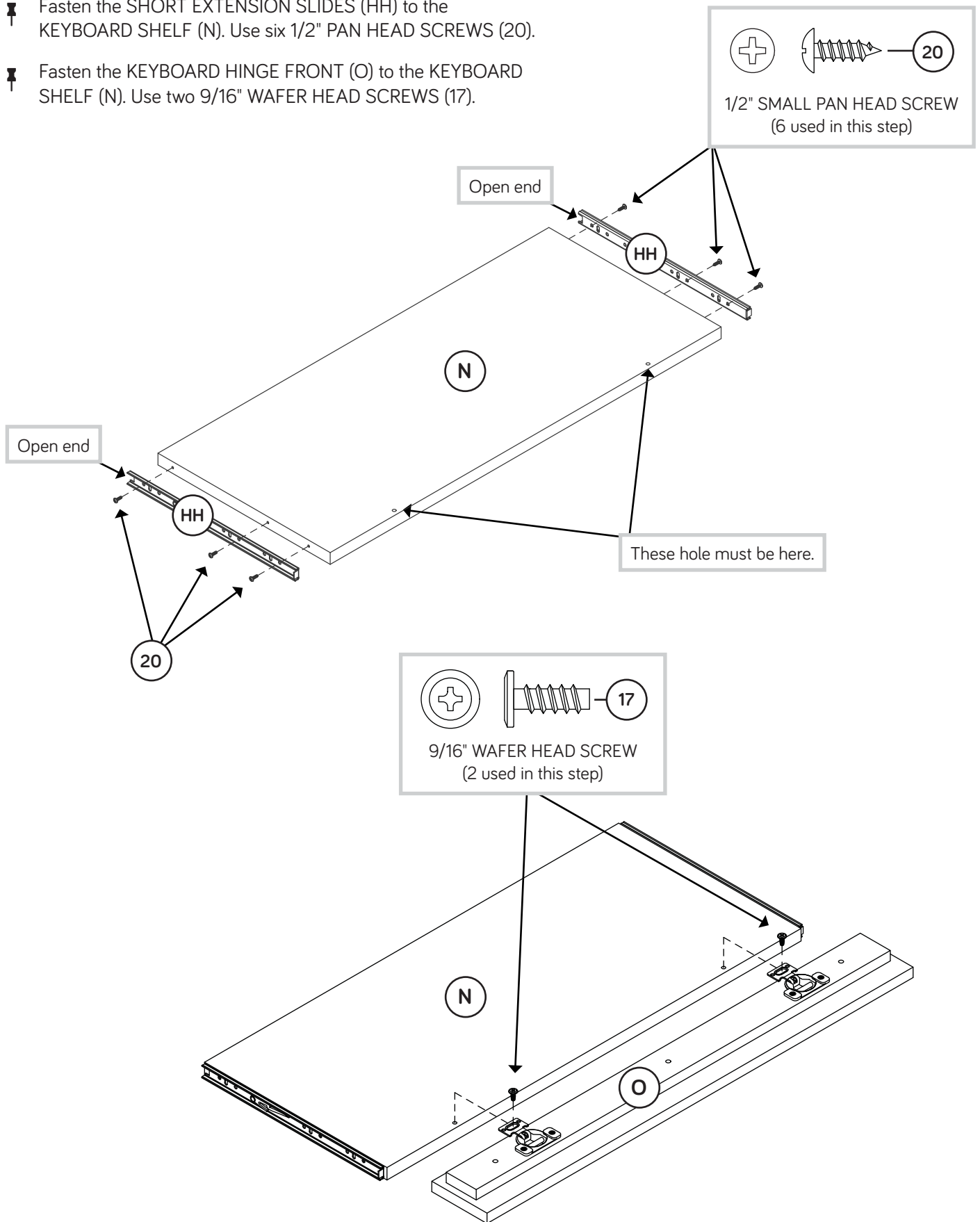
Step 31

- ✚ Push two SHORT WOOD DOWELS (5) into the KEYBOARD FRONT (P) as shown in the upper diagram.
- ✚ Fasten the KEYBOARD HINGE FRONT (O) to the KEYBOARD FRONT (P). Use three 1-1/8" FLAT HEAD SCREWS (16).
- ✚ Fasten the HINGES (8) to the KEYBOARD HINGE FRONT (O). Use four SILVER 1/2" FLAT HEAD SCREWS (19) as shown in the lower diagram.



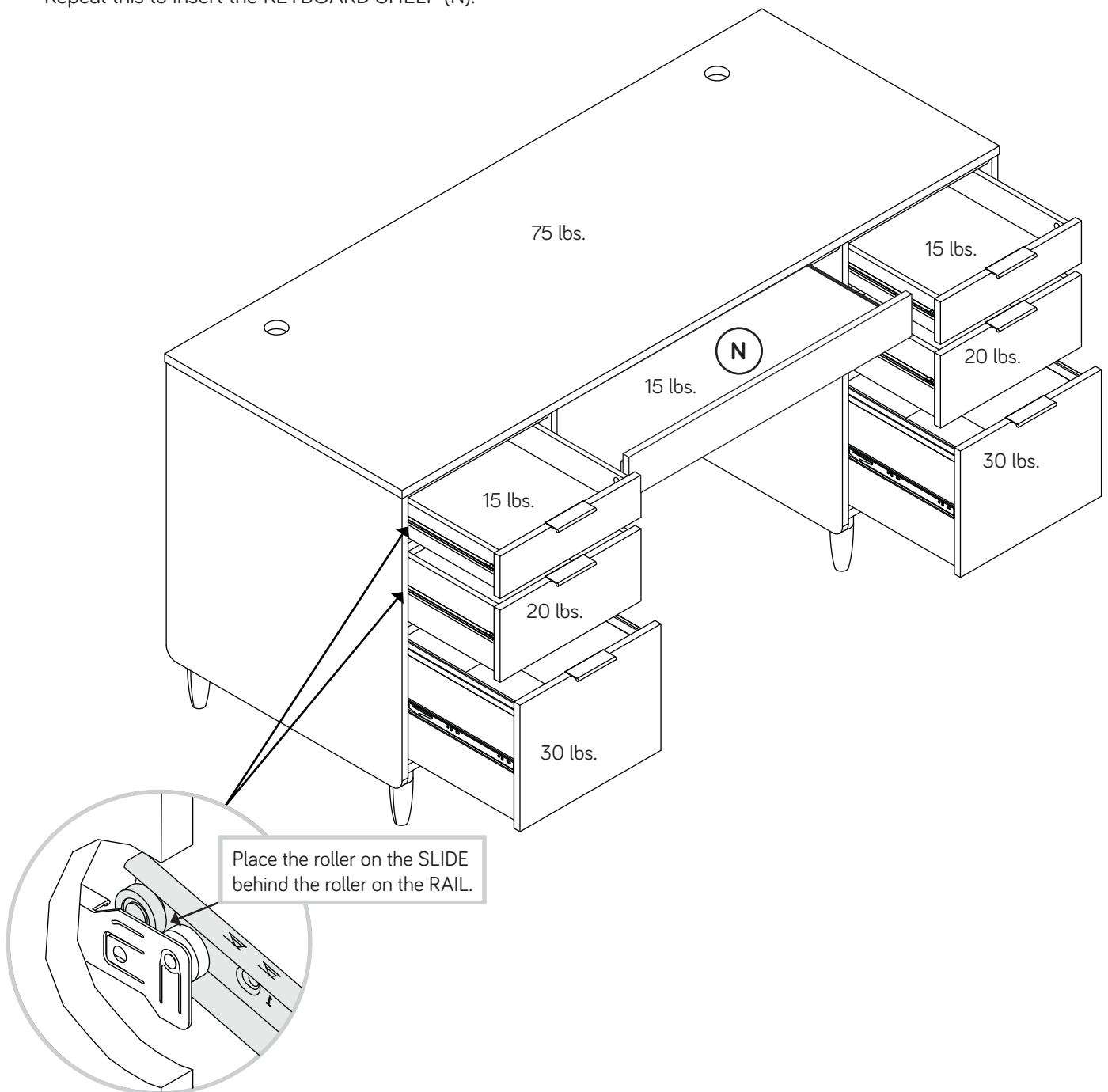
Step 32

- Fasten the SHORT EXTENSION SLIDES (HH) to the KEYBOARD SHELF (N). Use six 1/2" PAN HEAD SCREWS (20).
- Fasten the KEYBOARD HINGE FRONT (O) to the KEYBOARD SHELF (N). Use two 9/16" WAFER HEAD SCREWS (17).



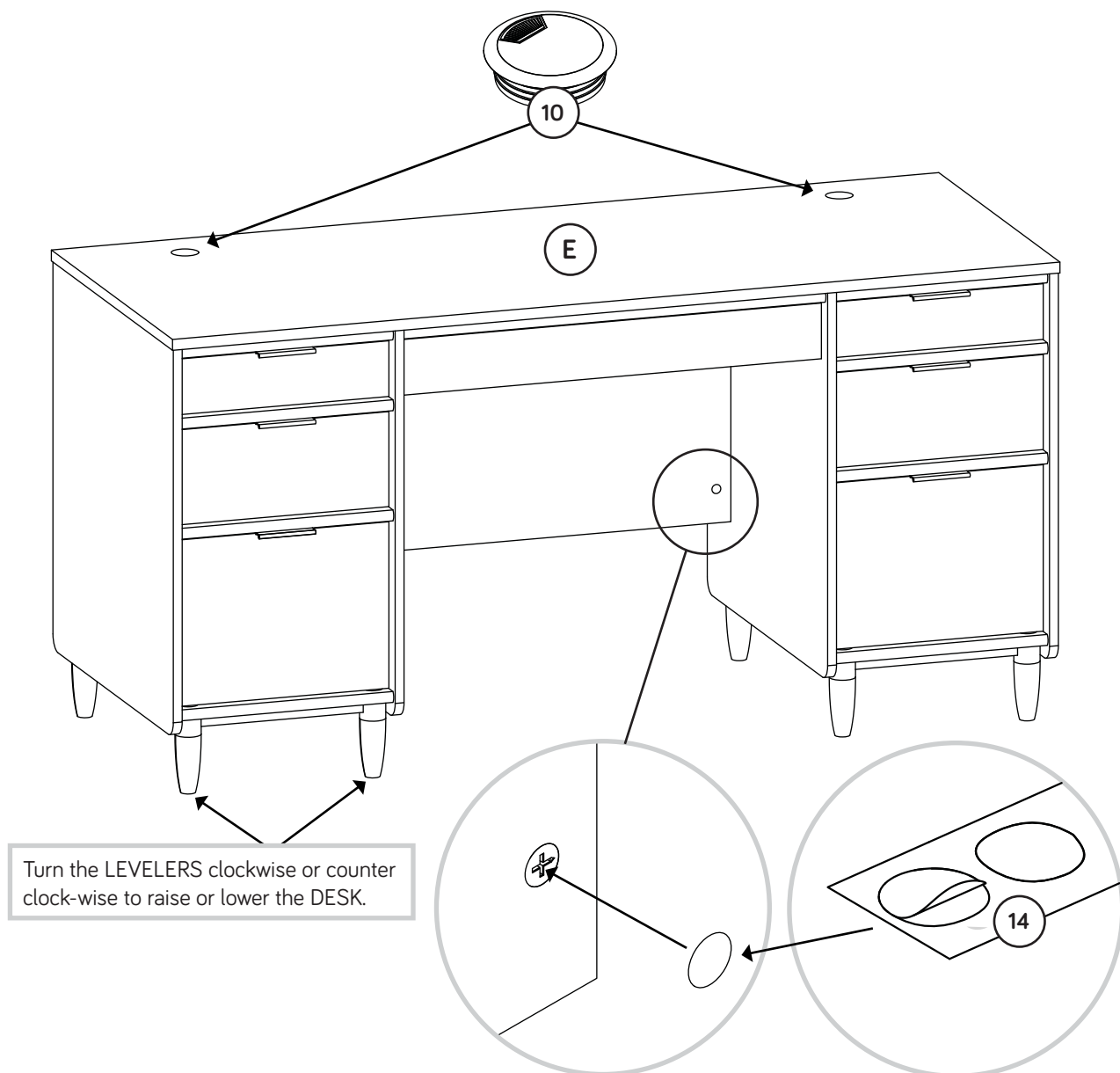
Step 33

- ✦ To insert the four smaller drawers into your unit, tip the front of the drawers down and drop the rollers on the drawers behind the rollers on the unit. Lift the front of the drawers up and slide them into the unit.
- ✦ To insert the large drawers into your unit, line up the EXTENSION SLIDES on the drawer with the EXTENSION RAILS on the unit and push the drawer into the unit until the drawer is fully inserted. The drawers will push in hard until it is all the way in, then it will slide in and out easier. Repeat this to insert the KEYBOARD SHELF (N).



Step 34

- ✂ Peel a CAM COVER from the CAM COVER CARD (14) and stick one onto each visible HIDDEN CAM.
- ✂ NOTE: There are HIDDEN CAMS inside the drawers which you may want to cover.
- ✂ Push two GROMMETS and CAPS (10) into the large holes in the TOP (E).
- ✂ NOTE: To raise a corner of the desk, turn a LEVELER counter-clockwise. To lower a corner of the desk, turn the LEVELER clockwise.
- ✂ NOTE: Please read the back pages of the instruction booklet for important safety information.
- ✂ This completes assembly. Clean with your favorite furniture polish or a damp cloth. Wipe dry.



⚠ WARNING

Please use your furniture correctly and safely. Improper use can cause safety hazards, or damage to your furniture or household items. ***Carefully read the following chart.***

Look out for:	What can happen:	How to avoid the problem:
<ul style="list-style-type: none"> Overloaded shelves and drawers. Improper loading can cause the product to be top-heavy. 	<ul style="list-style-type: none"> Risk of injury. Top-heavy furniture can tip over. Overloaded shelves and drawers can break. 	<ul style="list-style-type: none"> Never exceed the weight limits shown in the instructions. Work from bottom to top when loading shelves and drawers. Place the heavier items on the lower shelves or in lower drawers.
<ul style="list-style-type: none"> Improperly moving furniture that is not designed and equipped with casters. 	<ul style="list-style-type: none"> Furniture can tip over or break if improperly moved. Physical injury. Furniture can be very heavy. Breakage of tops - particularly with double pedestal furniture (drawers at both ends). 	<ul style="list-style-type: none"> Unload shelves and drawers from top to bottom before moving the unit. Do not push furniture, especially on a carpeted floor. Have a friend help you lift the item and set it in place. Provide support to the center section of the top when lifting the furniture.
<ul style="list-style-type: none"> Placing TVs on furniture items that are not designed to support a television is hazardous. 	<ul style="list-style-type: none"> Risk of injury or death. TVs can be very heavy. Plus the weight and location of the picture tube tends to make TVs unbalanced and prone to tipping forward. 	<ul style="list-style-type: none"> This product is not designed to support a television.