



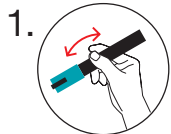
**PAINT IN A PEN
CAN BE USED ON
MOST SURFACES**

8 POSCA PROJECTS

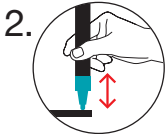
**FIX YOUR DESIGNS - WE SHOW YOU HOW
MAKE, CREATE, DRAW AND DECORATE WITH POSCA
WATER-BASED PAINT PENS.**



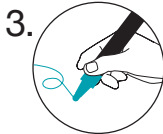
START USING POSCA IN 3 SIMPLE STEPS



1. Shake the marker vigorously, with the cap on.



2. Press the tip down several times to start the paint flowing.



3. Express your creativity freely.

Create art!



Get crafting!



You can use posca on pebbles. Draw on direct and varnish.

Customise everyday objects!



**PCF-350
BRUSH**
1 - 10 mm



**PC-1MR
ULTRA-FINE**
0.7 mm



**PC-1M
EXTRA-FINE**
0.7 mm



**PC-3M
FINE**
0.9-1.3 mm



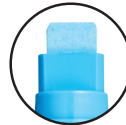
**PC-5M
MEDIUM**
1.8-2.5 mm



**PC-7M
BULLET TIP**
4.5-5.5 mm



**PC-8K
CHISEL TIP**
8 mm



**PC-17K
EXTRA BROAD**
15 mm

8
NIB SIZES



55
COLOURS



Water-soluble; use a brush to create washes



Can be layered



Mix to create custom colours



You can reverse the nibs on 3M and 5M pens

HOW TO FIX ON DIFFERENT SURFACES

We use a spray on lacquer varnish for an even finish.



Paper/Cardboard/Canvas

TO FIX

POSCA Paint will absorb into the paper and canvas making it permanent. You can varnish it if you want a matt or gloss finish.

Stone

TO FIX



Spray with clear varnish.

Textile

TO FIX



POSCA Paint will absorb into the fabric so will not wash out. Iron on reverse to secure colour hold. Colour will fade after 20+ washes but can be freshened up if reapplied.

Wood

TO FIX



Spray with clear varnish.



Plastic

TO FIX



Spray with clear varnish.

Metal

TO FIX



Spray with clear varnish.

Ceramic - Porcelain

TO FIX



CERAMIC
- BAKE IN THE OVEN AT 220°C FOR 45 MINUTES
- SPRAY WITH CLEAR VARNISH



PORCELAIN
- BAKE IN THE OVEN AT 160°C FOR 45 MINUTES
- SPRAY WITH CLEAR VARNISH

Glass

TO FIX



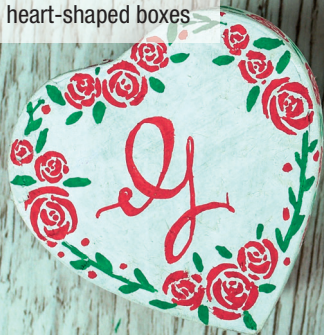
- BAKE IN THE OVEN AT 160°C FOR 45 MINUTES
- SPRAY WITH CLEAR VARNISH

HAND WASH ONLY. NOT RECOMMENDED FOR DISHWASHER USE.

PAINT FAB FLORALS!

Card & Paper make:

Personalised heart-shaped boxes



PREP: Cover lidded cardboard gift boxes with a white PC-8k Posca, leave to dry.
CREATE: To make the art deco rose motif seen on the lid and sides of the box, use PC-1M Posca's to draw three little dashes to create a centre, add larger marks around the three dashes, then make another layer of strokes. Fill these out and shape each mark to create softer curves. Add leaves and buds.
FINISH: In pencil, sketch your chosen initial in the middle of the shape. Use your PC-1M Posca, or if you want to go the extra mile, a PCF-350 Posca, to go over the pencil design, filling in areas as you go along.

SHAPE: Using your PC-5M Posca, make rough flower shapes in bright colours as shown. To make the art deco rose motif follow step two for the heart shaped box shown above. Once you're happy with the flowers add leaves, stems and buds as pictured.
DETAIL: Once all the floral shapes have dried use a contrasting Posca colour with PC-3M and PC-1M to add details such as flower centres, highlights and veins in the leaves as shown. Be gentle when layering colour as you don't want to scratch the first layer of paint.
FINISH & FIX: Once you are happy with the design, spray with clear varnish.

Metal make:

Flower-themed water bottle



TOP TIP
 Have a scrap of paper nearby so you can re-prime your pen with fresh colour as you work.

DECORATE WITH BIRDIE MOTIFS

Wooden make:

Charming bird-box



PREP: Cover the bird box panels with a white PC-17K Posca, leave to dry.
DRAW: Work out your design on tracing paper. Trace some bird images (you'll find lots online) and simplify so they are made up of simple blocks of colour as we have done here. Go over the back of your design with a pencil, tape onto the bird box panels and transfer the design.
APPLY: Use your PC-3M Posca to go over the traced design, filling in areas as you go along. When the larger areas are dry, apply details and highlights in contrasting PC-1M Posca colours. Using PC-3M Posca, draw simple branch and leaf shapes around the bird motifs. If you have a flat-pack box you can now assemble it.
FINISH & FIX: Spray or brush on clear varnish.

Fabric make:

Chirpy purses



DRAW: Using a pencil, create your design directly onto the canvas purse. To make the bird, draw a very simple 'S'-shaped bird body and create curved shapes for its tail as shown. 'Frame' the bird with simple branches, leaves and flower shapes.
FILL: Use both PC-1M and PC-3M Glitter Posca to go over the pencil design, filling in areas as you go along. When the larger areas are dry, apply details in contrasting PC-1M Posca colours.
FINISH & FIX: Turn inside-out and iron.

TOP TIP

Wait for one layer to dry then overlay with another colour to embellish!

EMBELLISH WITH SIMPLE SHAPES

Ceramic make:
Scandi-style leaf mugs



DRAW: With a PC-3M Posca, draw simple leaf outlines directly onto the mugs.
DESIGN: Make a central line down the shape. From that line, draw diagonal lines to the edge of the leaf. Fill in the spaces in-between the lines with dots, zigzags and solid colour.
FINISH & FIX: Bake in the oven at 160°C for 45 minutes then spray with clear varnish.

TOP TIP

Remember, you can reverse the tip on 3M and 5M markers.

MAKE COLOURFUL CONTAINERS

Glass make:
Vibrant votives



DRAW: Work out your design on tracing paper, cut to size and pop underneath the glass. Tape to secure.
APPLY: Use brightly coloured PC-1M Posca pens to trace the design directly onto the glass.
FINISH & FIX: When finished, remove the paper template, bake in the oven at 160°C for 45 minutes then spray with clear varnish.

TOP TIP

If you don't bake it, you can remove the paint from glass. So keep a packet of wet wipes and a roll of dry kitchen roll handy to wipe away any mistakes

Terracotta make:
Folky themed plant pots



DRAW: Work out your design on tracing paper. Use a pencil to draw an arrangement of different-sized leaves. Use the methods described in the mug project above to add interest to the leaves. Go over the back of your design with a pencil, tape onto the pot and transfer the design.
FILL: Use a PC-1MR white Posca to go over the traced design, filling in areas as you go along. Draw simple flowers around the leaves to fill in.
FINISH & FIX: Bake in the oven at 220°C for 45 minutes then spray with clear varnish.

TOP TIP

Made a mistake? Just overlay to correct

Plastic make:
Arty toolbox



DRAW: Work out your design on tracing paper, cut to size and pop underneath the clear plastic. Tape to secure.
APPLY: Use brightly coloured PC-1M Posca pens to trace the design directly onto the box surface.
FINISH & FIX: Spray or brush on clear varnish.

TOP TIP

Why not try these designs large scale on canvas to create a stunning piece of wall art?

PCF-350 TO PAINT, DRAW, COLOUR, DECORATE,
WRITE, MARK & CALLIGRAPH.

BRUSH

1-10 mm



10 COLOURS



Innovative and expressive, the brush tip PCF-350 reaches areas that other markers cannot. Painters will enjoy the pleasure of a brush without its disadvantages. Beginners and children can master painterly basics with ease. It's also ideal for brush script!

PC-1MR TO PAINT, DRAW, COLOUR, DECORATE,
WRITE & MARK.

ULTRA FINE

0.7 mm



16 COLOURS



Slim and smooth, the PC-1MR is for people who love precision. The ultra-fine tip has the same qualities as a paint marker but with the consistent, fine line you get with a pen. Available in a wide selection of colours, it's perfect for defined outlines, delicate detail and neat handwriting.

PC-1M TO PAINT, DRAW, COLOUR, DECORATE,
WRITE & MARK.

EXTRA FINE

0.7 mm



22 COLOURS



A brilliant all-rounder the PC-1M's extra-fine bullet tip makes it excellent for fine detail and small projects such as fiddly decorations, card-making or illustration. Hold it straight on for fine dots and lines, use it at an angle to create expressive strokes and to colour-in.

PC-3M TO PAINT, DRAW, COLOUR, DECORATE,
WRITE & MARK.

FINE

0.9 -
1.3 mm



REVERSIBLE TIP

40 COLOURS - REVERSIBLE AND REPLACEABLE TIP



Versatile and vibrant, the PC-3M fine bullet tip is designed for specialists but can be enjoyed by artists, crafters and customisers alike. Its steady line and solid colour gives you the power to customise, create, decorate or mark anything that inspires you.

PC-5M

TO PAINT, DRAW, COLOUR, DECORATE,
WRITE & MARK.

**REVERSIBLE
TIP**

MEDIUM

1.8 -
2.5 mm



39 COLOURS - REVERSIBLE AND REPLACEABLE TIP



An all-round classic, the PC-5M medium bullet tip is the 'multi-purpose' member of the POSCA range. It produces neat and precise lines and is ideal for colouring, the PC-5M is the go-to Posca for both professionals and beginners alike.

PC-7M

TO PAINT, DRAW, COLOUR, DECORATE,
WRITE & MARK.

**BROAD
BULLET
TIP**

4.5-5.5mm



15 COLOURS



The artist's choice, POSCA PC-7M broad bullet tip draws neat curves and covers large surfaces in a large range of colours. Ideal for flat-tints; 'Street Art' and is fab on canvas. This rounded tip is excellent for precision on large art pieces and is great for both pros and novices.

PC-8K

TO PAINT, DRAW, COLOUR, DECORATE,
WRITE & MARK.

**BROAD
CHISEL
TIP**

8 mm



33 COLOURS - REPLACEABLE TIP



Efficient and hard working, the PC-8K's broad chisel tip draws neat curves and covers large surfaces in a large range of colours. Great for flat-tints and a 'Street Art' favourite, it is also fantastic for large italic-style hand-writing and large format work.

PC-17K

TO PAINT, DRAW, COLOUR, DECORATE,
WRITE & MARK.

**EXTRA
BROAD**

15 mm



10 COLOURS



The pro's favourite, the PC-17K extra-broad chisel tip is the go-to maker for professionals and artists when creating large-scale artwork. Designed for experts, its XL size tip is incredible on walls and windows, producing a strong, confident line and vivid colour.

Extra-broad line for wide mark out.

PC-17K



Extra-large
15.0 mm
10 colours

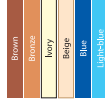
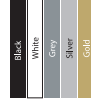


Broad line for eye-catching letters.

PC-8K



Broad
8.0 mm
30 colours

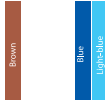


Consistent thick line for surface decoration.

PC-7M



Thick
5.4 x 5.5 mm
15 colours

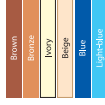


Medium line for general purposes.

PC-5M



Medium
4.8 x 2.2 mm
39 colours



Fine line for grading data.

PC-3M PC-3ML



Fine
0.8 x 1.3 mm
40 colours

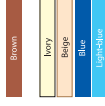
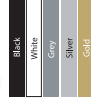


Extra-fine for picture decoration.

PC-1M

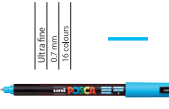


Extra-fine
1 mm
22 colours



Enjoy colourful decoration in any colour and extra-fine line for fine lines.

PC-1MR



Ultra-fine
0.7 mm
16 colours

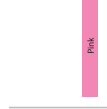
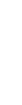
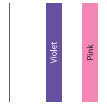
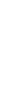
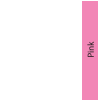


Brush tip designed to remove any other marker colour from the surface.

PCF-350

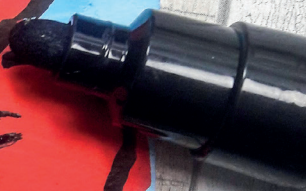


Brush tip
0.1 x 10 mm
10 colours





There's more online!
www.posca.com



uni
MITSUBISHI PENCIL

Mitsubishi Pencil Company
Unit 3, Murdoch Court, Knowlhill
Milton Keynes. MK5 8GH



Posca UK



@uni_posca

SAP CODE - 153610723