





AC1900 Wi-Fi Router


Dual Band | MU-MIMO




Archer C80

 1300 Mbps 5 GHz +
600 Mbps 2.4 GHz†

 4 Antennas for
Superior Coverage†

 Faster Wi-Fi
with MU-MIMO

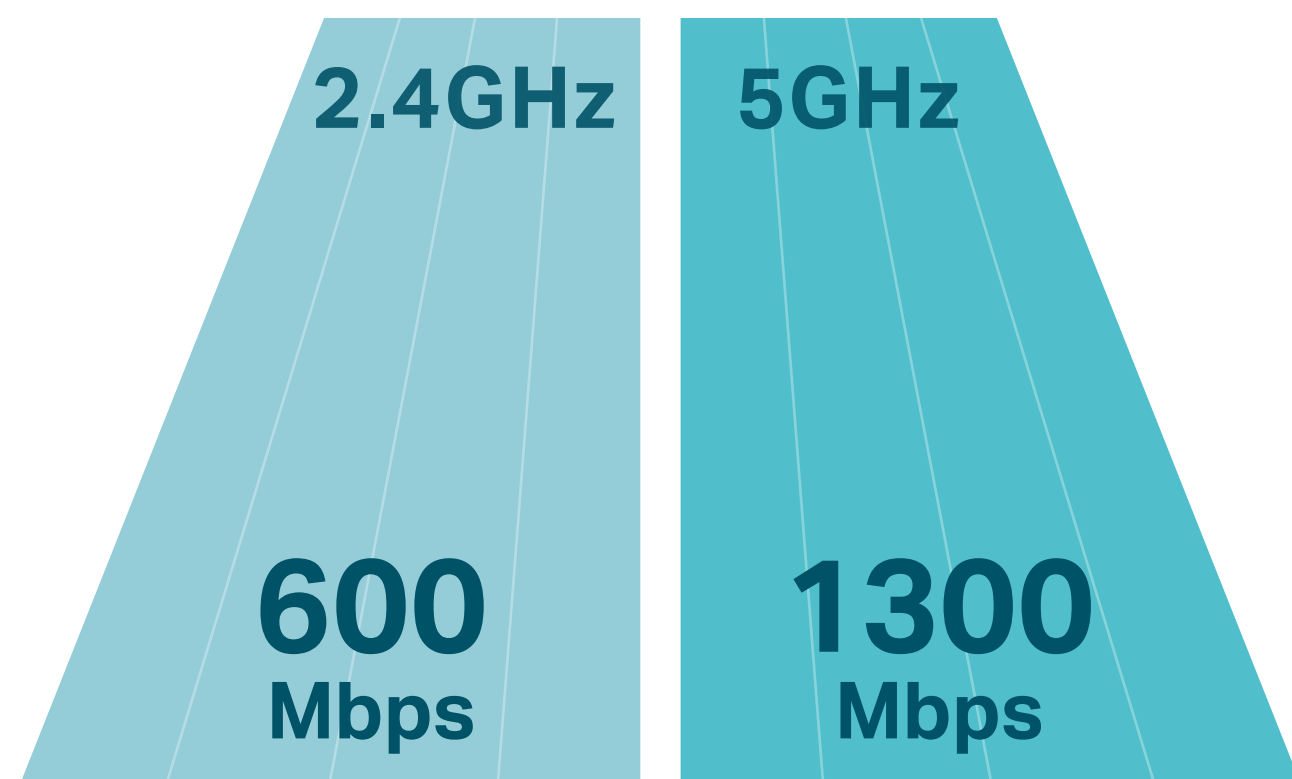
 Smart Connect

 Full Gigabit
Ports

Highlights

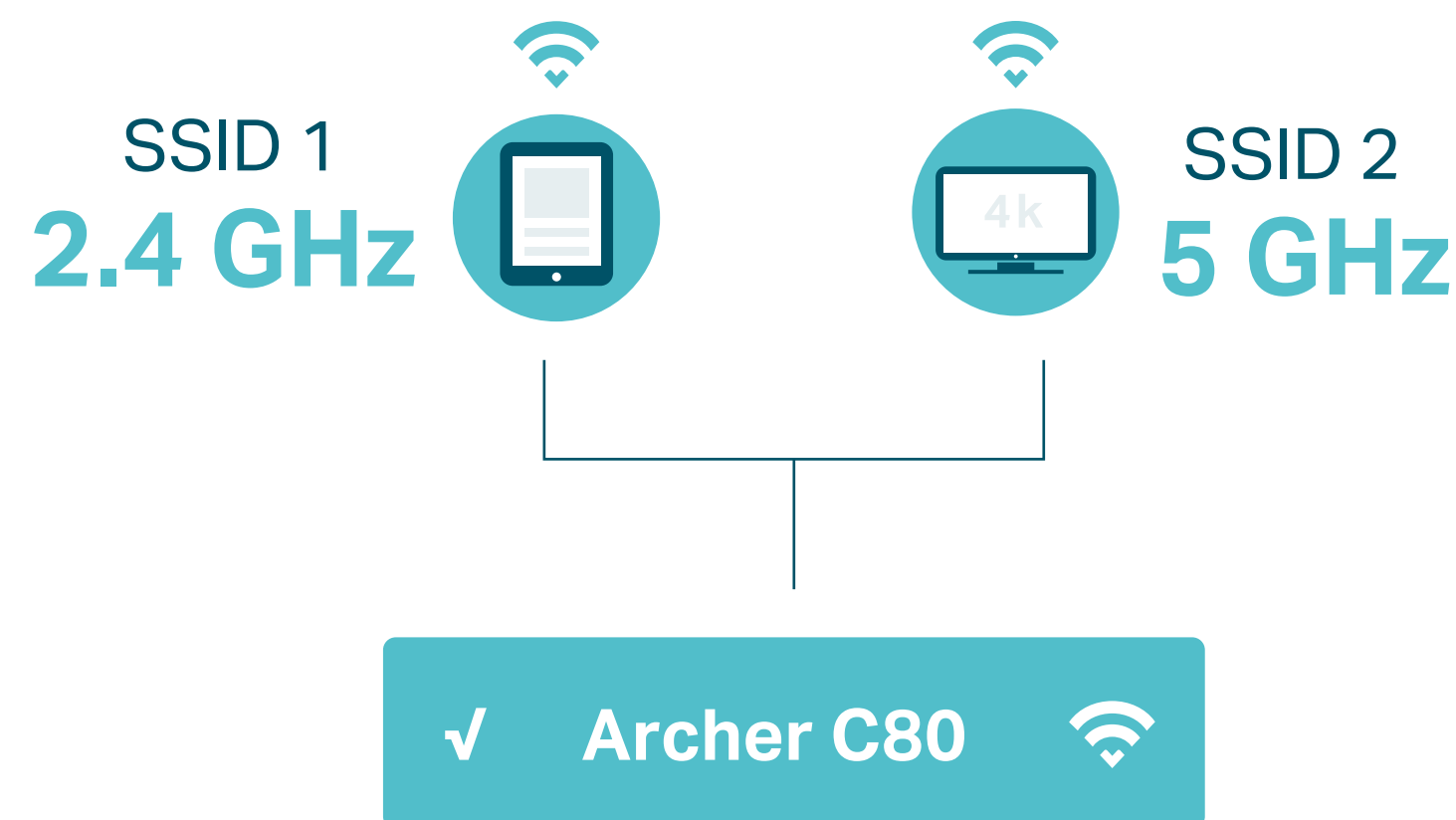
Speeds up to 1900 Mbps

1300 Mbps on the 5 GHz band and 600 Mbps on the 2.4 GHz are ideal for both everyday tasks and lag-free online entertainment. †



Smart Connect

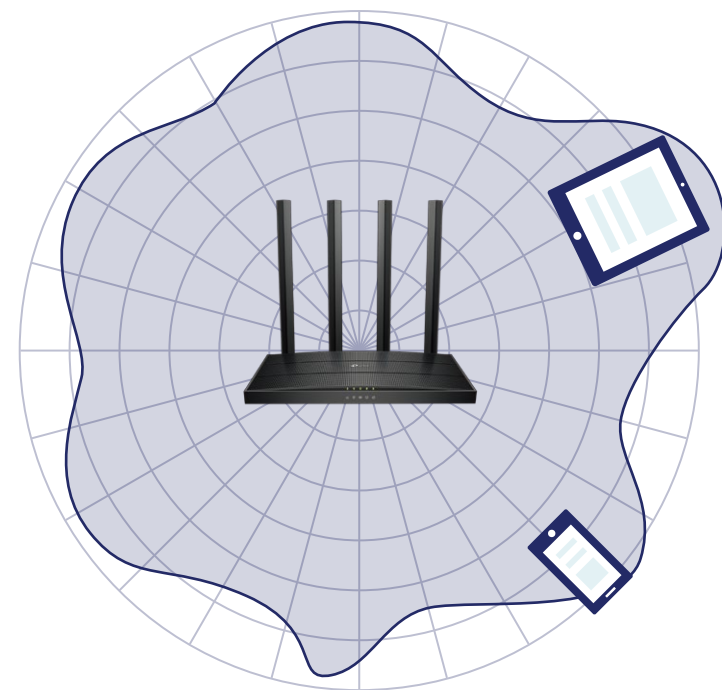
Smart Connect unites 2.4 GHz and 5 GHz band into a single Wi-Fi SSID and helps the router automatically switch each device's connection to the best available Wi-Fi band.



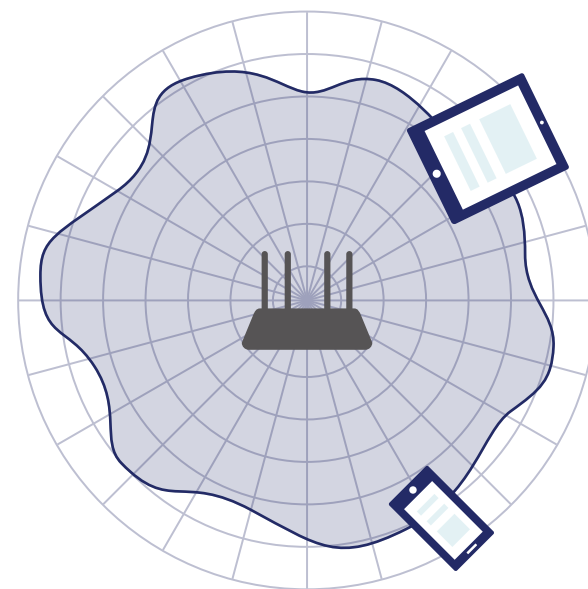
Highlights

Vast Wi-Fi Coverage

Four external omni-directional antennas create strong, clear, dependable Wi-Fi throughout your home. Beamforming detects the location of your connected devices and concentrates the Archer C80's signal towards them to optimize wireless connections.†



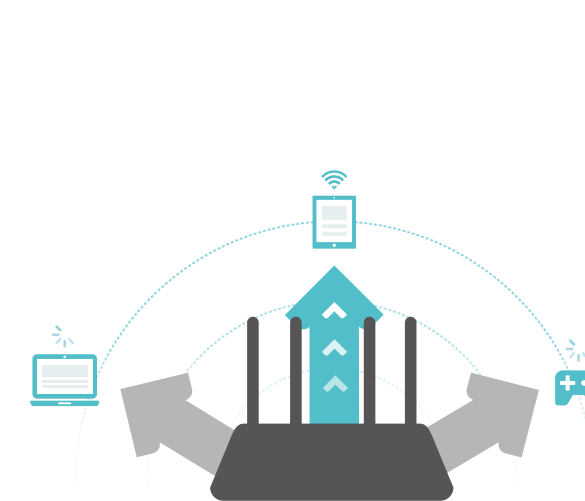
Archer C80



Regular Router

MU-MIMO

MU-MIMO technology serves multiple devices at once, reducing wait time, increasing Wi-Fi throughput for every device, and making each stream more efficient.‡



Traditional Router

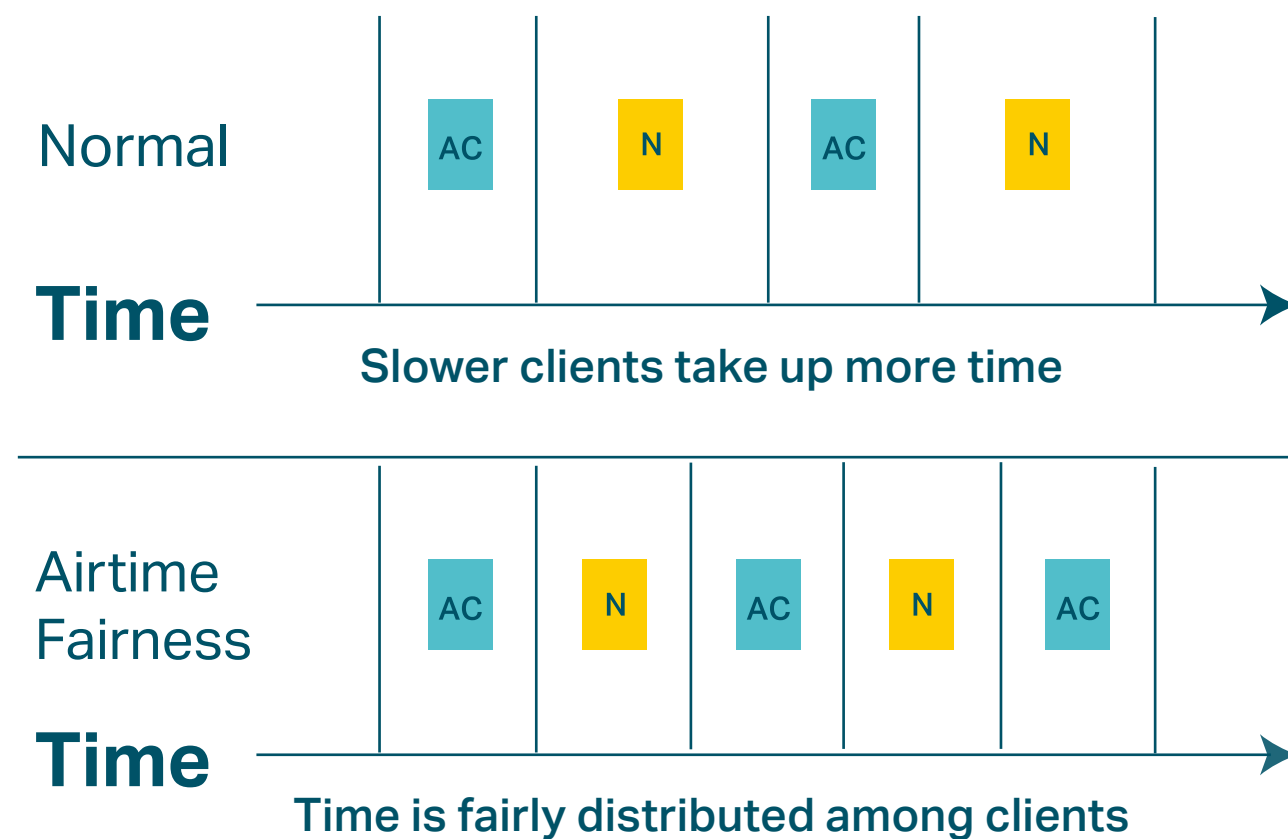


MU-MIMO Router

Highlights

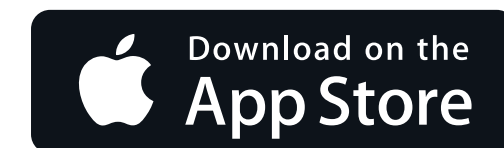
Airtime Fairness

Equally divides network time between new devices, such as your gaming rig and older devices to improve your overall Wi-Fi performance and reliability.



Easy Setup and Use

Installation is simple, thanks to an intuitive web interface and the powerful TP-Link app, Tether. Tether lets you manage your network settings with your smartphone.

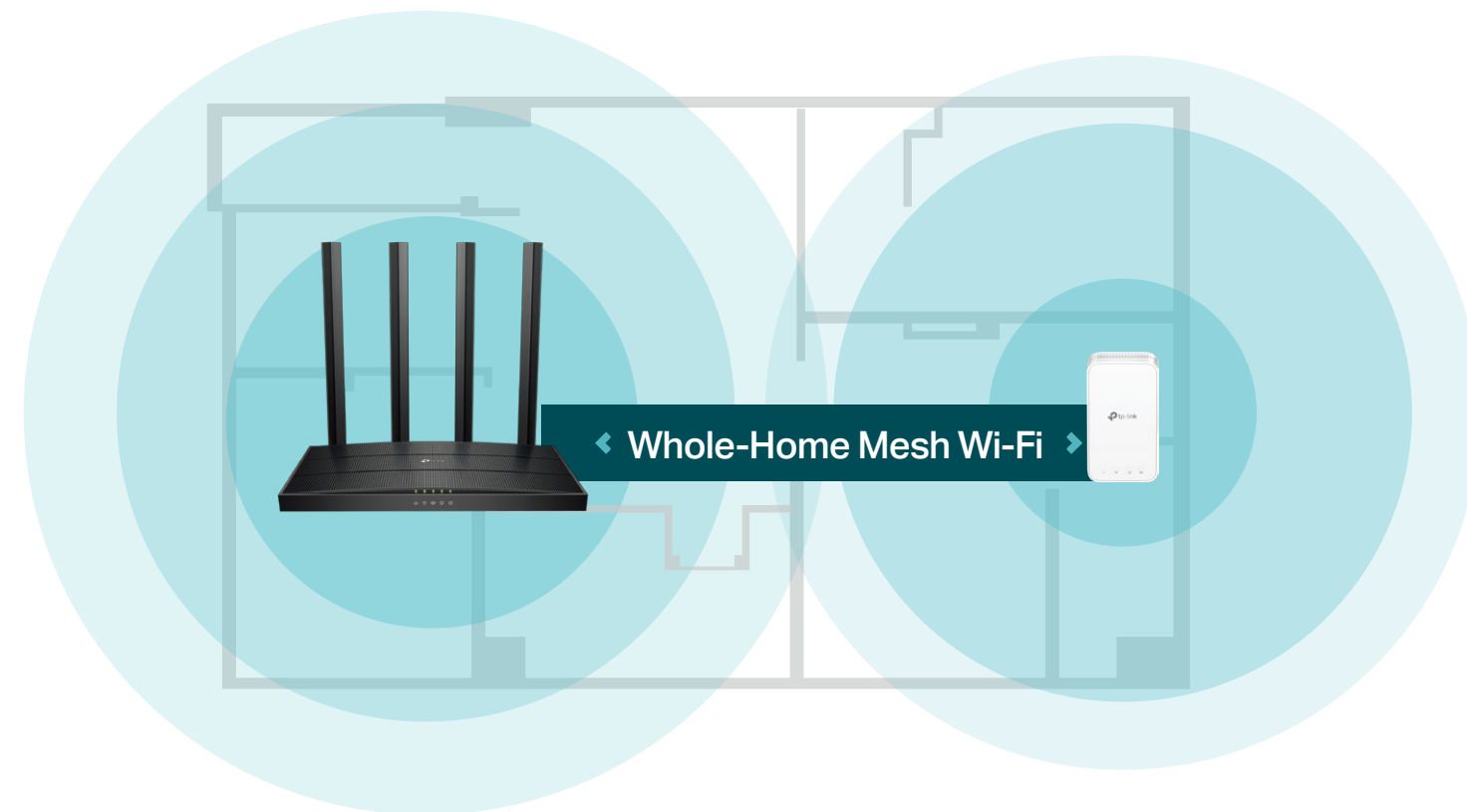


Scan the QR code to download TP-Link Tether.

Highlights

Flexible Whole-Home Wi-Fi

Archer C80 supports OneMesh™ to form seamless whole-home coverage, preventing drops and lag when moving between signals.



*OneMesh™ Supported:

Without replacing your existing devices or buying a whole new WiFi ecosystem, OneMesh™ helps you create a more flexible network that covers your entire home with TP-Link OneMesh™ products.

Learn More: <https://www.tp-link.com/onemesh/>

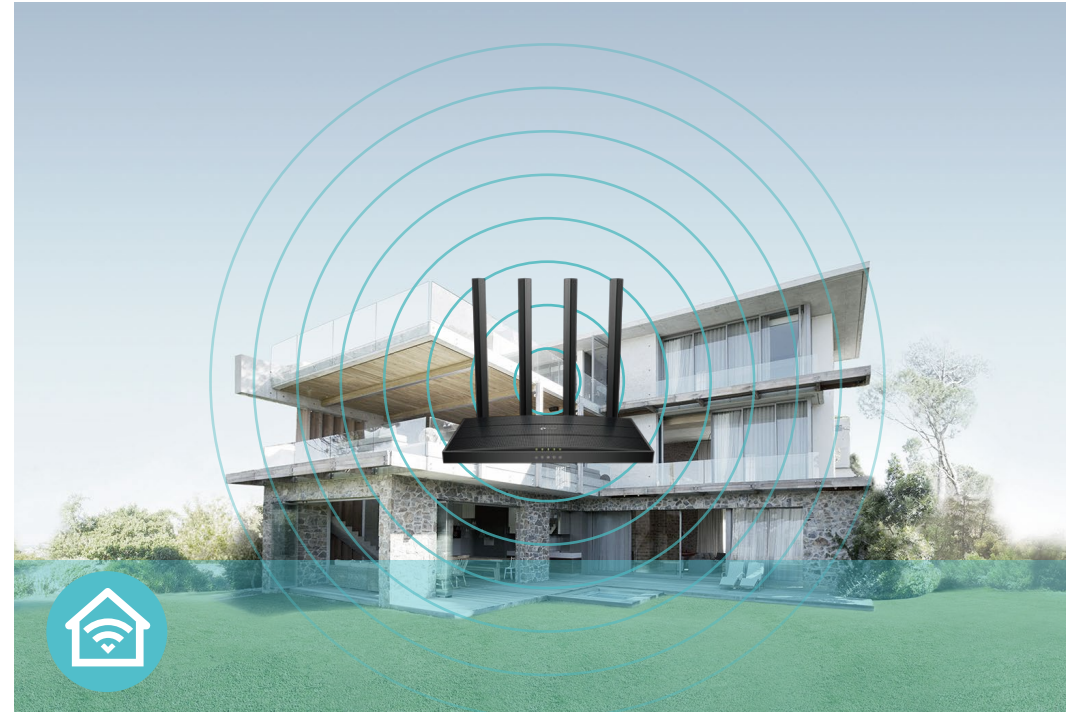
All OneMesh Products: <https://www.tp-link.com/onemesh/product-list/>

Features



Speed

- **802.11ac Technology** – Powered by 802.11ac Wi-Fi technology, Archer C80 creates a reliable, blazing-fast network.
- **Ultimate Wireless Speed** – 1300 Mbps on 5 GHz + 600 Mbps on 2.4 GHz
- **Gigabit Internet Access** – Take full advantages of broadband speeds up to 1 Gbps



Wi-Fi Range

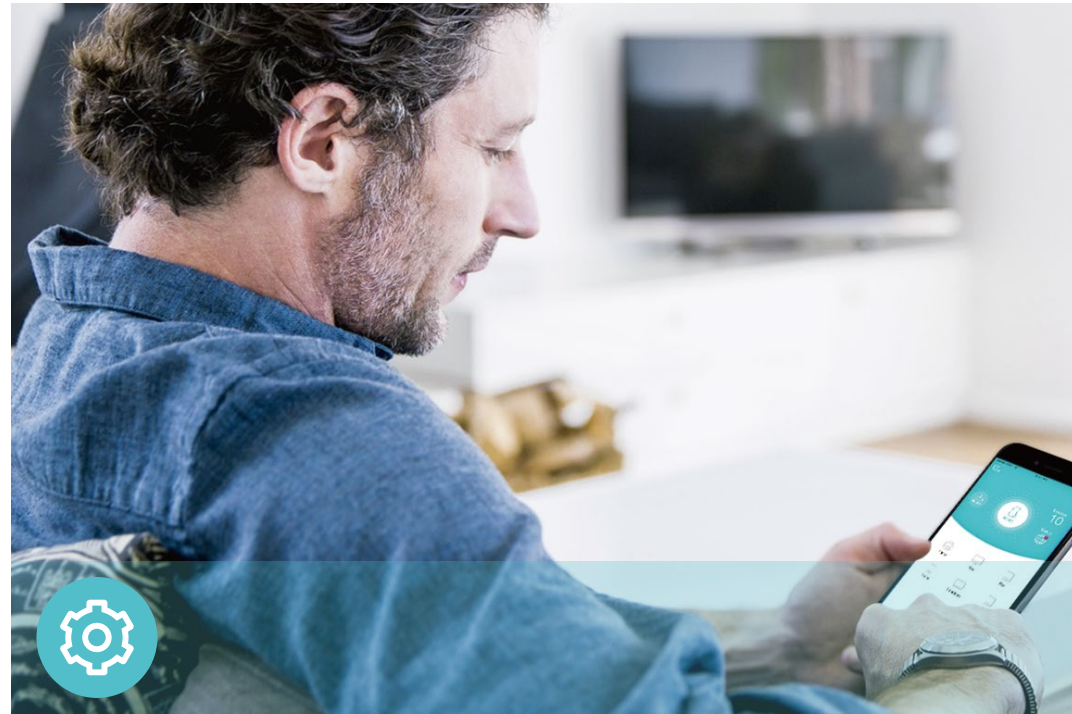
- **Ultimate Range Wi-Fi** – Four external antennas deliver a Wi-Fi signal to every corner of your home, making all of your connections more efficient and stable
- **Beamforming Technology** – Concentrates Wi-Fi signals towards individual devices to ensure stronger connections



Reliability

- **Airtime Fairness** – Balances airtime usage of connected devices to improve overall throughput and efficiency
- **Smart Connect** – Intelligently switches each device's connection to the optimum available Wi-Fi band
- **Vxworks System** – Utilizes the real-time Vxworks system, which has pre-assigned RAM strategy to provide more stable and high-responsive experience.

Features



Easy Management

- Intuitive Web UI – Ensures quick and simple Installation without hassle
- Hassle-free Management with Tether App – Network management is made easy with the TP-Link Tether App, available on any Android and iOS device
- TP-Link ID – Binds the router to your TP-Link ID and other family member's accounts to manage the router



Security

- Encryptions for Secure Network – WPA-PSK and WPA2-PSK encryptions provide active protection against security threats
- Guest Network – Keeps your main network secure by creating a separate network for friends and visitors
- Parental Controls – Restricts internet access time and contents for children devices



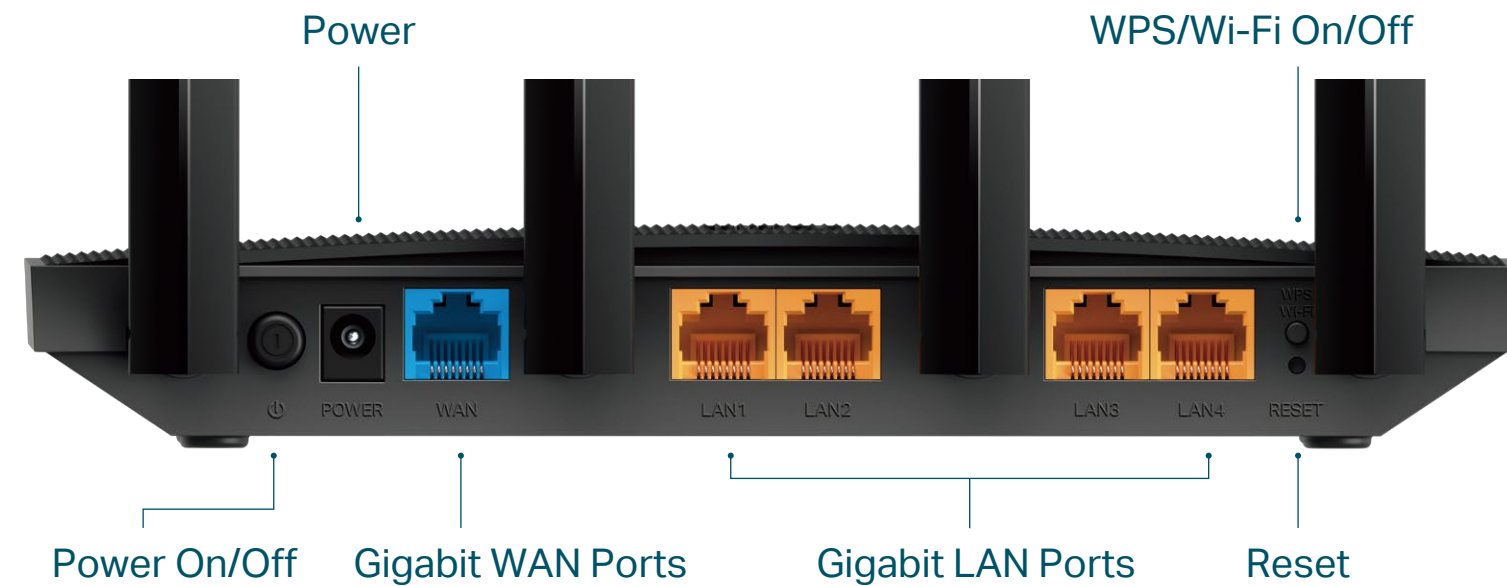
Ease of Use

- Wi-Fi Sharing – Easily shares your Wi-Fi access with a QR code
- Wi-Fi Schedule – The wireless network can be automatically off within a specified period when you do not need the wireless connection
- LED Control – Automatically turns your router's LEDs off within a specified period

Specifications

Hardware

- Ethernet Ports: 1× 10/100/1000 Mbps WAN Port, 4×10/100/1000 Mbps LAN Port
- Buttons: WPS/Wi-Fi Button, Power On/Off Button, Reset Button
- Antennas: 4 Fixed Omni Directional Antennas
- External Power Supply: US version 12V/1.5A
EU version 12V/1A
- Dimensions (W x D x H): 8.5 × 4.6 × 1.26 in (215 × 117 × 32mm)



Wireless

- Standards: IEEE 802.11 ac/n/a 5 GHz, IEEE 802.11 n/b/g 2.4 GHz
- Wireless: 1300 Mbps on 5 GHz + 600 Mbps on 2.4 GHz
- Frequency: 2.4 GHz and 5 GHz
- Transmit Power:
CE: <20dBm(2.4 GHz), <23dBm(5.15 GHz~5.25 GHz)
FCC:<30dBm(2.4 GHz & 5 GHz)
- Reception Sensitivity:
5 GHz:
11a 6Mbps:-98dBm, 11a 54Mbps:-78dBm
11ac VHT20_MCS0:-98dBm, 11ac VHT20_MCS8:-72dBm
11ac VHT40_MCS0:-92dBm, 11ac VHT40_MCS9:-68dBm
11ac VHT80_MCS0:-89dBm, 11ac VHT80_MCS9:-64dBm
2.4 GHz:
11g 6Mbps:-97dBm, 11a 54Mbps:-77dBm
11n VHT20_MCS0:-97dBm, 11n VHT20_MCS8:-72dBm
11n VHT40_MCS0:-92dBm, 11n VHT40_MCS9:-67dBm
- Wireless Function: Enable/Disable Wireless Radio, WMM
- Wireless Security: 64/128-bit WEP, WPA/WPA2, WPA-PSK/WPA2-PSK, WPA3-PSK encryptions

Specifications

Software

- Quality of Service: Device Prioritization
- WAN Type: Dynamic IP/Static IP/PPPoE(Dual Access)/PPTP(Dual Access)/L2TP(Dual Access)
- Management: Access Control, Local Management, Remote Management
- DHCP: Server, DHCP Client List, Address Reservation
- Port Forwarding: Port Forwarding, Port Triggering, UPnP, DMZ
- Dynamic DNS: DynDns, NO-IP, TP-Link
- Access Control: Local Management Control, White List, Black List
- Parental Controls: URL Filtering, Time Controls
- Firewall Security: SPI Firewall, IP and MAC Address Binding
- Protocols: IPv4, IPv6
- Guest Network: 2.4 GHz Guest Network, 5 GHz Guest Network

Others

- Certification:
CE, FCC, RoHS
- System Requirements:
Microsoft Windows 98SE/NT/2000/XP/Vista™/7/8/8.1/10, MAC OS, NetWare, UNIX or Linux
Internet Explorer 11, Firefox 12.0, Chrome 20.0, Safari 4.0, or other Java-enabled browser
Cable or DSL Modem
Subscription with an internet service provider (for internet access)
- Environment:
Operating Temperature: 0°C~40°C (32°F ~104°F)
Operating Humidity: 10%~90% non-condensing
Storage Humidity: 5%~90% non-condensing
- Package Contents
Wireless Router Archer C80
Power Adapter
RJ45 Ethernet Cable
Quick Installation Guide



For more information, please visit

https://www.tp-link.com/products/details/?model=Archer+C80_V1

or scan the QR code left

†Maximum wireless signal rates are the physical rates derived from IEEE Standard 802.11 specifications. Actual wireless data throughput and wireless coverage are not guaranteed and will vary as a result of network conditions, client limitations, and environmental factors, including building materials, obstacles, volume and density of traffic, and client location.

‡Use of MU-MIMO requires clients to also support MU-MIMO.

©2021 TP-Link