



# ExpertBook B5 Flip | B5402FVA



## Power to turn your business world

ExpertBook B5 Flip is built for business success in style, with a precision-crafted chassis that pushes the limits of lightness, plus a 360° flippable design and garaged stylus for ultimate flexibility. Powered by cutting-edge 13th Gen Intel® Core™ processors with vPro® support, fast-charging all-day battery and dual SSD storage, ExpertBook B5 Flip is the perfect portable, powerful partner for empowering workplace productivity.



13th Gen Intel® processor



Ultralight



All-day battery life



Dual SSD



US military grade



IR camera facial login

## Exceptional performance for business

- Up to 13th Gen Intel® Core™ i7 processor
- Up to 2 TB PCIe® 4.0 Performance SSD + 2 TB PCIe® 3.0 Performance SSD
- Up to 40GB DDR5 memory
- Fast-charging, all-day battery life up to 11 hours<sup>1</sup>

## Enterprise-grade durability and security

- Tested to US military grade MIL-STD-801H standards
- Full-size spill-resistant keyboard (backlit optional)
- Supports Intel vPro® Enterprise and vPro® Essential
- HD+IR\* camera, webcam shield, Nano Kensington lock slot, fingerprint sensor with power button, TPM 2.0\*, BIOS user password protection

## Ultimate portability for working anywhere

- Lightweight 14" starting from 1.39kg
- Full I/O ports including Thunderbolt™ 4 USB-C™, microSD card reader
- Wi-Fi 6E with ASUS WiFi Master, Bluetooth® 5
- ASUS two-way AI noise-canceling technology

## Premium design for intuitive user experience

- 360° convertible device with fast-charging MMP 2.0 garaged stylus\*
- 14" 16:9 FHD anti-glare touchscreen display
- ASUS ExpertWidget
- ASUS exclusive NumberPad\*
- MyASUS, ASUS Business Manager, ASUS Control Center\*

\*SPECIFICATIONS ARE OPTIONAL AND MAY VARY BY MODEL OR REGION.

<sup>1</sup>ACTUAL BATTERY LIFE MAY VARY DEPENDING ON PRODUCT CONFIGURATION, USAGE, OPERATIONAL CONDITIONS AND POWER MANAGEMENT SETTINGS. BATTERY LIFE WILL DECREASE OVER THE LIFETIME OF THE BATTERY.

## Warranty and Support



3-year global warranty  
100% free of charge, with no hidden costs.



Pick up & return service  
Enjoy a door-to-door service including pick up, repair, and return.



MyASUS  
Contact customer service, view repair status, read product guides and more.

# SPECIFICATIONS

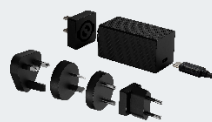
Model	B5402FVA
Operating System	Windows 11 Pro/Windows 11 Home/Windows 11 pure OS/ Windows 11 Enterprise LTSC
Processor	Intel® Core™ i7-1370P (24MB cache, up to 1.9 GHz, 14 cores) (vPro® Enterprise) Intel® Core™ i5-1350P (12MB cache, up to 1.90 GHz, 12 cores) (vPro® Enterprise) Intel® Core™ i7-1360P (18MB cache, up to 2.2 GHz, 12 cores) (vPro® Essential) Intel® Core™ i5-1340P (12MB cache, up to 1.90 GHz, 12 cores) (vPro® Essential) Intel® Core™ i7-1360P (18MB cache, up to 2.2 GHz, 12 cores) Intel® Core™ i5-1340P (12MB cache, up to 1.90 GHz, 12 cores)
Graphics	Intel® Iris®Xe graphics Intel® UHD graphics
Storage	Up to 2 TB PCIe® 4.0 Performance SSD + 2 TB PCIe® 3.0 Performance SSD 256GB/512GB/1TB PCIe 4.0/3.0 SSD 512GB/1TB/2TB PCIe 4.0/3.0 Performance SSD
Memory	1x onboard + 1x customer accessible/upgradeable SO-DIMM up to DDR5 4800MHz Onboard: 8GB DDR5 SO-DIMM: 8GB/16GB/32GB DDR5
Display	14", 16:9, FHD (1920x1080), Anti-glare, IPS, Flat, 400nits, sRGB 100%, DPST, 60Hz, Touch 14", 16:9, FHD (1920x1080), Anti-glare, IPS, Flat, 400nits, sRGB 100%, DPST+ PSR2, 60Hz (1W), Touch
I/O Ports	2 x Thunderbolt™4 Type-C (supports 4K display, USB PD3.0) 1 x USB3.2 Gen2 Type-A 1 x USB3.2 Gen1 Type-A 1 x HDMI 2.1(TMDS) 1 x microSD card reader 1 x 3.5 mm combo audio jack 1 x RJ45 1 x Kensington Nano lock slot
Camera	HD+IR with webcam shield, supports Windows Hello FHD with webcam shield
Wireless	Wi-Fi 6E (802.11ax) (Dual band) 2*2 + Bluetooth® 5.3 Wireless Card
Audio	2 x speakers Integrated digital microphone *2 on the CMOS module ASUS two-way AI Noise-Canceling Technology Cortana voice-recognition/Dolby Atmos/Wake on Voice (ISST)/Intel smart sound technology
Weight	Starting at 1.39kg
Dimensions (WxDxH)	32.34 x 22.31 x 1.79 cm
Battery	63Whr, 3-cell, Li-polymer
Security	IR camera (optional), TPM 2.0 (optional), fingerprint sensor with power button, webcam shield, Kensington nano lock slot, BIOS user password protection
Keyboard	Full-size, 1.5 mm key travel, spill-resistant, backlit optional
NumberPad	Optional
Manageability	MyASUS, ASUS Business Manager, ASUS Control Center (optional)
AC Adapter	USB Type-C®, 65 W; Output: 20 V DC, 3.25 A; Input: 100~240 V AC 50/60 Hz universal
Certificates	EPEAT Gold, Energy Star 8.0, TCO 9.0, FSC Mix

DISCLAIMER: SPECIFICATIONS VARY BETWEEN DIFFERENT REGIONS. SERVICE AND WARRANTY COVERAGE DEPEND ON COUNTRY AND TERRITORY AND MAY NOT BE AVAILABLE IN ALL MARKETS.

## Recommended Accessories



ASUS SimPro Dock 2



65W USB-C Ultra Mini Universal Adapter