

The smart way to label

Professional label printing
from your phone or PC.

brother.co.uk/cubeplus





Organise your office and equipment



The compact label printer for both office and home users





Design and print labels straight from your smartphone

Free Design&Print 2 app for Apple and Android devices

Create your label design in our free P-touch Design&Print 2 app. Choose from the many pre-made labels or create your own. Select your favourite font, add emojis and clip art, you can even add a frame around your text.

The convenience of Bluetooth

The P-touch CUBE Plus is the smart label printer for the modern office. Connect directly to your smartphone by simply selecting the printer from your Bluetooth devices. Then launch the app and get labelling. So quick, and so easy!

Sharing made easier

Share instructional information or important links with colleagues or customers. Print a personal QR code label to stick onto their equipment or mail items. When they scan the QR code on their phone, it will automatically open the link to a video, website or a DropBox folder you have set up.



The future of labelling is right at your fingertips



Recharge from USB. Always ready to print

Most label printers use a lot of power, needing frequent battery replacement. As well as the expense, there is also the environmental impact. The P-touch CUBE Plus is different. Its powerful Li-ion battery recharges from your computer, or an AC to USB plug adaptor.

Design your labels whenever convenient

As the P-touch CUBE Plus has a Li-ion rechargeable battery it makes it truly portable, meaning you can create and print labels wherever you need them. Whether you need labels at your desk, in a meeting room or even at home, all you need is your smartphone and label printer. Plus, Brother's TZe tapes are ideal for both indoor and outdoor use.

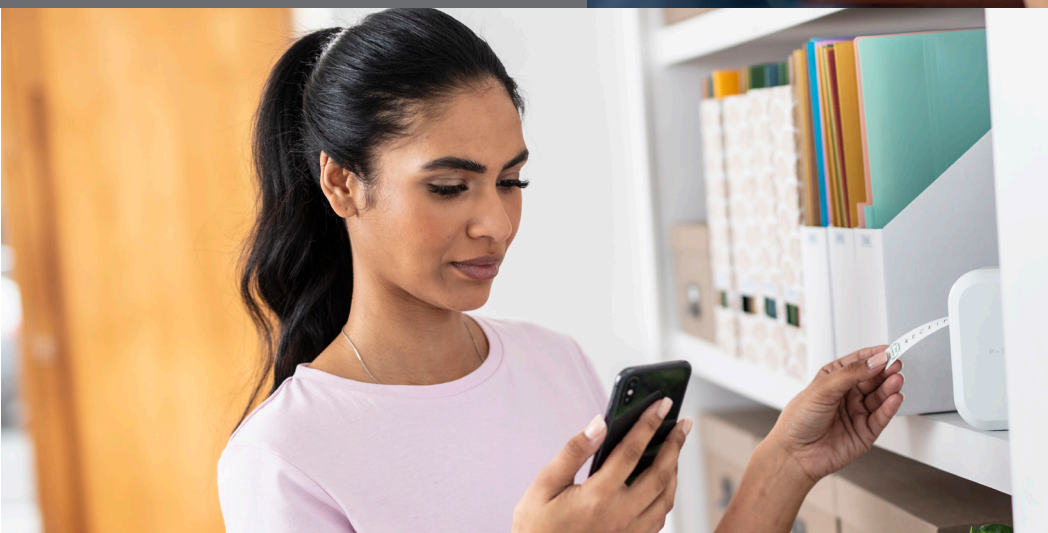
More design options from your PC or Mac

If you prefer, the P-touch CUBE Plus label printer can connect to your computer via USB. Using the free P-touch Editor label design software, you can include many objects on your label, exactly where needed. Barcodes, logos, images, frames and many other objects can be added.

Over 100 different label and ribbon tapes available

Choose from the many stylish, colourful labels and ribbons (up to 24mm wide). Durable labels are available in bright yellow, white and transparent or even sparkling gold or gold and silver glitter. We also have fabric ribbons or practical iron-on labels for school clothing - there is a tape available for all uses!

Unleash your creativity with our labels and ribbons



Laminated labels

Available in many colours and widths, with a durable overcoat that makes them resistant to:

- Water
- Heat
- Chemicals
- Abrasion
- Freezing
- Sunlight



Premium glitter labels

Great for gifts, events and wedding presents - offering a stylish and luxurious finish.

- Choose from black on glitter gold, or white on glitter silver
- Laminated, so extremely durable in day-to-day use



Patterned labels

Ideal for standout labels, these are available in four different patterns:

- Black text on pink hearts
- Black text on gold geometric
- Black text on silver lace
- Black text on red gingham



Matt labels

Special matt laminated surface reduces glare

- Easier to read in bright conditions
- Available in silver, transparent, lime green, berry pink and grey



Satin ribbons

Add that special touch to your presents and gifts to friends and family

- Available in several colours including navy blue, wine red, pink and white
- Has a silky, satin finish with a premium look



Iron-on fabric labels

Perfect for school uniforms, sports kit and school children's clothing

- Blue on white label
- The special adhesive is activated when heated with a clothes iron



Specifications

Printer details

Model number	PT-P710BTH
--------------	------------

Printing / media

Printing technology	Thermal transfer printing using TZe tape cassettes
Print resolution	180dpi (standard) 180 x 360dpi (high resolution)
Maximum print speed	20mm per second
Label widths	3.5, 6, 9, 12, 18, 24mm
Maximum print width	18mm
Maximum label length	500mm
Cutter	Automatic full cutter

Connectivity

USB	Ver 2.0 (full speed)
Bluetooth	SPP(Serial Port Profile) Apple's MFi certified

Power

Battery	Integrated Li-ion rechargeable battery
Charging	External AC adaptor

Dimensions / weight

Dimensions	128mm (W) x 67mm (D) x 128 (H)
Weight	0.67kg

What's in the box

Contents include:	Printer (Model number: PT-P710BTH)
	24mm black on white laminated TZe tape (4 metres)
	Li-ion battery (integrated into the printer)
	Micro USB cable for data transfer and recharging battery
	Documentation

brother
at your side

Contact:

www.brother.co.uk

Brother UK Ltd
Shepley Street, Audenshaw,
Manchester, M34 5JD

Tel: +44(0)161 330 6531