

*phoenix*  
SAFE COMPANY LIMITED



**BS1930 SERIES  
BATTERY COMMANDER**

*Phoenix Safe Company where peace of mind is guaranteed*

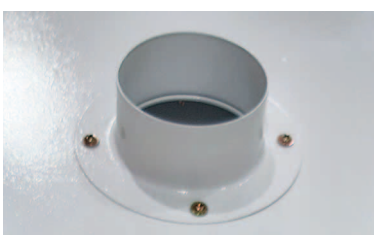


**The Battery Commander Series** has been designed for the protection of life and buildings from the devastating effects of lithium battery fires. They offer a safety storage and charging solution for large volume of lithium-ion batteries.

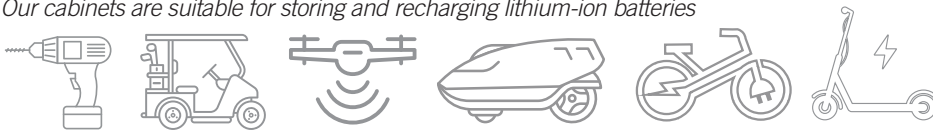
Lithium-ion batteries present many risks including 'thermal runaway' caused by a rise in temperature, a shock or faulty manufacture. This can result in the battery igniting and causing a fire that can be extremely difficult to extinguish.

#### AS STANDARD THE BATTERY COMMANDER COMES WITH:-

- **FIRE PROTECTION** – Tested to EN14470-1 (part 1) for 90 minutes.
- **DROP TEST** – Fire and impact tested from 9.1 metres for resistance to the impact of falling through the burning floors of a building.
- **VENTILATION** – Fitted as standard with Air ventilation ducts, these ducts are heat protected by a thermal fuse that triggers at 75 Degrees C. This seals the unit in the event of an internal battery fire or external building fire. For added ventilation, an external extraction fan can be connected to the top exit vent duct, for forced extraction, this is highly recommended to prevent the build up of heat whilst charging.
- **INTERNAL TEMPERATURE MONITOR** – For safety the cabinet comes as standard with an external temperature display, this gives an accurate internal temperature reading and early warning of a potential issue with a battery over heating.
- **AUTOMATIC DOORS** – Each door is fitted with auto closing and auto locking function so the safe is always securely closed and sealed in the event of a fire.
- **LOCK OPTIONS** – **BS1930K** – Fitted with a high quality key lock supplied with two keys. **BS1930E** – Fitted with an advanced high security electronic lock with clear LED display, dual control, hidden code & scrambled code that can be programmed as standard. The lock can further be upgraded to incorporate multiple user audit trail so that user's usage can be monitored. **BS1930F** – Fitted with an advanced high security touchscreen keypad & fingerprint lock with clear LED display, internal alarm, dual control, hidden code and scrambled code that can be programmed as standard with up to 128 fingerprints.



Our cabinets are suitable for storing and recharging lithium-ion batteries



BS1931E

BS1934E

BS1932K

- **MULTIPOINT LOCKING** – Fitted with an advanced multipoint locking system that securely seal the doors. Even in the event of the most severe battery explosion, the doors will remain securely closed.
- **CONSTRUCTION** – Double wall construction with internal fill of our patented Styronite F insulation provide a cabinet of great strength and fire/heat resistance.
- **POWER POINTS** – Fitted as standard with 1 x surge protected 8 gang power block, option to add a further 3 power blocks to the pre-wired control boxes.
- **SHELVING** – Supplied with Heavy duty perforated height adjustable shelves capable of carrying 100kg at a time. Fitted with an internal base sump as standard.
- **EARTH LINK** – fitted and ready to connect to a suitable earth point.
- **WIRING** – Pre-wired for alarm and up to 4 x 8 gang power blocks.
- **PLINTH** – Fitted with a plinth to allow easy movability and removal from the building in the event of a fire situation. The plinth is supplied with a front cover to provide a neat exterior finish.
- **WARNING LABELS** – Fitted with warning labels to in accordance with ISO 3864 and ISO 7010, as well as the European directive 92/58/EEC.

MODEL NUMBER	EXTERNAL DIMENSIONS H x W x D	INTERNAL DIMENSIONS H x W x D	DOOR SWING / HANDLE DEPTH	UNPACKED WEIGHT	CAPACITY	SHELVES/ DOORS
BS1931K/E/F	1160x690x650mm	980x510x440mm	650mm/40mm	260kg	220 Litres	2/1
BS1932K/E/F	1685x690x650mm	1505x510x440mm	470mm/40mm	340kg	338 Litres	3/1
BS1934K/E/F	1685x1125x650mm	1505x945x440mm	560mm/40mm	554kg	626 Litres	3/2



BS1930K



BS1930E



BS1930F

## OPTIONAL FEATURES



Alarm



Smoke detector



Fire extinguisher



Controller



External heat and alarm monitoring



*Phoenix Safe Company where peace of mind is guaranteed*

# phoenix

SAFE COMPANY LIMITED

## Concern over huge rise in fires caused by e-bike and e-scooter batteries

The rise in fires caused by batteries from e-bikes and e-scooters has caused alarm for firefighters across the country – Chris Choi reports.



## Cause of Aintree Hospital blaze identified after 12 hour battle

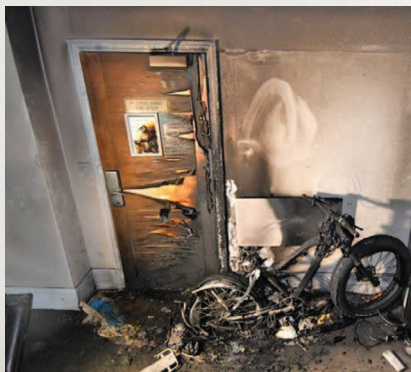
Merseyside Fire and Rescue Service (MFRS) were made aware of a fire at



the hospital at 4.34am on Wednesday, August 10. Six fire engines arrived at the scene just six minutes later and found a plant building on the roof of the critical care department, and next to Accident & Emergency, was on fire.

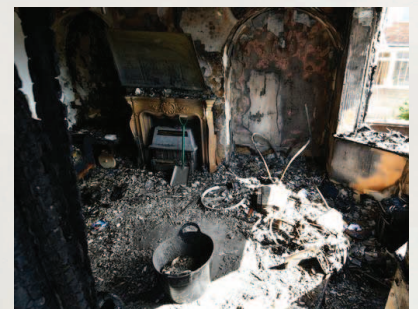
## Family 'lucky to escape' after electric bike fire destroys home

The family home has been completely ravaged by the fire that ripped through their home.



## E-bike batteries are causing 'incredibly serious' blazes, warns fire brigade

After attending to a fire at a Shepherd's Bush tower block caused by an e-bike battery failing, London Fire Brigade



(LFB) have warned of the dangers posed by the electrical units.

**UNITED KINGDOM**  
APEX HOUSE 1 ORRELL MOUNT,  
LIVERPOOL, L20 6NS  
+44 (0)151 944 6444  
info@phoenixsafe.co.uk

**GERMANY**  
PHOENIX SAFE DEUTSCHLAND GmbH  
BAHNSTR. 23, D-42327 WUPPERTAL  
+49-(0) 202 / 69519 -0  
info@phoenixsafe.de

