

PRODUCT SHORT DESCRIPTION:

Popular range of aluminium framed felt notice boards

FEATURES AND BENEFITS:

- Smooth felt surface available in a choice of six colours: Black, Grey, Blue, Red, Burgundy and Green
- Perfect setting for enhancing your communication
- Classic anodized aluminium frame
- Concealed wall fixings through plastic corners
- Wall fastening kit included
- Fire retardant version available

PRODUCT IMAGE:



MARKETING COPY:

Simple and straightforward, the products in this line are the most versatile notice boards in the market. Sober and well-designed, they come in a wide range of solutions and combinations. Maya Series Notice Boards are extremely adaptable, durable and efficient. Our combination boards can be used as notice or presentation boards with equal efficiency.

APPLICATION AND SALES PROPOSITION:

- Good value for money
- Enhanced presentation in a simple and easy way

TARGET MARKET:

CHANNEL: Office products wholesalers, office products stores, other retailers and building contractors
 END USERS: conference centers, hotels, public buildings, public store buildings and private and public buildings in general

ADDITIONAL NOTES:

Other information supports: our official websites, Youtube®, Facebook®, catalogue and online catalogue, demo videos and more.

PROMOTIONAL TIPS:

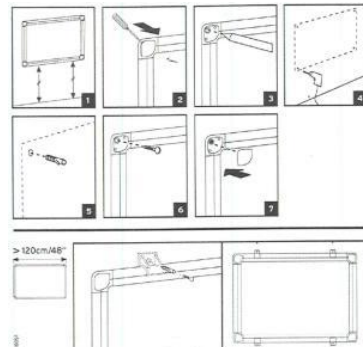
No specific timing, thus we recommend the occasional promotion like offering of accessories.

RANGING TABLE:

Frame/Colour:	Surface/Colour:	Product Size:	Packed mm	N.W. kg	G.W. kg	Reference:	RRP:
Grey Aluminium	Blue Felt	1200x900	1330x920x25	3,86	5,37	KF01077	-

TECHNICAL DETAILS**COMPOSITION:**

- Aluminium frame
- Felt surface
- Wooden Base core
- 2 year warranty

ASSEMBLY OVERVIEW:**CERTIFICATION AND LEGISLATION:**

n/a

ILLUSTRATION:

n/a

SUGGESTED ADVERT:

Maya Felt Board - Essential Series

Popular range of aluminium framed felt notice boards

- Smooth felt surface available in a choice of six colours: Black, Grey, Blue, Red, Burgundy and Green
- Perfect setting for enhancing your communication
- Classic anodized aluminium frame
- Concealed wall fixings through plastic corners
- Wall fastening kit included
- Fire retardant version available

**WITHIN FAMILY:**

- Maya Cork Board
- Maya Combination Board
- Maya Combonet Board
- New Generation Cork Board
- New Generation Combonet Board

QR CODE:

Author: Ana Oliveira

Approval:

 Revision: 00
 Date: 20-04-2015