

PRODUCT SHORT DESCRIPTION:

Professional easel that can be used with a continuous roll of paper or a conventional flipchart pad that is certified to GS/TUV standards

FEATURES AND BENEFITS:

- Prime Series:
 - The maximum in stability, functionality and quality for the most demanding use
- Patented flip roll system
- Smooth curved contemporary design
- Extendable side arm included
- Spring assisted height adjustment (170-200cm)
- Stable steel construction
- Mounted on 5 locking castors
- 35m roll of bleed proof paper
- Max. height: 1950mm
- Board size: 1035x700mm
- ϕ 71

PRODUCT IMAGE:



MARKETING COPY:

This Bi-Office premium modern designed Roll Up mobile easel is one of the most versatile easel in the market as it allows a varied use of paper supports, from the roll of bleed proof paper to the placing of standard flipchart sheets of paper in the extendable arms. With a sturdy steel construction the Roll Up is the premium heavy duty tool for professionals.

APPLICATION AND SALES PROPOSITION:

- The maximum in stability, functionality and quality for the most demanding use
- Versatile modern and professional tool
- Uses a variety of paper based supports
- Sturdy durable steel construction

TARGET MARKET:

CHANNEL: Office products wholesalers, office products stores, decoration products wholesalers, decoration stores and other retailers

END USERS: conference centers, hotels, companies and organizations in general

ADDITIONAL NOTES:

Other information supports: our official websites, Youtube®, Facebook®, catalogue and online catalogue, demo videos and more.

PROMOTIONAL TIPS:

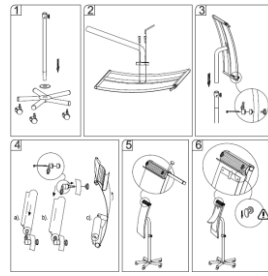
No specific timing, thus we recommend the occasional promotion like product and offering of accessories.

RANGING TABLE:

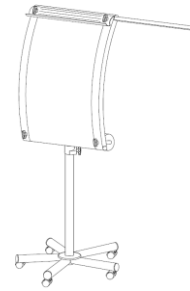
Frame/Colour:	Surface/Colour:	Product Size:	Packed mm	N.W. kg	G.W. kg	Reference:	RRP:
<i>PRIME SERIES</i>							
n/a	Silver steel	700x950x700	780x1145x155	21,05	23,05	EA4822016	---
n/a	White steel	700x950x700	780x1145x155	21,05	23,05	EA4822026	---

TECHNICAL DETAILS**COMPOSITION:**

- Steel construction
- Metal extendable arm
- Plastic locking castors
- 2 year warranty

ASSEMBLY OVERVIEW:**CERTIFICATION AND LEGISLATION:**

n/a

ILLUSTRATION:**SUGGESTED ADVERT:****Roll Up Mobile Easel - Prime Series**

Professional easel that can be used with a continuous roll of paper or a conventional flipchart pad that is certified to GS/TUV standards

- Prime Series:
 - The maximum in stability, functionality and quality for the most demanding use
- Patented flip roll system
- Smooth curved contemporary design
- Extendable side arm included
- Spring assisted height adjustment (170-200cm)
- Stable steel construction
- Mounted on 5 locking castors
- 35m roll of bleed proof paper



Included in the product

**WITHIN FAMILY:**

- n/a

QR CODE:

Author: Ana Oliveira

Approval: *Ana Oliveira*Revision: 00
Date: 11-06-2015