

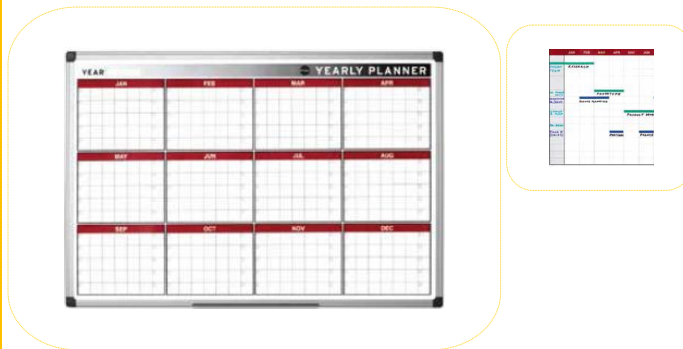
**PRODUCT SHORT DESCRIPTION:**

**Bi-Office Twelve Month Annual Planner**

**FEATURES AND BENEFITS:**

- Aluminium Frame, 900x600mm
- Displays all twelve months of the year, ideal for long term project planning, tracking holidays etc
- High quality drywipe magnetic surface
- Easy to write on and clean
- Supplied with marker pen, pen tray, magnets and wall mounting kit
- Available in five languages - English, German, Spanish, French and Portuguese

**PRODUCT IMAGE:**



**MARKETING COPY:**

Versatile and practical, our annual planner is ideal when used to coordinate long term project development or working teams throughout the year. With 16 rows available, you can organize monthly tasks or deadlines for that same number of workers or projects. When used with our Magnetic Planning Kit you can create specific areas and attributes for each slot and define priorities using color codes.

**APPLICATION AND SALES PROPOSITION:**

- Easy and simple tool to communicate and organize
- A good way to coordinate projects and organize tasks

**TARGET MARKET:**

CHANNEL: Office products wholesalers, office products stores, other retailers and building contractors

END USERS: conference centers, hotels, public buildings, public store buildings and private and public buildings in general

**ADDITIONAL NOTES:**

Other information supports: our official websites, Youtube®, Facebook®, catalogue and online catalogue, demo videos and more.

**PROMOTIONAL TIPS:**

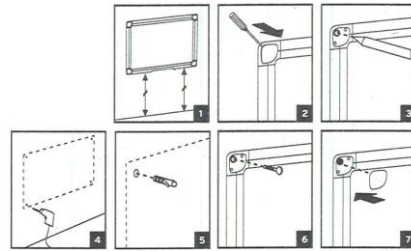
No specific timing, thus we recommend the occasional promotion like offering of accessories.

**RANGING TABLE:**

Frame/Colour:	Surface/Colour:	Product Size:	Packed mm	N.W. kg	G.W. kg	Reference:	RRP:
Grey Aluminium	Magnetic 12 month Planner	900x600	1030x620x25	2,80	3,80	GA0375170	---

**TECHNICAL DETAILS****COMPOSITION:**

- Aluminium frame
- Plastic corners with caps
- Wooden based core with magnetic surface
- Wall mounting kit

**CERTIFICATION AND LEGISLATION:**

n/a

**ILLUSTRATION:**

n/a

**SUGGESTED ADVERT:**

### Magnetic Twelve Month Annual Planner

#### Bi-Office Twelve Month Annual Planner

- Aluminium Frame, 900x600mm
- Displays all twelve months of the year, ideal for long term project planning,
- tracking holidays etc
- High quality drywipe magnetic surface
- Easy to write on and clean
- Supplied with marker pen, pen tray, magnets and wall mounting kit
- Available in five languages - English, German, Spanish, French and Portuguese

**WITHIN FAMILY:**

- Magnetic Annual Planner
- Monthly/Week Planner
- Four Month Planner
- Gridded Planner
- Perpetual Year Planner
- Year Planner
- Other planners also available

**QR CODE:**

Author: Mónica Lima

Approval: *Sandra Gomes Pereira*Revision: 00  
Date: 06-02-2014