

## Nescafe Gold Latte Instant Coffee Tin 1kg



**EAN**  
7613037039221

**Target market(s)**  
GB, IE

## Components

### Ingredients

Skimmed Milk Powder (47%)

Glucose Syrup

Coffee (12%) [Instant Coffee (11%), Roast and Ground Coffee]

Coconut Oil

### Lactose

Acidity Regulators (Sodium Bicarbonate, Citric Acid)

Salt

Natural Flavouring

### Nutrition

	Per 100g	Per 100ml**	Per mug**	% RI*
Energy	1620 kJ	96 kJ	232 kJ	
	385 kcal	23 kcal	55 kcal	3%
Fat	10.8g	0.8g	2.0g	3%
of which: saturates	9.1g	0.7g	1.7g	9%
Carbohydrate	50.8g	2.9g	7.0g	3%
of which: sugars	33.4g	1.6g	3.9g	4%
Fibre	4.2g	0.3g	0.8g	-
Protein	18.3g	0.8g	1.9g	4%
Salt	1.69g	0.10g	0.24g	4%

\*Reference Intake of an average adult (8400kJ/2000kcal)

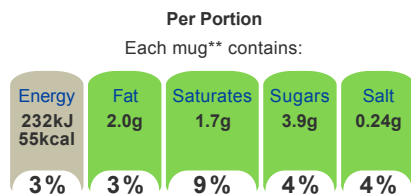
\*\*3 heaped teaspoons (15.5g) + 200ml water, makes 235ml; used as basis for per 100ml

Makes 64 mugs

### Calculated Nutrition

	per 100g	Per 100ml	Per mug
Energy (kJ)	1620	96	232
Energy (kcal)	385	23	55
Fat (g)	10.8	0.8	2
of which saturates (g)	9.1	0.7	1.7
Carbohydrate (g)	50.8	2.9	7
of which sugars (g)	33.4	1.6	3.9
Fibre (g)	4.2	0.3	0.8
Protein (g)	18.3	0.8	1.9
Salt (g)	1.69	0.1	0.24

### Front of Pack Nutrition



of an adult's Reference Intake\*

Energy per 100ml\*\*: 96kJ / 23kcal

\*Reference Intake of an average adult (8400kJ/2000kcal)

\*\*3 heaped teaspoons (15.5g) + 200ml water, makes 235ml; used as basis for per 100ml

## Product Description

### Alternative Description

Supplied Description - NESCAFÉ GOLD Latte Instant Coffee Tin 1kg

### Brand

Nescafe

### Features

A new recipe made only with the finest coffee beans and delicious, fresh milk  
Crafted using natural high quality coffee beans  
Coffee shop-style instant latte for your customers or employees  
Smooth and milky with a velvety froth in every cup  
Prepare delicious drinks in moments from our 1kg tins

### Standardised Brand

Brand - Nescafe

### Regulated Product Name

Instant Coffee Beverage

## Marketing

### Company Name

Nestlé UK & Ireland

### Company Address

PO Box 207,  
York,  
YO91 1XY,  
UK.

Nestlé Ireland,  
3030 Lake Drive,  
Citywest Business Campus,  
Dublin,  
D24 KX6Y.

### Product Marketing

This classic latte drink is crafted by experts and can be prepared in your business or workplace in moments, whenever you feel like taking a break. Enjoy an expertly crafted combination of flavour and aroma in every cup of this milky latte.

### Brand Marketing

It All Starts With a NESCAFÉ

NESCAFÉ is the world's favourite coffee brand, enjoyed in over 180 countries worldwide. With over 80 years of experience in selecting, roasting and blending the very best coffee, it's no surprise that over 5,500 cups of NESCAFÉ coffee are drunk every second!

The NESCAFÉ Plan

Great coffee starts at the source, which is why we've developed the NESCAFÉ Plan. We work with coffee farmers around the world, to support them in growing healthy, higher yielding crops and helping to protect the future of coffee farming for everyone. The result is high quality coffee that comes from sources you can trust.

Next time why not try our Unsweetend Cappucino? Also available in 40 sachet catering boxes.

### Further Description

Check out our YouTube Channel at [Youtube.com/user/UKNescafe](https://www.youtube.com/user/UKNescafe)  
Join us at [facebook.com/NescafeUK](https://www.facebook.com/NescafeUK)  
Follow us @nescafegolduki  
Visit [Nescafe.co.uk](https://www.nescafe.co.uk)

### Trademark Information

Nutritional Compass®  
® Reg. Trademark of Société des Produits Nestlé S.A.

### Nutritional Claims

Low Sugar

## Enhanced Marketing Data

### Enhanced Features

#FrothyCoffee

### Enhanced Product Marketing

Enjoy a classic coffee-shop style latte in your business...

Savour the taste of this classic coffee whenever you fancy it. Each NESCAFÉ GOLD Latte sachet is convenient and easy to prepare. Our recipe is crafted with high quality, carefully roasted coffee beans and fresh milk. The result is a delightful coffee shop-style drink that can be prepared and enjoyed for your customers and colleagues in moments.

Make your coffee break special with a beautifully crafted, easy-to-prepare drink. The expertise that goes into each latte sachet means that there is a delicious froth and milky taste in your finished coffee. We've created our latte using a combination of high quality ingredients. All you have to do is add hot water, stir, and enjoy the taste and aroma of this classic coffee shop favourite.

### Enhanced Brand Marketing

Each cup of NESCAFÉ GOLD coffee is made with high quality coffee beans. They have been expertly prepared, roasted and transformed into an instant coffee for you to enjoy at any time of the day. Our recipes are crafted to achieve a high quality taste, with beans that are carefully roasted to help bring out their flavour. We combine our instant coffee with quality ingredients for coffee shop-style moments every day. Just add hot water and stir to bring your delicious coffee to life whenever you want it.

### Enhanced Other Marketing

A tasty Latte with a delicious blend of coffee and skimmed milk powder in one single-serve sachet.

## Health & Lifestyle

### Lifestyle

- Suitable for Vegetarians

### Allergy Advice

Milk - Contains

### Additives

Artificial Flavours - Free From

## Storage & Usage

### Storage Type

#### Type

Ambient

### Preparation and Usage

1. Empty the contents of the sachet into your favourite mug.
2. Pour in 200ml of hot (85 C - not boiling) water and stir thoroughly.
3. Perfection takes time. Wait 20 secs and stir again.
4. For a creamier texture, gently tap your mug on the table. Now enjoy!

### Storage

Store in a cool, dry place

Best Before End: see base of can

## Brandbank Captured Pack Data

### Pack Size

1kg e

### Numeric Size

Numeric Size - 1

### Recycling Info

Can - Not Recyclable  
Lid - Recyclable

### Pack Type

Type - Can

### Recycling Scheme

- OPRL

### Usage Count

Number of uses - Servings

64

### Usage Other Text

Makes 64 mugs

## Customer Services

### Manufacturers Address

PO Box 207,  
York,  
YO91 1XY,  
UK.

Nestlé Ireland,  
3030 Lake Drive,  
Citywest Business Campus,  
Dublin,  
D24 KX6Y.

### Return To

Contact our professionals  
Tel. 0800 745 845 (UK) - 00800 6378 5385 (ROI)  
[www.NestleProfessional.co.uk](http://www.NestleProfessional.co.uk)  
PO Box 207,  
York,  
YO91 1XY,  
UK.

Nestlé Ireland,  
3030 Lake Drive,  
Citywest Business Campus,  
Dublin,  
D24 KX6Y.

### Telephone Helpline

0800 745 845 (UK)  
00800 6378 5385 (ROI)

### Web Address

[www.NestleProfessional.co.uk](http://www.NestleProfessional.co.uk)

## Extended Data

### Languages On Pack

- English

### Description Breakdown

Functional Name - Instant Coffee  
Variant - Latté



NUTRITION INFORMATION TYPICAL VALUES	Per 100g	Per 100ml**	Per mug**	% RI*
Energy	1620 kJ 385 kcal	96 kJ 23 kcal	232 kJ 55 kcal	3%
Fat	10.8g	0.8g	2.0g	3%
of which: saturates	9.1g	0.7g	1.7g	9%
Carbohydrate	50.8g	2.9g	7.0g	3%
of which: sugars	33.4g	1.6g	3.9g	4%
Fibre	4.2g	0.3g	0.8g	-
Protein	18.3g	0.8g	1.9g	4%
Salt	1.69g	0.10g	0.24g	4%

\*Reference Intake of an average adult (8400kJ/2000kcal)  
 \*\*3 heaped teaspoons (15.5g) + 200ml water, makes 235ml;  
 used as basis for per 100ml. Makes 64 mugs

### Instant Coffee Beverage

Ingredients: Skimmed Milk Powder<sup>®</sup> (47%), Glucose Syrup<sup>®</sup>, Coffee<sup>®</sup> (12%) [Instant Coffee (11%), Roast and Ground Coffee], Coconut Oil, Lactose<sup>®</sup>, Acidity regulators (Sodium Bicarbonate, Citric Acid), Salt<sup>®</sup>, Natural Flavouring<sup>®</sup>.

