

Cadbury Instant Hot Chocolate 2kg



EAN

5034660022237

Target market(s)

GB, IE

Components

Ingredients

Sugar
 Whey Powder (from Milk)
 Fat Reduced Cocoa Powder (13 %)
 Glucose Syrup
 Vegetable Fats (Coconut, Palm)
 Skimmed Milk Powder
 Milk Chocolate (4%) [Milk, Sugar, Cocoa Mass, Cocoa Butter, Vegetable Fats (Palm, Shea), Emulsifier (E442), Flavourings]
 Thickener (E466)
 Salt
Milk Protein
 Anti-Caking Agent (E551)
 Flavourings
 Acidity Regulator (Sodium Carbonate)
 Emulsifier (E471)
 Stabiliser (E339)

Nutrition

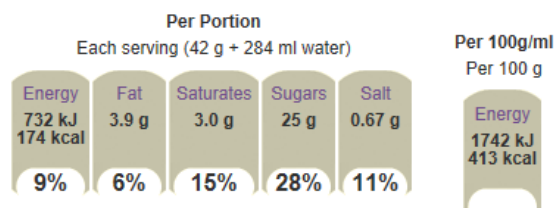
	Per 100 g	Per Serving	*Reference Intakes
Energy	1742 kJ 413 kcal	732 kJ 174 kcal	8400 kJ / 2000 kcal
Fat	9.3 g	3.9 g	70 g
of which Saturates	7.1 g	3.0 g	20 g
Carbohydrate	71 g	30 g	260 g
of which Sugars	61 g	25 g	90 g
Fibre	5.8 g	2.5 g	-
Protein	8.0 g	3.3 g	50 g
Salt	1.60 g	0.67 g	6 g

*% reference intake of an average adult (8400 kJ / 2000 kcal)

Calculated Nutrition

	per 100g	Per Serving
Energy (kJ)	1742	732
Energy (kcal)	413	174
Fat (g)	9.3	3.9
of which saturates (g)	7.1	3
Carbohydrate (g)	71	30
of which sugars (g)	61	25
Fibre (g)	5.8	2.5
Protein (g)	8	3.3
Salt (g)	1.6	0.67

Front of Pack Nutrition



% reference intake of an average adult (8400 kJ / 2000 kcal)

Product Description

Brand

Cadbury

Features

A more convenient version of your favourite Cadbury hot chocolate
Just add water for the smooth, creamy taste of Cadbury hot chocolate
Cadbury Instant Hot Chocolate is Fairtrade certified
Suitable for vegetarians

Standardised Brand

Brand - Cadbury

Regulated Product Name

Instant hot chocolate drink.

Marketing

Company Name

Mondelez UK / Mondelez Ireland

Company Address

Mondelez UK,
PO Box 7008,
Birmingham,
B30 2PT.

Mondelez Ireland,
Malahide Road,
Coolock,
Dublin 5.

Further Description

Cocoa Life
Partnering with Fairtrade Foundation
cocoalife.org

Health & Lifestyle

Lifestyle

- Suitable for Vegetarians

Allergy Advice

Milk - Contains

Storage & Usage

Storage Type

Type

Ambient

Preparation and Usage

Preparation Instructions
Designed to be a super-quick and easy way to get that great Cadbury taste, simply put 6 heaped teaspoons of Cadbury Hot Chocolate into a mug and stir in hot water.

Storage

Store in a dry place.
Protect from heat.
For best before see base.

Brandbank Captured Pack Data

Pack Size

2kg e

Numeric Size

Numeric Size - 2

Dimension

Shelf Height (mm)	Shelf Width (mm)	Shelf Depth (mm)
194	160	160

(GS1 package measurement rules)

Pack Type

Type - Tin

Weight

Gross Weight - 2232

New Product Development

Final Product - Not NPD

Unit Merchandising

Height - 194

Width - 160

Depth - 160

Unit Stackable - Yes

Unit Stable - Yes

Merchandise Multiple Ways - Yes

Shelf Ready Pack

Height - 201

Width - 320

Depth - 483

Weight - 12952

Unit Count - 6

Unit Height - 1

Unit Width - 2

Unit Depth - 3

Merchandise Multiple Ways - Yes

Prototype - No

Is Case - No

Case

GTIN - 05034660514459

Height - 201

Width - 320

Depth - 486

Weight - 12995

Unit Count - 6

Prototype - No

Usage Count

Number of uses - Servings

47-48

Usage Other Text

Per Serving (42 g + 284 ml water) - 47 to 48 servings per pack

Customer Services

Manufacturers Address

Mondelez UK,
PO Box 7008,
Birmingham,
B30 2PT.

Mondelez Ireland,
Malahide Road,
Coolock,
Dublin 5.

Return To

We are passionate about our great quality Cadbury products. Not completely satisfied? Please contact us:

Freephone 0800 818181 (UK only)

Mondelez UK,
PO Box 7008,
Birmingham,
B30 2PT.

Mondelez Ireland,
Freephone 1-800 678708

Malahide Road,
Coolock,
Dublin 5.
www.cadbury.co.uk

Telephone Helpline

0800 818181 (UK)
1-800 678708

Web Address

www.cadbury.co.uk

Extended Data

Languages On Pack

- English

